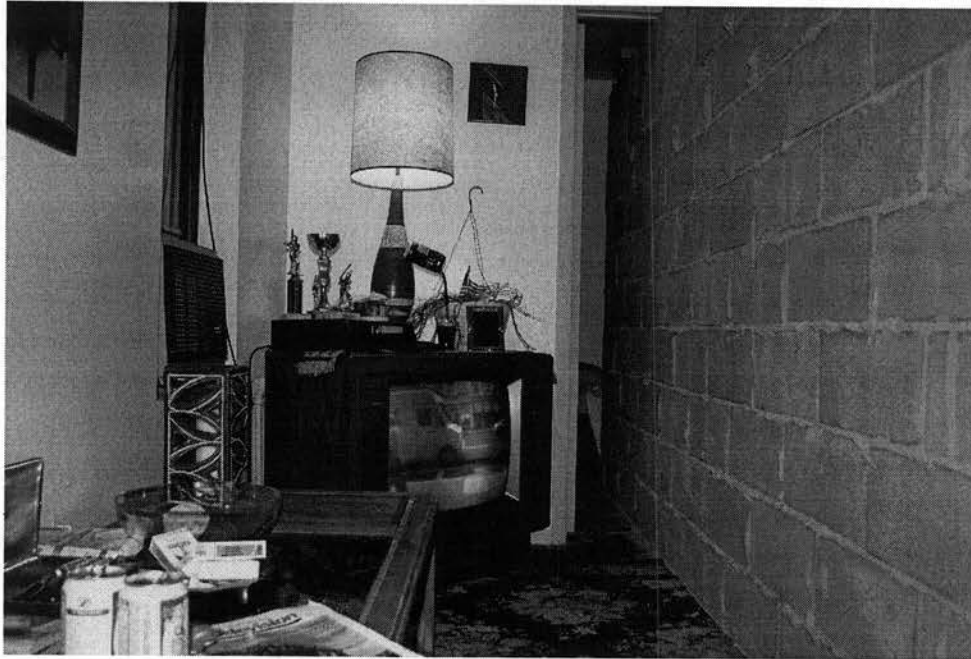


June 1 - August 7, 2004

CHRISTOPH BÜCHEL



Celebrated Swiss artist, Christoph Büchel worked at the S I during three weeks to create an installation that has transformed the S I space beyond recognition.

"What it all means is also hard to say. There is a visceral absurdity about the wall, and it is sad how it divides and isolates two people who, we may imagine, might otherwise productively commune and collaborate. Reading in an allegory about international relations (a comment, say, on Israeli-Palestinian relations) may or may not be warranted, but the thought does come to mind. You can also imagine a cinematic thriller about a single person divided into two disassociated personalities — one potentially violent. Ultimately, however, the main excitement of Mr. Büchel's ingenious construction is the Alice in Wonderland feeling of entering a mysteriously eccentric and possibly nonsensical parallel universe."

— Ken Johnson, The New York Times, July 30, 2004