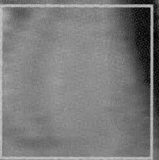
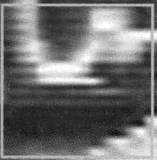
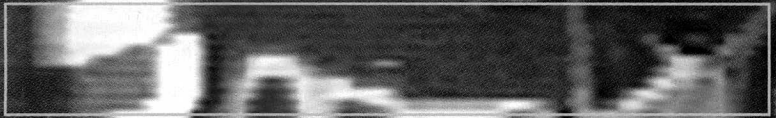
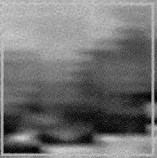
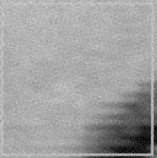
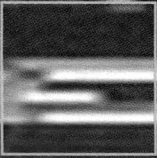


T e n a c i t y

Cultural Practices in the Age of Information and Biotechnology



T e n a c i t y

Cultural Practices in the Age of Information and Biotechnology

Exhibition March 24 - May 13, 2000

Participants

Ursula Biemann \ Zürich
Ricardo Dominguez \ New York
Marina Gržinić and Aina Smid \ Ljubljana, Slovenia
Natalie Jeremijenko and Bureau of Inverse Technology \ New York
Kristin Lucas \ New York
Diane Ludin \ New York
Jenny Marketou \ New York
Jennifer and Kevin McCoy \ New York
Francesca da Rimini and Michael Grimm \ Adelaide, Australia
®™ark \ New York
Cornelia Sollfrank \ Hamburg
and others

Curated \ Yvonne Volkart

Opening \ Friday March 24, 2000, 6-8 pm

Webcast performance "Involuntary Reception" by Kristin Lucas, 7 pm

Curator's and artists' tour \ Saturday March 25, 2000, 1 pm

S t u b b o r n P r a c t i c e s

In the Age of Information and Biotechnology

Conference: Saturday March 25, 2000

2 pm

Introduction: Yvonne Volkart, curator

Performance: **Mayan Technology for the People:**

A Zapatista haiku on the question of technology and the politics of intervention, by Ricardo Dominguez, co-founder of Electronic Disturbance Theater

3 pm

Ways and Weapons

Lecture by Tim Griffin, executive editor of ArtByte magazine

Statements by Ricardo Dominguez, Natalie Jeremijenko and Bureau of Inverse Technology, Jennifer and Kevin McCoy, Cornelia Sollfrank and ®™ark
open discussion

4 pm

Cyber snack

4:30 pm

Agents and Representations

Lecture by Toni Dove, electronic media artist

Statements by Ursula Biemann, Marina Gržinić, Kristin Lucas, Diane Ludin, and Jenny Marketou
Open discussion

SI/NY - Swiss Institute 495 Broadway 3rd fl. New York NY 10012-4457
p: 212.925 2035 f: 212.925 2040
e-mail: info@swissinstitute.net. www.swissinstitute.net
opening hours Tues - Sat 11am-6pm



This exhibition was made possible in part by Pro Helvetia, the Arts Council of Switzerland, Swissair and Kulturbehörde der Freien und Hansestadt Hamburg