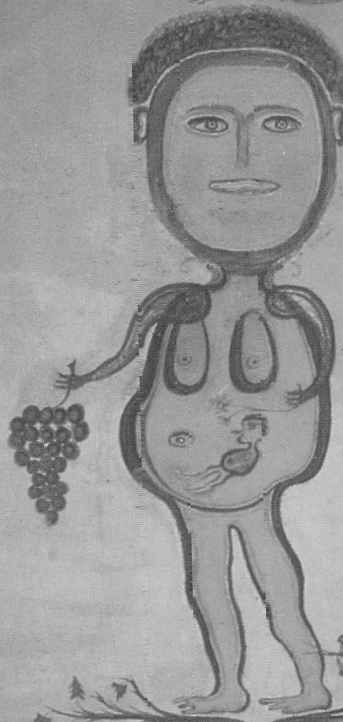


Her mine.





The Swiss Institute New York

The New Era Building  
495 Broadway  
New York, NY 100 12  
(212) 925-2035

## • **Heinrich Anton Müller (1869-1930)**

Machines, Drawings and Writings

Curated by Roman Kurzmeier

Exhibition: February 23 through April 1, 1995

Opening: Thursday, February 23, 6 to 8 pm

Gallery Talk with Roman Kurzmeier: Saturday, February 25, at 3 pm

Gallery Hours: Tuesday through Saturday, from 11 am to 6 pm

The exhibition has been organized by the Kunstmuseum Bern.  
It is supported, in part, by Pro Helvetia, the Arts Council of Switzerland.

*Hermine*, circa 1917, gouache and pencil on cardboard, Kunstmuseum Bern