

CORNELIA  
COTTIATI

---

*Swiss Institute New York*

CORNELIA  
**COTTIATI**

Works on Paper/Installations  
February 11 - March 21, 1992

---

*Swiss Institute New York*

## **ACKNOWLEDGEMENTS**

Discovering a new artist in the New York art scene is tantamount to charting unknown territory.

My encounter with Cornelia Cottiati inspired me to curate a show which marks a moment in this artist's evolution and witnesses the expansion of her subjectivity.

These rare moments justify and lighten the many less exalted chores which typify the curatorial function. I have enjoyed the preparation of this exhibit thanks to a lively collaboration with the artist and her colleague Sally McCullough. Cornelia Cottiati's total dedication to her art has communicated to everybody the enthusiasm which brings success to such a project.

**A.M.B.**

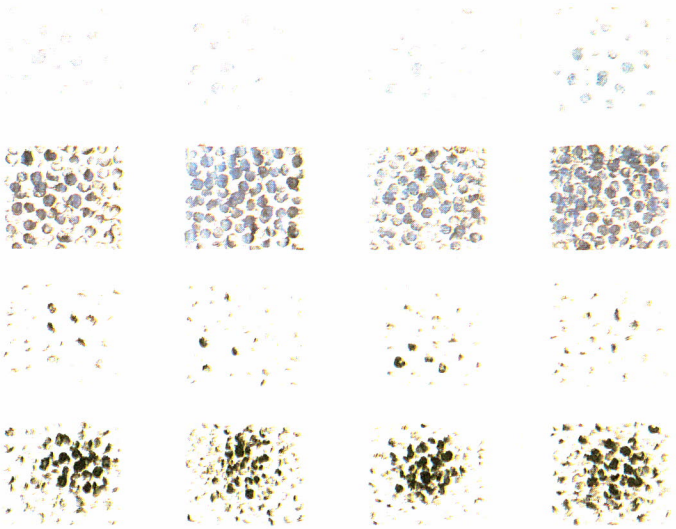


Figure 1  
*Q's / Om's*, 1991  
Ink and oil on paper  
Installation 41" x 53"  
16 pieces, 9" x 12" each

## **Cornelia Cottiati**

Cornelia Cottiati's work introduces us to the living dialectic of chaos and order inherent in nature. In the *Om's* series, translucent spherical forms eddy in sparse or dense clusters, evoking the division of cells and the passage of time, from life to death. Sometimes loose, sometimes frenetic, a magnetism animates their interaction.

From reminiscences of the Milky Way to suggestions of magnified microscopic particles, the *Orbs'* series intimates the basic structural unity of all forms of life. It manifests an unresolved oscillation between energy and matter.

Cottiati's work distinctly echoes a scientific presentation of the world: the *Meta* series, for instance, reminds us of X-ray prints or Rorschach tests. But beyond these scientific references, a subtle lyricism surfaces in the works. Soft, creamy, off-white textures; finely flecked spots; sensuous soot-like blacks; papers chosen for their porousness: all these elements converge to express a subdued musicality.

As a counterpoint to the fineness of the smaller series, the *Meta* series with its strong, repetitive, emotional statements, unveils the more spontaneous, but also the more tormented aspects of the artist's psyche.

Ariane M. Brillard

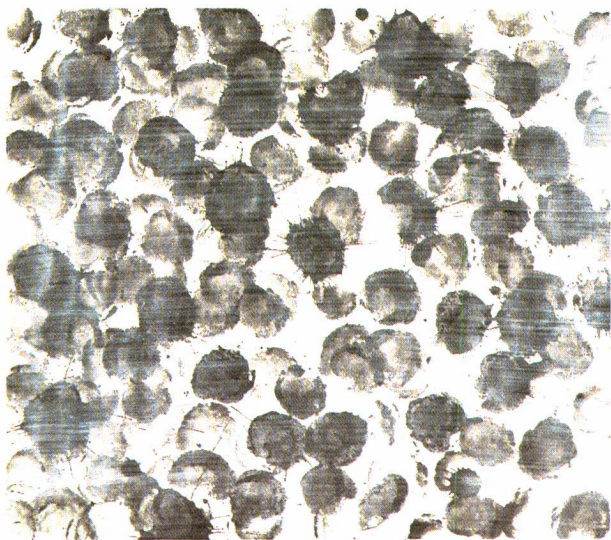
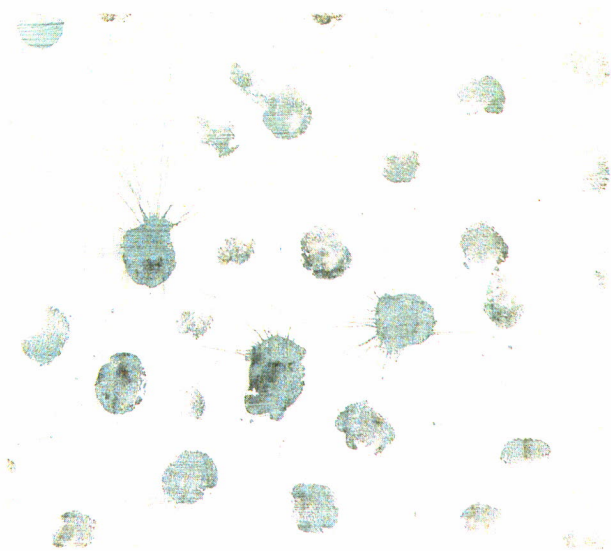


Figure 2

*Q's I #4 of 4*, 1991

Ink and oil on paper

9" x 12"

Detail from *Q's / Om's* Installation

Figure 3

*Q's II #3 of 4*, 1991

Ink and oil on paper

9" x 12"

Detail from *Q's / Om's* Installation

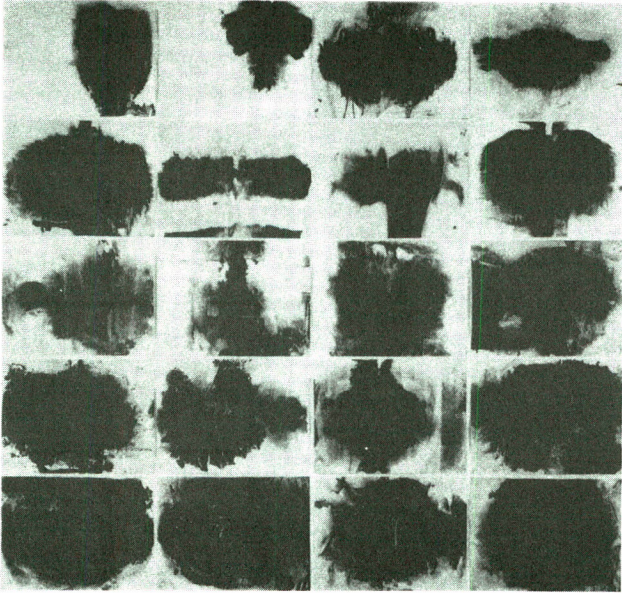


Figure 4  
*Meta I*, 1991  
Ink on paper  
Installation 92" x 98"  
20 pieces, 18" x 24" each



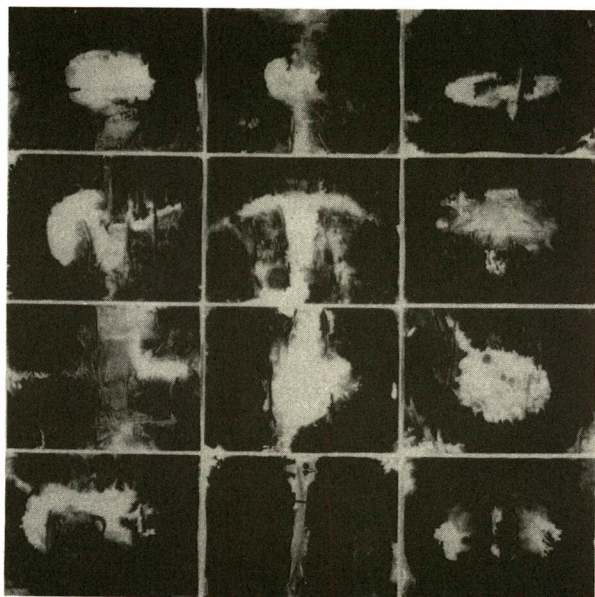


Figure 5  
*Meta II*, 1991  
Ink on paper  
Installation 74" x 73"  
12 pieces, 18" x 24" each

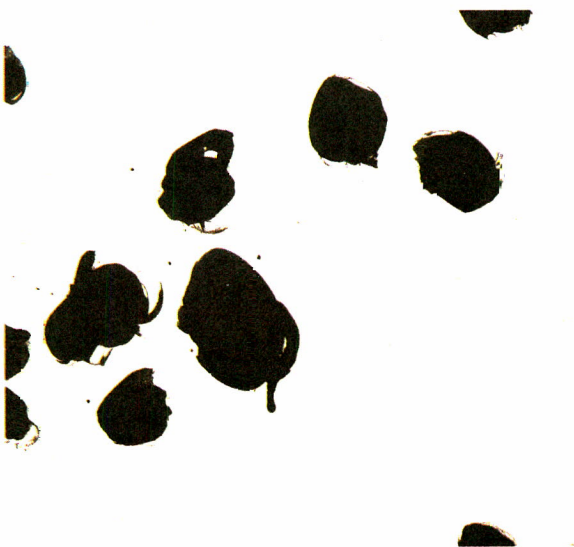
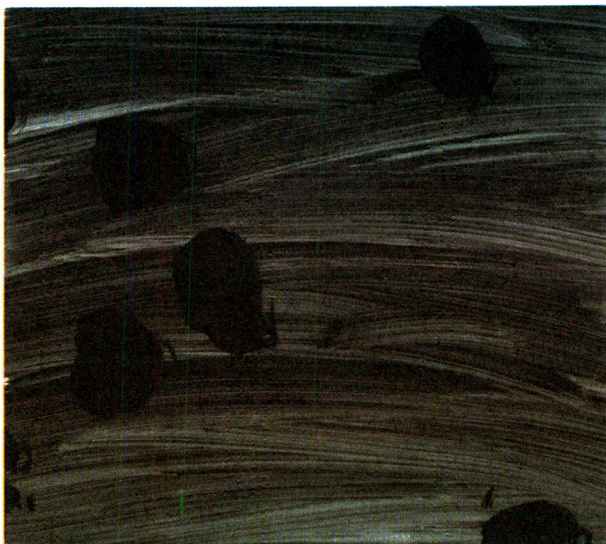


Figure 6  
*Kage II #3 of 6*, 1991  
Ink and oil on paper  
9" x 12"  
Detail from *Kage II* Installation

Figure 7  
*Kage I #2 of 6*, 1991  
Ink and oil on paper  
9" x 12"  
Detail from *Kage I* Installation

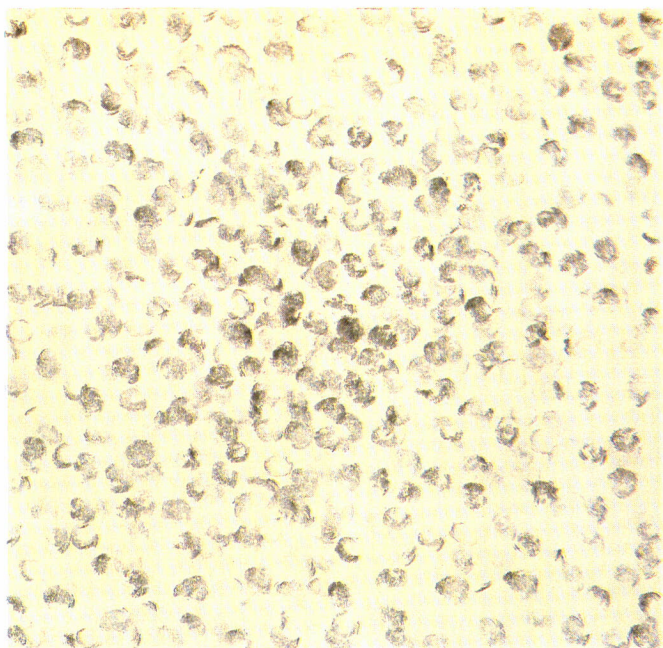
Figure 8

*Orb I, A4*, 1991

Ink and oil on paper

18" x 24"

Detail from *Orb I* Installation of 20 pieces 93" x 99"



## **CORNELIA COTTIATI**

Born 1959, Liestal, Switzerland

### **Selected Dual Exhibitions**

- 1992 *Altar/Alter Pieces*  
Fabienne Abrecht / Cornelia Cottiati  
Swiss Institute New York

### **Selected Group Exhibitions**

- 1988 *Soho Studio Artists 552*  
New York, NY
- 1986 Raum fuer Bewegung und Kunst  
Gelterkinden, Switzerland
- 1985 *Experimental Drawing*  
School of Fine Arts,  
Basel, Switzerland

### **Bibliography**

- 1992 Catalogue  
Cornelia Cottiati  
Swiss Institute New York

## WORKS IN THE EXHIBITION

*Q's / Om's*, 1991

Ink and oil on paper

Installation 41" x 53"

16 pieces, 9" x 12" each

Figures 1, 2 and 3

*Meta I*, 1991

Ink on paper

Installation 92" x 98"

20 pieces, 18" x 24" each

Figure 4

*Meta II*, 1991

Ink on paper

Installation 74" x 73"

12 pieces, 18" x 24" each

Figure 5

*Kage II #3 of 6*, 1991

Ink and oil on paper

9" x 12"

Figure 6

*Kage I #2 of 6*, 1991

Ink and oil on paper

9" x 12"

Figure 7

Swiss Institute New York  
35 West 67th Street  
New York, NY 10023  
Phone (212) 496-1759

Director  
Ariane M. Braillard

Administrative Coordinator  
Elisabeth Schuler

Public Relations  
Martin Radelfinger

Assistant  
Frances Nicosia

Sponsor  
PRO HELVETIA, Swiss Council for the Arts

Curator  
Ariane M. Braillard

Design  
Jan Hartley

Photography  
Ilonka Van Der Putten  
Gridley/Graves

Printing  
Alex Printing Co. Inc., New York  
Type face: text, Helvetica Light 10/12  
cover, Helvetica Condensed Light and Bold

Copyright 1991  
Swiss Institute New York



