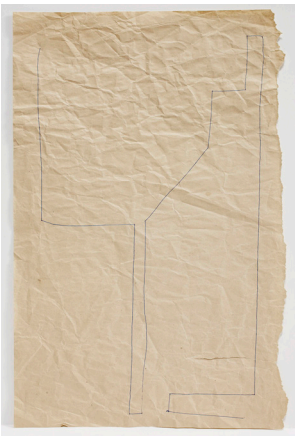
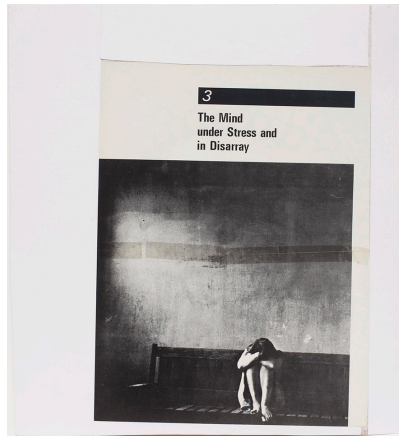


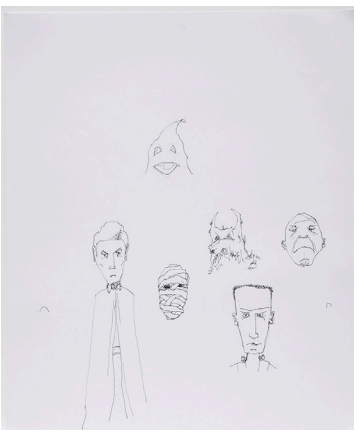
Richard Aldrich
The Words of Tuck Tuck Tuck



Inside Outside (Line Trilogy no.3)
2003
Pen on paper
15.25 x 9.75 inches (38.7 x 24.8 cm)



Grey City bw/ The Mind
under Stress and in Disarray
2001
Collage, pen, and tape
13 x 11.75 inches (33 x 29.8 cm)



Halloween Characters
2001
Pen on paper
17 x 14 inches (43.2 x 35.6 cm)



Bob Dylan/ Patty Waters
2003
Collage on paper
13 x 9.5 inches (33 x 24.1 cm)



Untitled
2003
Oil, wax, and oil bar, and oil pastel on panel
21.5 x 13 inches (54.6 x 33 cm)



Remnants from Stripe Painting (Line Trilogy no.2)
2004
Oil and wax and tape on paper
9 x 6 inches (22.9 x 15.2 cm)



Palermo Study (Line Trilogy no.1)
2004
Tape and matte medium on paper
15.25 x 12 inches (38.7 x 30.5 cm)



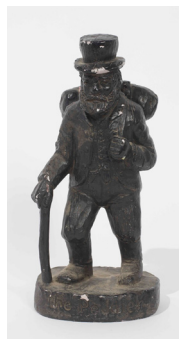
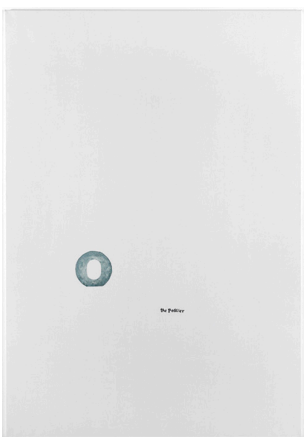
Reality Painting #5 (The Subway)
2012
Oil, wax, and charcoal on linen
84 x 58 inches (213.4 x 147.3 cm)



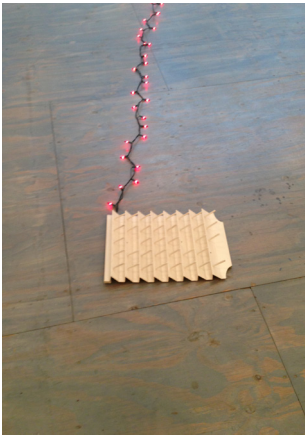
Untitled
2012 (1997/2000)
Polaroid and wood on linen
84 x 58 inches (213.4 x 147.3 cm)



U.F.O. With Mick Bolton
2002
Pen on paper
14 x 11 inches (35.6 x 27.9 cm)



O and The Peddler
2013 (2003/2006/2007)
Oil and wax on linen and
found objects
3 parts, dimensions variable



Untitled
2013
Found object and Christmas lights
Dimensions variable