

WRITER'S ROOM

Inga Meldere

June 20 – August 2, 2015

Organized by kim? Contemporary Art Centre

Venue: Janis Rozentāls and Rūdolfs Blaumanis Museum

Inga Meldere's pocket size exhibition, part of the project *Slash* and in collaboration with the Janis Rozentāls and Rūdolfs Blaumanis Museum, is taking place in the Blaumanis memorial room. At the heart of this episode stands the pursuit of thematic topics — discussions, which in the last decades could be observed among the milieu of historians in Latvian literature and literates that entirely through insinuations deal with these 19th and 20th century Latvian *grand* writers' sexual orientation (sources: Zigmunds Skujiņš *Siržu zagļa uznāciens (The Entrance of the Heart Robber)* (2001), Līvija Volkova *Blaumaņa zelts (The Gold of Blaumanis)* (2008), Anna Kuzina *Blaumanis tuuplānā (Blaumanis' Close-up)* (2013)).

As precedents and vivid examples of Inga Meldere's interest in using the museum intervention genre, similar collaboration formats can be mentioned — a chain of memorial museums in Europe have invited artists: the Freud Museum in London has created such an exhibition program, The John Soane Museum (London), Huntly House (Edinburgh),

and The Brothers Grimm Museum (Berlin). Inviting artists to work with the permanent exhibition to enhance it with creative free interpretations and or comments of an emotional character, curators and historians remind us of the duality of historic facts, which are made by the selection principle's equivocality and personal motives.

The mainstay of the exhibition is the Rūdolfs Blaumanis letter correspondence, with its tutorial love for young literary talents which deserve the writer's own anxiety, and show how such emotions could be interpreted further in society. In using the writer's legendary fur, included in the exposition, as a shelter, bosom and an explosive light body symbol — being warm, all encompassing, fatherly, brotherly - the artist is interested in observing whether our prejudice for homosocial relationships doesn't limit and divide the wide colour palette, where the friendship forms of the romantic era could and do glisten.

A certain postcard — the artist's contribution to poet Aspazija

or in Blaumanis' words 'to the small marzipan snake' poet in her anniversary year — accompanies the exhibition.

INGA MELDERE (1979) lives and works in Helsinki and Riga. She works mainly with painting. Her gently coated canvases, characterized by their light and pastel tones, fragile combinations of materials and techniques, often depict apparently naive-seeming narratives inspired by personal memories and family events. Recent solo exhibitions include *Bērzkalni* (2015), gallery G12, Helsinki. *Magic Mountain* (2014), gallery XO, Riga; *Untitled* (2013) together with Oscar Santillan at Temnikova & Kasela gallery; *Enough is Enough* (2011) with Mikko Hintz at Temnikova & Kasela gallery; *Offset* (2011), gallery XO, Riga. Group shows: *Le fragole del Baltico* (2015) Careof, Milan; *Tides of Change. Balticum* (2011) HangART-7, Salzburg, Austria; *FAX* (2011) South London Gallery, London, England; *Mother of Wind* (2010) HFBK gallery, Hamburg, Germany. Meldere's work was also included in the Vilnius Painting Triennial in 2010.

Supporters: State Cultural Capital Foundation, Embassy of Finland in Latvia, VKN, Absolut, BIRZĪ, Valmiermuižas alus, Mozaika, Rīgas Laiks, Pieci.lv, Rīga TV24

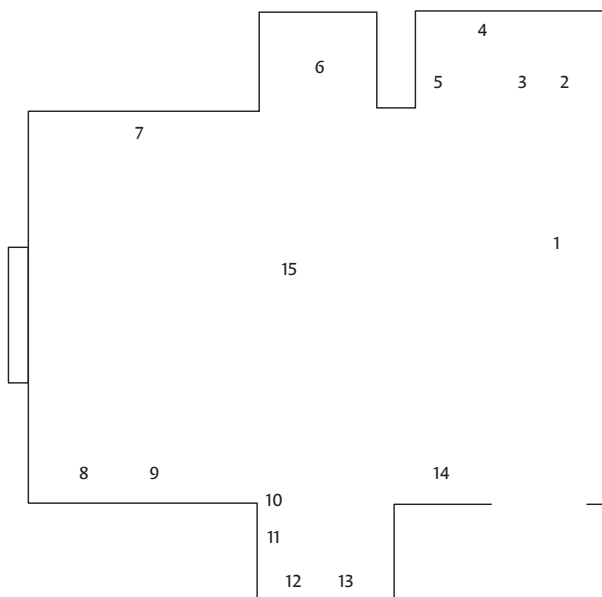
Special thanks to: the installation construction design author Mikko Hintz, and Didzis Breidaks

The exhibition is included in the official EuroPride 2015 programme.

Janis Rozentāls and Rūdolfs Blaumanis Museum

Alberta iela 12-9, Rīga

Working hours: Thurs, Fri, Sat, Sun: 11am – 6pm, Wed.: 11am – 7pm, Mon, Tue.: closed



- | | |
|---|--|
| 1 Portrait of the actress Dace Akmentiņa
Photo print
around 1907 | 9 Inga Meldere
'Young lad'
Oil on cardboard, 17 × 12 cm
2015 |
| 2 Photograph of Rūdolfs Blaumanis' mother Karlīne Blaumane
Beginning of the 20th century | 10 Janis Rozentāls
Sketch for the cover of the WRITING ALMANAC
Ink on paper
1908 |
| 3 Literary appendix for the newspaper 'Latvija'. Nr. 2
1908 | 11 Janis Rozentāls
Sketch for the cover of a publication of stories by Poruks
Watercolour and ink on paper
1906 |
| 4 Aleksandrs Štrāls
Portrait of Rūdolfs Blaumanis
1939
A reproduction of a painting by Janis Rozentāls | 12 Writing desk
Photograph by Jānis Grete, beginning of the 20th century.
Rūdolfs Blaumanis' production plans for Shakespeare's play 'Richard III' at the RLB theatre and a copy of the play (1902);
Handwriting samples by Rūdolfs Blaumanis;
Rūdolfs Blaumanis' business card. |
| 5 Photograph of Rūdolfs Blaumanis by the Beethoven mask and rosary in Janis Rozentāls' apartment (originals can be viewed in the Living Room)
1906 | 13 Inga Meldere
Object 'Marzipan snake'
Marzipan, 15 × 5 cm
2015 |
| 6 Rūdolfs Blaumanis' fur coat
1899 | 14 Mirror. |
| 7 Janis Rozentāls
Portrait of Rūdolfs Blaumanis' father Matīss
1894 | 15 Inga Meldere.
Installation 'Bosom'
Author of the construction design: Mikko Hintz
Wood, fabric, variable dimensions
2015 |
| 8 Rūdolfs Blaumanis with the young writers, around 1905
(On the left — Kārlis Skalbe, Rūdolfs Blaumanis in the middle)
Photo print | |

Program for the project *Slash*:

SLASH: IN BETWEEN THE NORMATIVE AND FANTASY
June 19 – August 2, 2015

Participants:

Tom of Finland
Aleesa Cohene
Zackary Drucker and Rhys Ernst
Lucas Foletto Celinski
Atis Jākobsons
Vladislavs Nastavševs
Benny Nemerofsky Ramsay
Armins Ozoliņš
Edgars Ozoliņš
Karol Radziszewski
Wolfgang Tillmans
Vilnis Vējš

Curated by Kaspars Vanags
Curator of display of Tom of Finland art works and ephemera: Gary Everett

Venue:
kim? Contemporary Art Centre
Maskavas Street 12/1, Riga

Opening hours:
Tue: 12pm – 8pm
Wed, Thu, Fri, Sat, Sun.: 12pm – 6pm

Minors must be accompanied by a parent or legal guardian while visiting the exhibition.

PRINCESS POMPOM IN THE VILLA OF FALLING FLOWERS
Matthew Lutz-Kinoy
June 19 – August 2, 2015

Organized by gallery 427 in collaboration with kim? Contemporary Art Centre

Venue: gallery 427
Elijas iela 20, Riga

Working hours:
Mon, Tue, Fri, Sat, Sun: closed
Wed, Thurs: 4pm – 7pm
or by appointment
