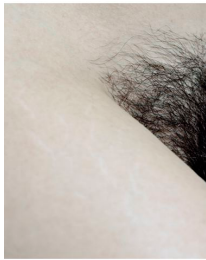


THE BODY ISSUE
curated by Frank Benson
January 11 - February 15



PAUL OUTERBRIDGE
Descending Night, 1935
Vintage gelatin silver photograph
16.5 x 9.47 inches



TALIA CHETRIT
Crotch, 2012
Digital C-Print
25 x 20 inches
Edition 2 of 4, with 2AP



ELAD LASSRY
Blond Girl 2, 2010
C-print, painted frame
14.5 x 11.5 x 1.5 inches
Edition API of 5, with 2AP



TORBJØRN RØDLAND
White Socks and Clogs, 2004-2010
Silver gelatin print
23.5 x 10.75 inches
Edition 2 of 3



MATTHEW SPIEGELMAN

Fourth Dimension, 2007

C-print

50 x 40 inches

Edition 2 of 5, with 2AP



FRANK BENSON

Figure Study (Chad), 2011

C-print

30 x 22 inches

76.2 x 55.9 cm

Edition 1 of 5, with 2AP



ROE ETHRIDGE

Maya with Diet Coke, 2008

42 x 55 inches

Edition EXS of 5, with 2AP



NANCY DE HOLL

A Crossbreed, 2007

Archival pigment print

50 x 40 inches

Edition 2 of 5, with 2AP



WOLFGANG TILLMANS

Karl, Utoquai 22, 2012

Inkjet print on paper mounted on
aluminum in artist's frame

Framed 31 6/8 x 40 3/4

Edition 1 of 3, with 1AP