

RHONA HOFFMAN GALLERY

Amanda Williams

What black is this you say?

November 6 – December 19, 2020

Exhibition checklist



AMANDA WILLIAMS

What black is this you say?—“Your love of bird watching could have caused your death that day. Your Harvard degree does not insure your safety”—black (study for 06.22.20), 2020

Watercolor on paper

7 x 10 inches, unframed

8.75 x 11.75 inches, framed

(C11-20-018)



AMANDA WILLIAMS

What black is this you say?—“You wish you could see the black on the inside of Stevie Wonder’s eyelids so you too could have inner visions”—black, v2 (study for 09.24.20), 2020

Watercolor on paper

7 x 10 inches, unframed

8.75 x 11.75 inches, framed

(C11-20-007)



AMANDA WILLIAMS

What black is this you say?—“You refuse to stop saying ‘irregardless’ despite knowing that it is in fact NOT a word.”—black (study for 06.12.20), 2020

Watercolor on paper

7 x 10 inches, unframed

8.75 x 11.75 inches, framed

(C11-20-021)



AMANDA WILLIAMS

What black is this you say?—"You're not African-American, you're black"—black (study for 08.20.20), 2020

Watercolor on paper
7 x 10 inches, unframed
8.75 x 11.75 inches, framed
(C11-20-006)



AMANDA WILLIAMS

What Black is this you say?—"Until the day he died, my father drove out to Pullman Bank on 111th (even after it was bought by US Bank) to do his banking because it was the only bank that would give him a small business loan to start his accounting firm in 1977; loyalty"—black (study for 06.05.20), 2020

Watercolor on paper
7 x 10 inches, unframed
8.75 x 11.75 inches, framed
(C11-20-011)



AMANDA WILLIAMS

What Black is this you say?—"I thought red kool-aid was juice til I was 10 years old"—black (study for 06.03.20), 2020

Watercolor on paper
7 x 10 inches, unframed
8.75 x 11.75 inches, framed
(C11-20-010)



AMANDA WILLIAMS

What black is this you say?—You still wanna cop that Gordon Gartrelle knock-off Denise made for Theo; two-tone flap in the back"—black (study for 06.18.20), 2020

Watercolor on paper
7 x 10 inches, unframed
8.75 x 11.75 inches, framed
(C11-20-016)



AMANDA WILLIAMS

What black is this you say?—"Wearing matching outfits with your boyfriend to go to Great America the day after prom"—black (study for 06.09.20), 2020

Watercolor on paper
7 x 10 inches, unframed
8.75 x 11.75 inches, framed
(C11-20-012)



AMANDA WILLIAMS

What black is this you say?—"You put sugar on your Frosted Flakes"—black (study for 06.06.20), 2020

Watercolor on paper
7 x 10 inches, unframed
8.75 x 11.75 inches, framed
(C11-20-020)



AMANDA WILLIAMS

What black is this you say?: 'Marvin Gaye singing his version of the national anthem so soft and sexy that it made us instantly forget that there was even an original version'—black (study for 06.03.20), 2020

Watercolor on paper
7 x 10 inches, unframed
8.75 x 11.75 inches, framed
(C11-20-013)



AMANDA WILLIAMS

What black is this you say?—"Just because I'm black and you happen to know me doesn't make me your black friend."—black (study for 06.23.20), 2020

Watercolor on paper
7 x 10 inches, unframed
8.75 x 11.75 inches, framed
(C11-20-015)



AMANDA WILLIAMS

What black is this you say?—“You have to survive through alternative economic systems and are often met with extra-legal consequences”—black (study for 06.25.20), 2020

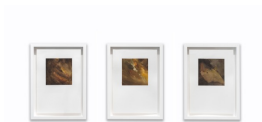
Watercolor on paper
7 x 10 inches, unframed
8.75 x 11.75 inches, framed
(C11-20-019)



AMANDA WILLIAMS

What black is this you say?—“You can recite the names of more unarmed black people killed by police violence, than you can the names of black people holding U. S. Patents for innovation.”—black (study for 07.15.20)

Watercolor on paper
7 x 10 inches
(C11-20-014)



AMANDA WILLIAMS

What black is this you say?—“You got good hair cuz you got some Indian in your family”—black, (study for 08.20.20), 2020

Watercolor on paper
21 x 10 inches (triptych)
(C11-20-022)



AMANDA WILLIAMS

A Condition of Skin: A Passing Hazard , 2020

Oil, mixed media on panel
16 x 8 inches (diptych)

(C11-20-005)



AMANDA WILLIAMS

What black is this you say?—“None of your business”—black (11.06.20), 2020

Oil, mixed media on wood panel
20 x 20 inches
(C11-20-043)



AMANDA WILLIAMS

What black is this you say?—"You thought getting Obama elected meant you could take a break from blackness"—black (study for 08.09.20), 2020

Watercolor on paper
7 x 10 inches, unframed
8.75 x 11.75 inches, framed
(C11-20-026)



AMANDA WILLIAMS

What black is this you say?—"Pink Oil has smoothed over so much and solved so many problems I've contemplated using it for cooking oil AND as glue"—black (study 06.07.20), 2020

Watercolor on paper
7 x 10 inches, unframed
8.75 x 11.75 inches, framed
(C11-20-028)



AMANDA WILLIAMS

What black is this you say?—"You're hard headed AND tender headed at the same time"—black (study for 09.12.20), 2020

Watercolor on paper
7 x 10 inches, unframed
8.75 x 11.75 inches, framed
(C11-20-027)



AMANDA WILLIAMS

What black is this you say?—"All the too cool for school Dads on our block growing up who called me 'suga', could expertly hold a convo, cut grass, join in on the young cats street ball game, and never forget to wave bye to you as they left for work, ALL WHILE perfectly dangling what appeared to be the same exact toothpick from their mouths"—black (study for 06.21.20), 2020

Watercolor on paper
7 x 10 inches, unframed
8.75 x 11.75 inches, framed
(C11-20-025)

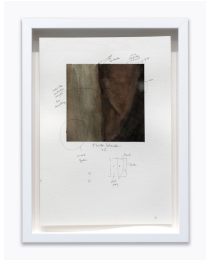


AMANDA WILLIAMS

What black is this you say—"That's why Black people ain't never gone get nowhere"—black (study for 08.12.20), 2020

Watercolor on paper
7 x 10 inches, unframed
8.75 x 11.75 inches, framed

(C11-20-029)



AMANDA WILLIAMS

What black is this you say?—"You didn't know the word 'fat', existed when you were growing up. Everyone you knew described black women in particular, as 'heavy-set', 'big-boned', full-figured', healthy, and of course, 'thick'; 'skinny' was not something you wanted to be."—black, v2 (study for 07.11.20), 2020

Watercolor on paper
7 x 10 inches, unframed
8.75 x 11.75 inches, framed
(C11-20-030)



AMANDA WILLIAMS

What black is this you say?—"A west side imma snatch-yo-edges-back-with-a-hand-gesture black"—black (study for 08.27.20), 2020

Watercolor on paper
7 x 10 inches, unframed
8.75 x 11.75 inches, framed
(C11-20-024)



AMANDA WILLIAMS

What black is this you say?—"You're always confused about why anyone would think you would want to celebrate suffragists when black woman are STILL suffering."—black (study for 08.27.20), 2020

Watercolor on paper
7 x 10 inches, unframed
8.75 x 11.75 inches, framed
(C11-20-031)



AMANDA WILLIAMS

What black is this you say?—"You're not African-American, you're black"—black (08.23.20), 2020

Oil on linen stretched over panel
60 x 60 inches
(C11-20-034)



AMANDA WILLIAMS

What black is this you say?—"Apparently even Aunt Jemima and Uncle Ben's Lives Matter now."—black (06.17.20), 2020

Oil, mixed media on wood panel
20 x 20 inches
(C11-20-035)



AMANDA WILLIAMS

What black is this you say?—"You wish you could see the black on the inside of Stevie Wonder's eyelids so you too could have inner visions"—black, v2 (09.24.20), 2020

Oil on linen stretched over panel
20 x 20 inches
(C11-20-040)



AMANDA WILLIAMS

What Black is this you say?—"Until the day he died, my father drove out to Pullman Bank on 111th (even after it was bought by US Bank) to do his banking because it was the only bank that would give him a small business loan to start his accounting firm in 1977; loyalty"—black (06.05.20), 2020

Oil on linen stretched over panel
60 x 60 inches
(C11-20-033)



AMANDA WILLIAMS

What black is this you say?—"You thought getting Obama elected meant you could take a break from blackness"—black (08.09.20), 2020

Oil, mixed media on wood panel
60 x 60 inches
(C11-20-032)



AMANDA WILLIAMS

What black is this you say?—“You secretly believe praying over your smothered pork chops reduces the risk of hypertension and calories”—black (06.06.20), 2020

Oil, mixed media on wood panel
20 x 20 inches
(C11-20-041)



AMANDA WILLIAMS

What black is this you say?—“It’s easier for young black men to rip an entire ATM out of a bank drive-thru machine and crack it open to get to the money than it is for them to get a job, Bank Account or Loan from that same bank”—black (06.03.20), 2020

Oil, mixed media wood panel
20 x 20 inches
(C11-20-036)



AMANDA WILLIAMS

What black is this you say?—“Your brown is blacker than thou”—black (study for 07.06.20), 2020

Oil, mixed media on wood panel
20 x 20 inches
(C11-20-039)



AMANDA WILLIAMS

What black is this you say?—“Your mother calmly explaining to you all from her perch in the front seat of the car, that you had better not embarrass her nor the race once you get inside Evergreen Plaza.”—black (study for 06.11.20), 2020

Oil, mixed media on wood panel

20 x 20 inches
(C11-20-038)



AMANDA WILLIAMS

Feel the Warmth and Luxury, 2020
Faux fur, gold leaf on wood panel
16 x 9 inches
(C11-20-048)



AMANDA WILLIAMS

What black is this you say?—"Your love of bird watching could have caused your death that day. Your Harvard degree does not insure your safety"—black (06.22.20), 2020

Oil, mixed media on wood panel

20 x 20 inches
(C11-20-042)