

12a Bourdon Street  
London W1K 3PG  
UK  
+44 (0)20 743 99 777

41 Polydefkous  
18545 Piraeus  
+30 (0)210 4123977  
Greece

info @ rodeo-gallery.com  
www . rodeo-gallery.com

*PREVIEW*

# Sidsel Meineche Hansen

## *home vs owner*



Installation views, Sidsel Meineche Hansen, *home vs owner*, Rodeo, Piraeus, 2020

**RODEO**



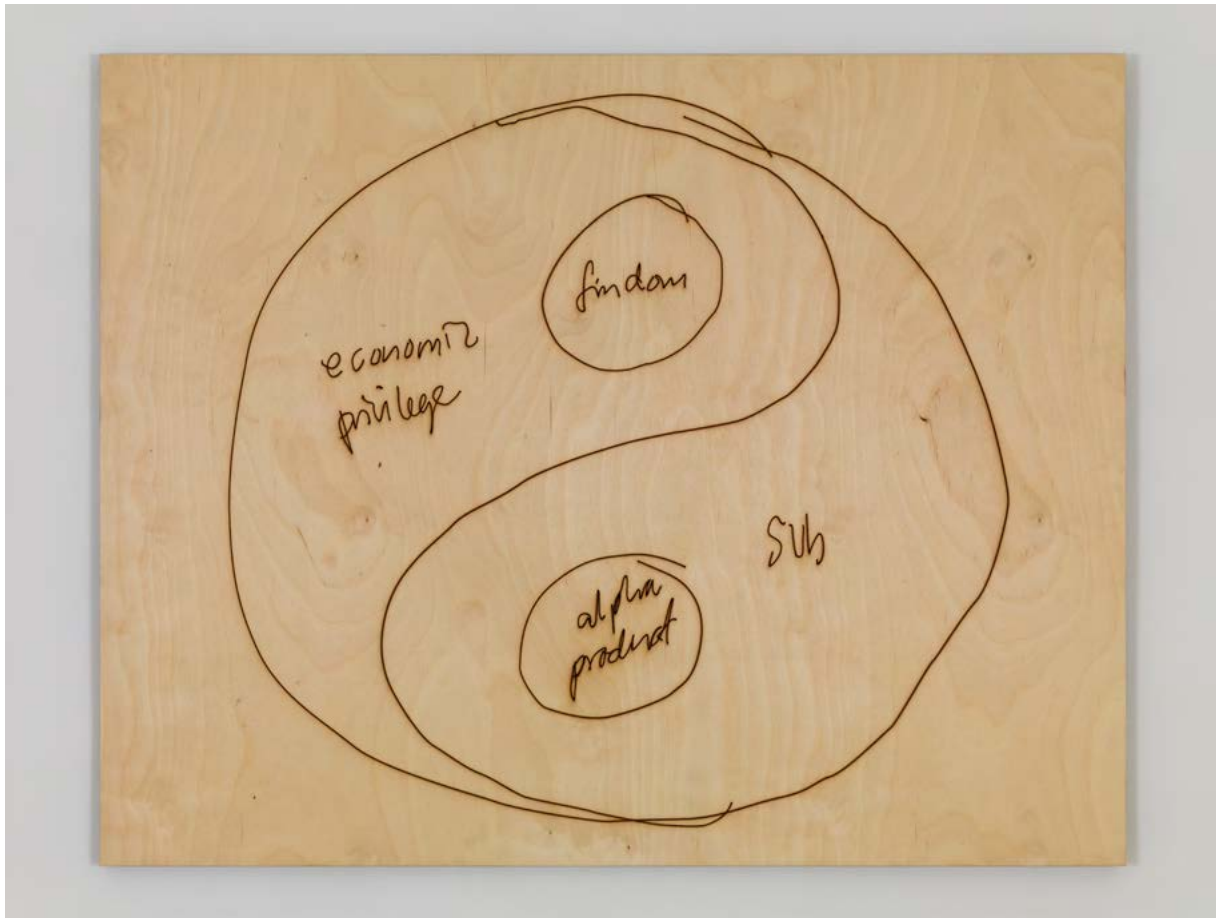
Installation views, Sidsel Meineche Hansen, *home vs owner*, Rodeo, London, 2020

**RODEO**

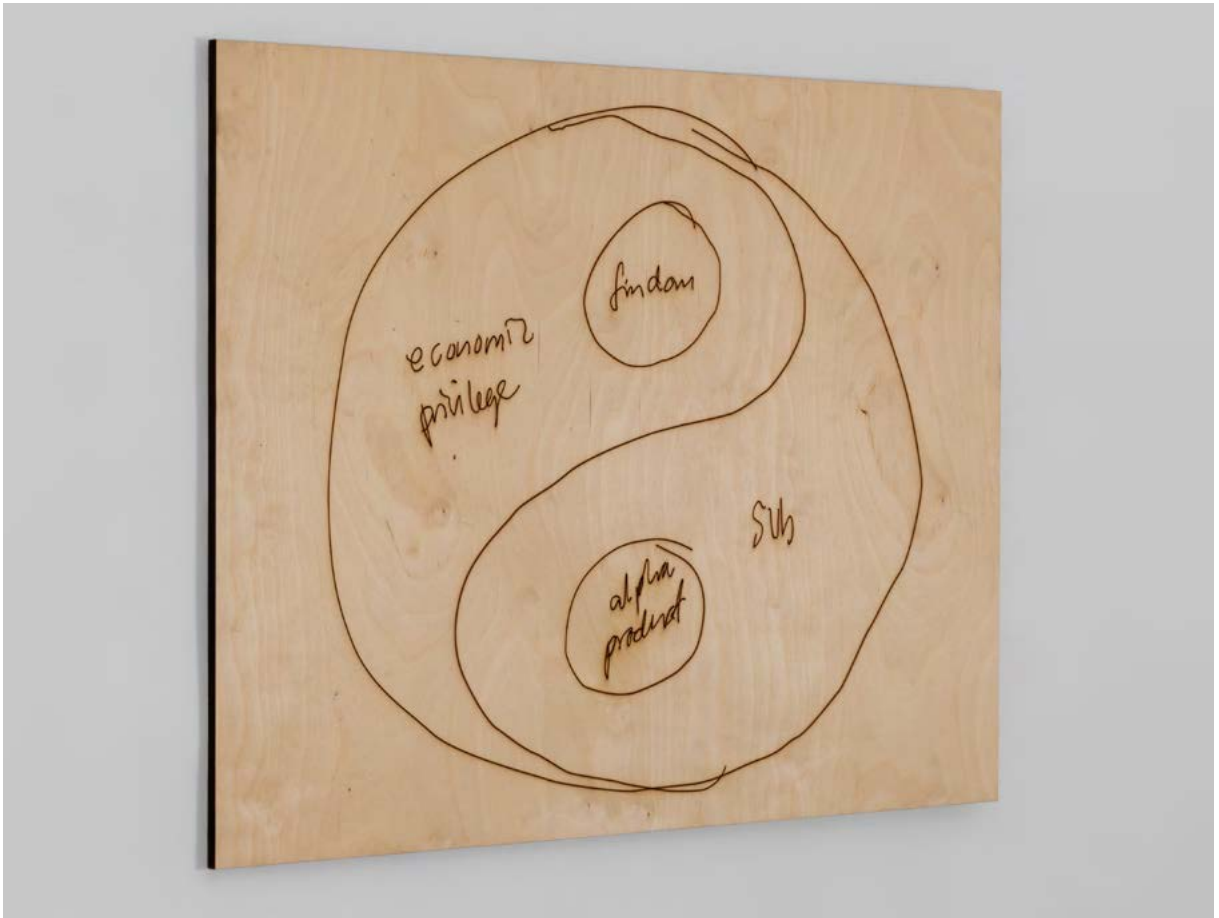


Installation view, Sidsel Meineche Hansen, *home vs owner*, Rodeo, London, 2020

**RODEO**

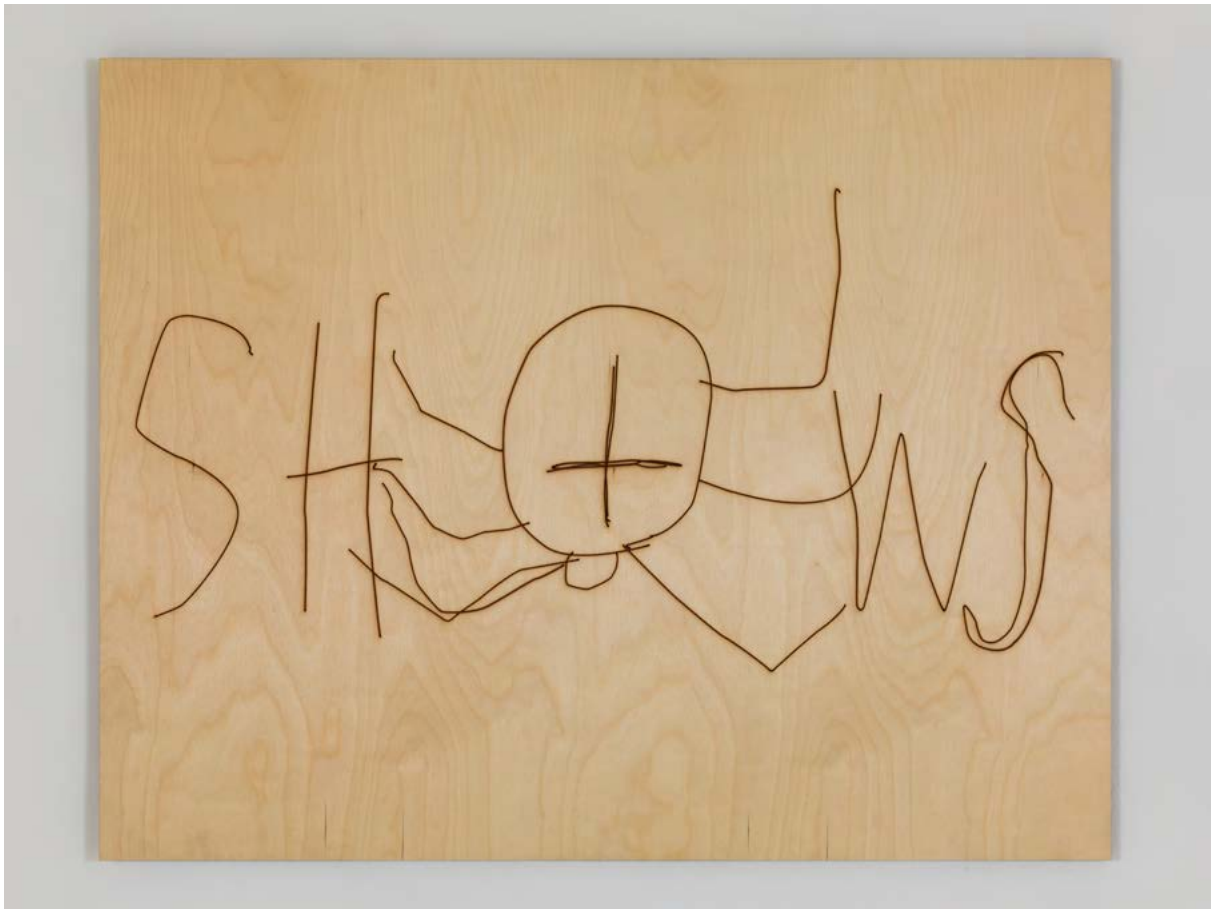


*alpha product*  
Laser-cut drawing on plywood, 105 x 84 cm, 2018  
Unique



*alpha product*  
Side view

**RODEO**



*shows (cross work)*  
Laser-cut drawing on plywood, 105 x 84 cm, 2018  
Unique

**RODEO**



*N15*  
Laser-cut drawing on plywood, 105 x 84 cm, 2018  
Unique



*Untitled*  
Laser-cut drawing on plywood, 109 x 87 cm, 2016  
Unique

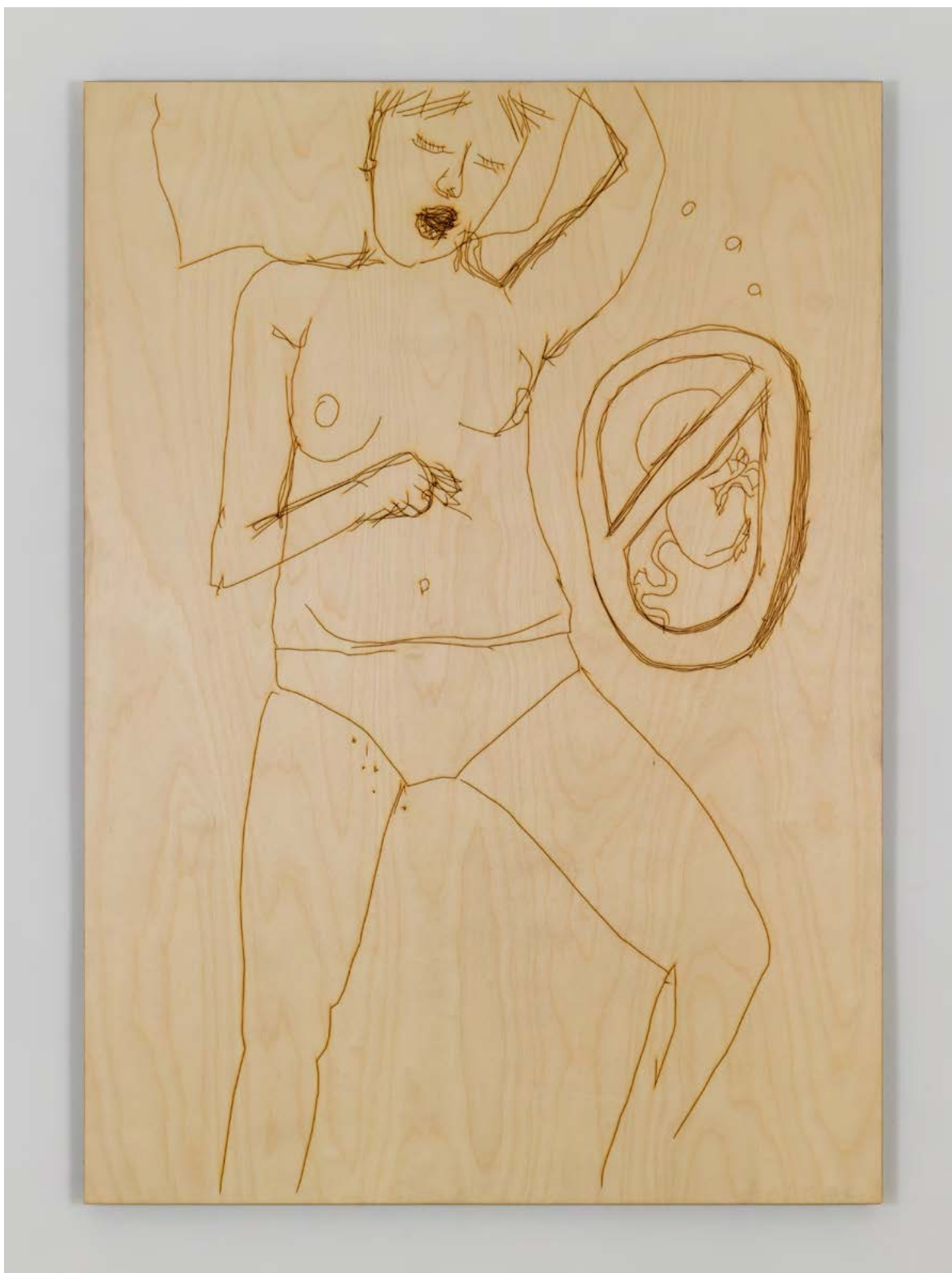


*Untitled*  
Side view

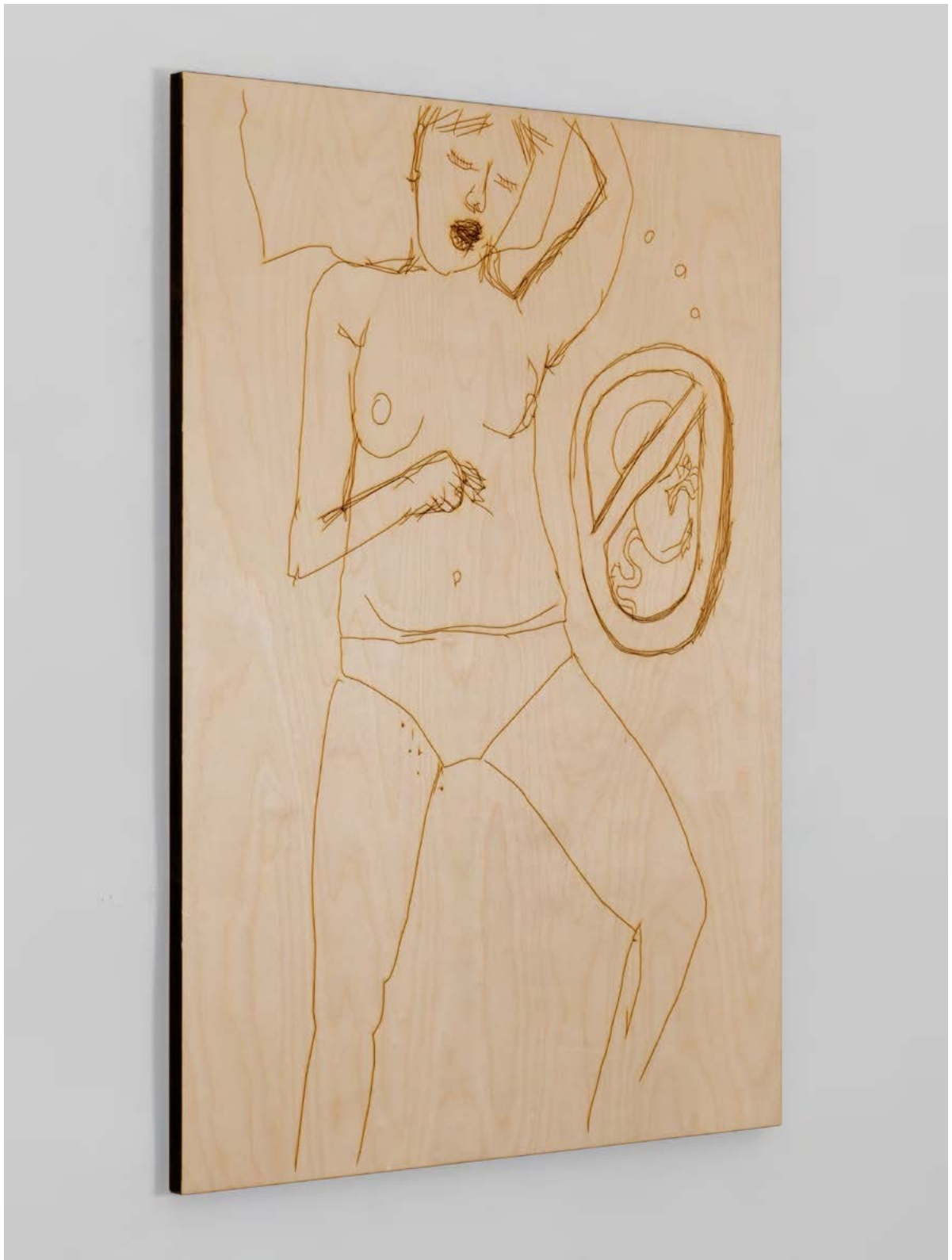
**RODEO**



*Satans Museum for Kunst*  
Laser-cut drawing on plywood, 240 x 122 x 9 cm, 2019  
Unique

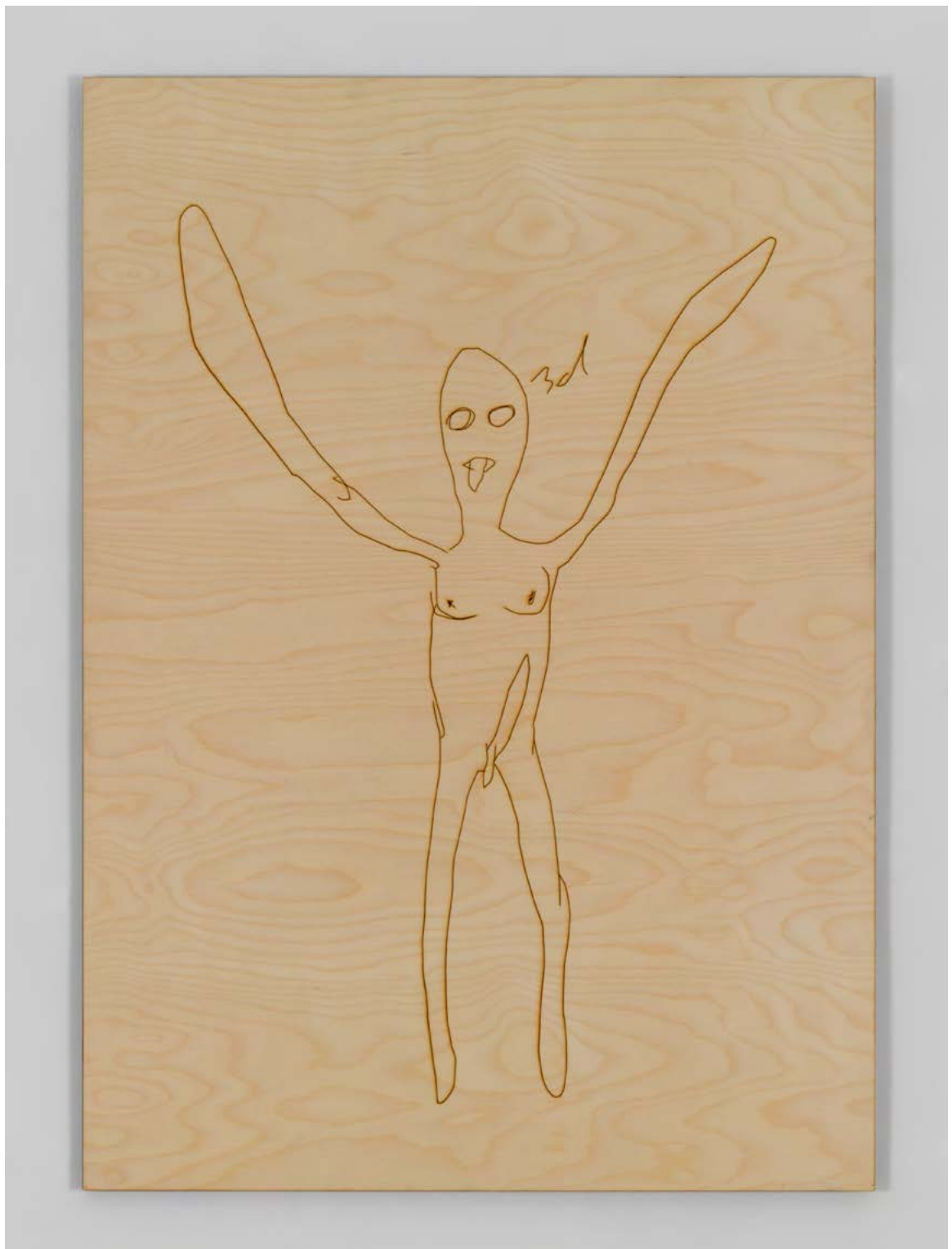


*No Baby*  
Laser-cut drawing on plywood , 121 x 87 cm, 2015  
Unique



*No Baby*  
Side view

**RODEO**



*Wannabe Dickgirl*  
Laser-cut drawing on plywood, 121 x 87 cm, 2016  
Unique



*Gallery Pinocchio*  
Crayon drawing on found shelf, 56 x 33 cm, 2020  
Unique

**RODEO**



*Real Doll Skulls*  
Diptych, watercolour on paper, 54 x 81 cm, 2018  
Unique



*Real Doll Skulls*  
Side view

**RODEO**



*Untitled (blueprint for sex robot)*  
Technical drawing printed on paper, pen and pencil, Custom made beech box frame, acid free /  
reversible mounting, 143 x 265 cm, 2018  
Unique



*It's not Mechanical. My Hell Mouth Opens but Can't Close*  
Digital photography on paper, 56 x 100 cm, 2018  
Edition 1/5 + 2AP



*End-user*

Digital photography on paper, 56 x 100 cm, 2018  
Edition 1/5 + 2AP

**RODEO**



*An Artist's Guide to Stop Being An Artist*  
Digital photography on paper, 56 x 100 cm, 2019  
Edition 1/5 + 2AP



*DICKGIRL 3D(X)*

CGI animation, HD video with sound installed on DIY BDSM structure. CGI modelling and animation:  
Workflow Ltd. Soundtrack: 'exotixa" by Niksi, duration: 3 min. loop, 2016  
Edition 2/3 + 3AP

<https://vimeo.com/183001877>

password: rodeo

**RODEO**



*Maintenancer*

Digital video with sound, in collaboration with Therese Henningsen, duration 13 min, 05 sec., 2018  
Edition 1/5 + 2AP

<https://vimeo.com/438623447>  
password: SMHTH2018

**RODEO**



*Untitled*

Two cardboard boxes. Order delivered from WM Dolls, Songshan China and Doll House (StickUpCrew IVS)  
Viby J; Denmark, 41 x 32 x 29 cm and 161 x 44 x 31 cm, 2018  
Unique



*Daddy Mould*

Industrial cast in two parts made from fiber glass, resin and vaseline, 149 x 37 x 92 cm, 149 x 48 x 89 cm, 2018  
Unique

**RODEO**

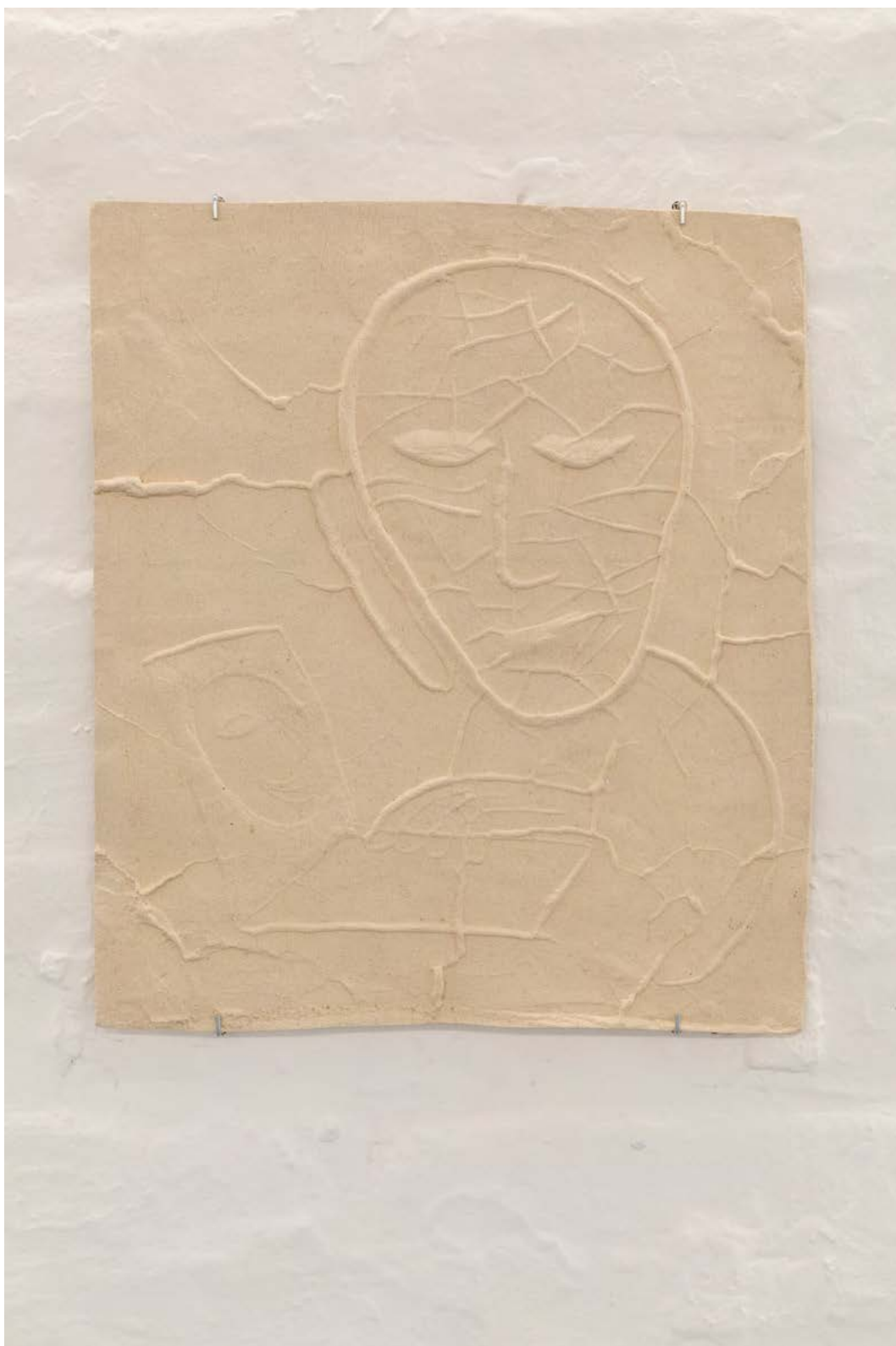


*Daddy Mould*  
Installation view

**RODEO**



*Anti-*  
Piggybank in bronze, 40 x 20 x 20 cm, 2017  
on demand edition



*PA.VA*  
Imprint in clay, 40 x 47 cm, 2018  
Unique



*home vs owner*

Cutlery cast in silver, fabric support made by Louis Backhouse, 25 x 43 cm, 2020  
Edition 1/3 + 1AP

**RODEO**



*home vs owner*  
Side view

**RODEO**

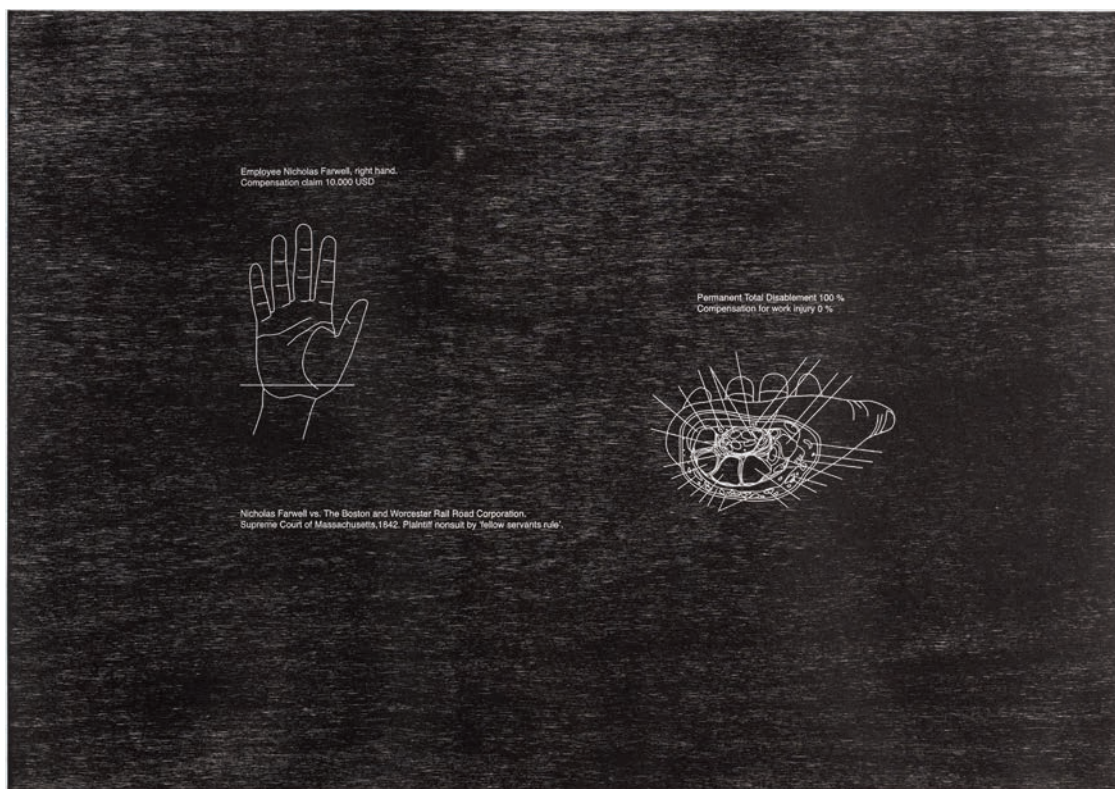
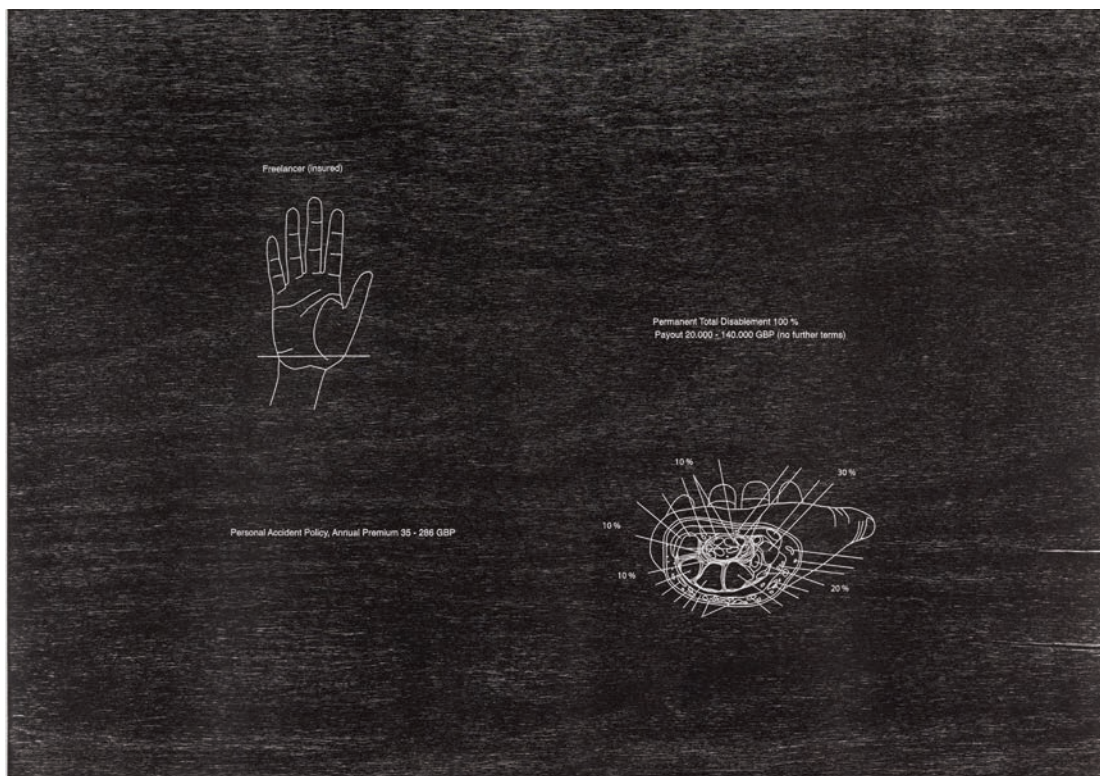


*Tendinitis Freelance*

Laser woodcut on paper, mounted on aluminium under museum glass, 51.7 x 36.4 cm, 2013

Edition 1/5 + 2AP

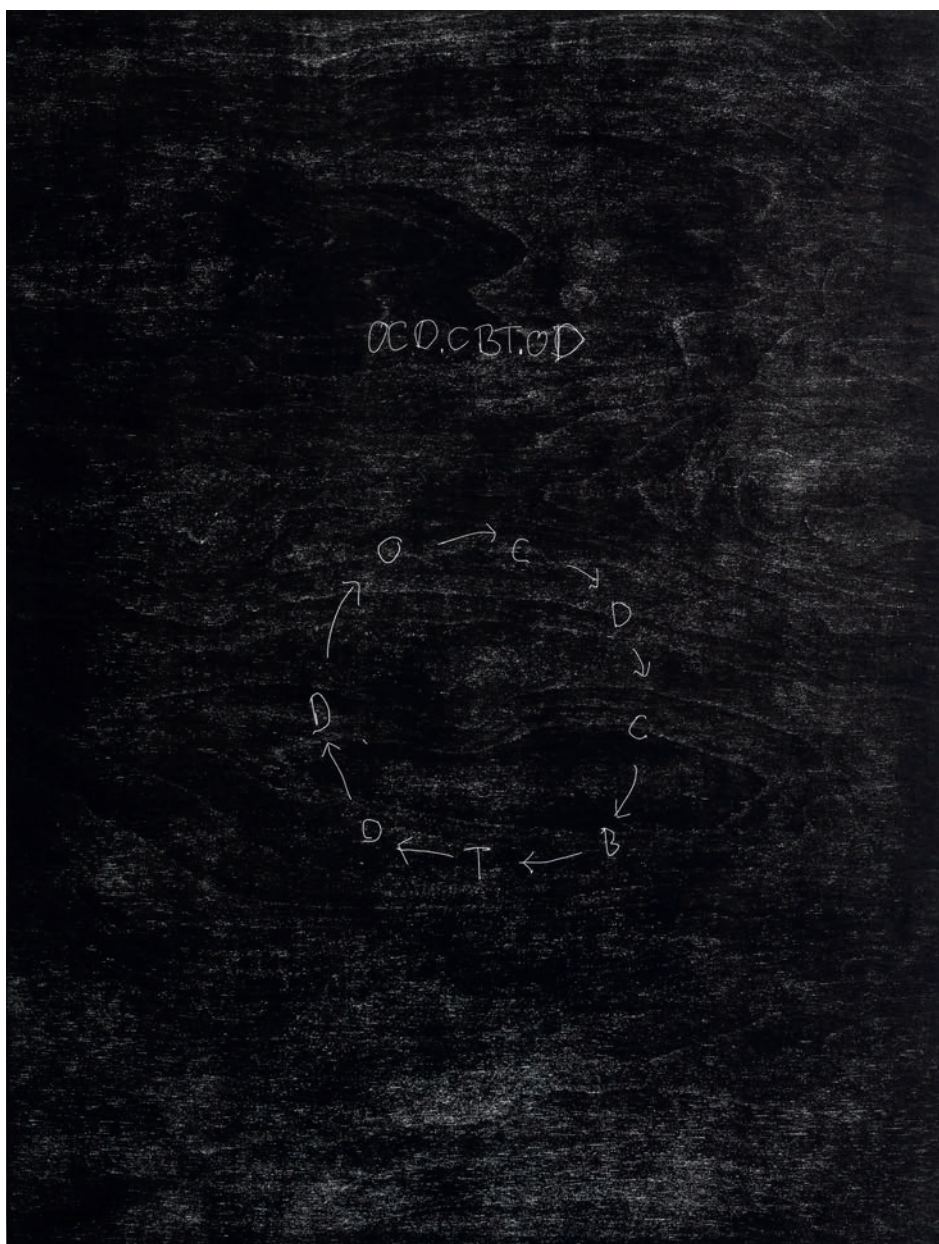
**RODEO**



*Freelancer and Employee*

Diptych, laser woodcuts on paper, mounted on aluminium under museum glass, 36.2 x 51.9 cm, 2013

Edition 1/5 + 2AP

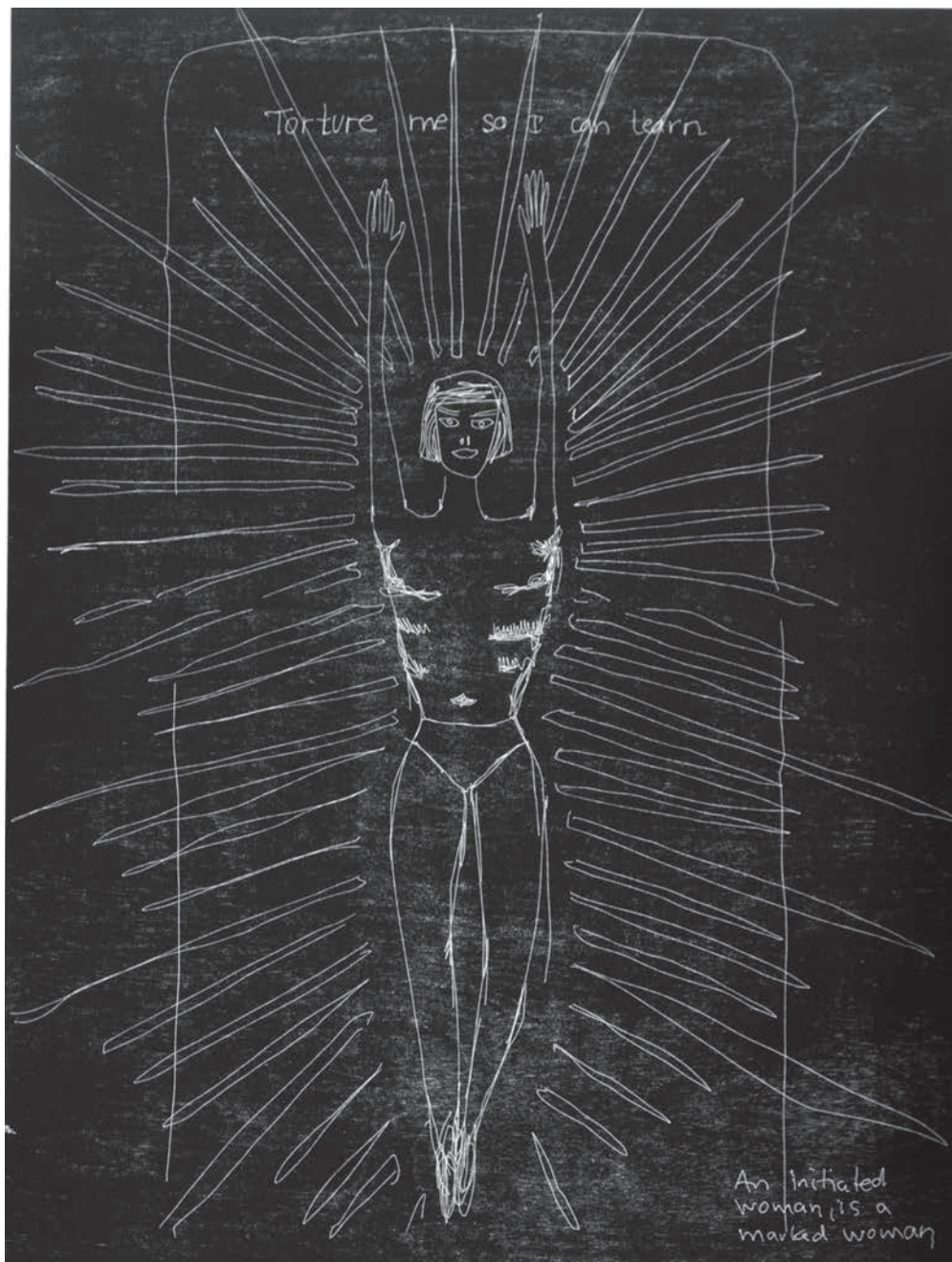


*OCD.CBT.OD*

Laser woodcut on paper, mounted on aluminium under museum glass, 62.8 x 47.9 cm, 2013

Edition 1/5 + 2AP

**RODEO**

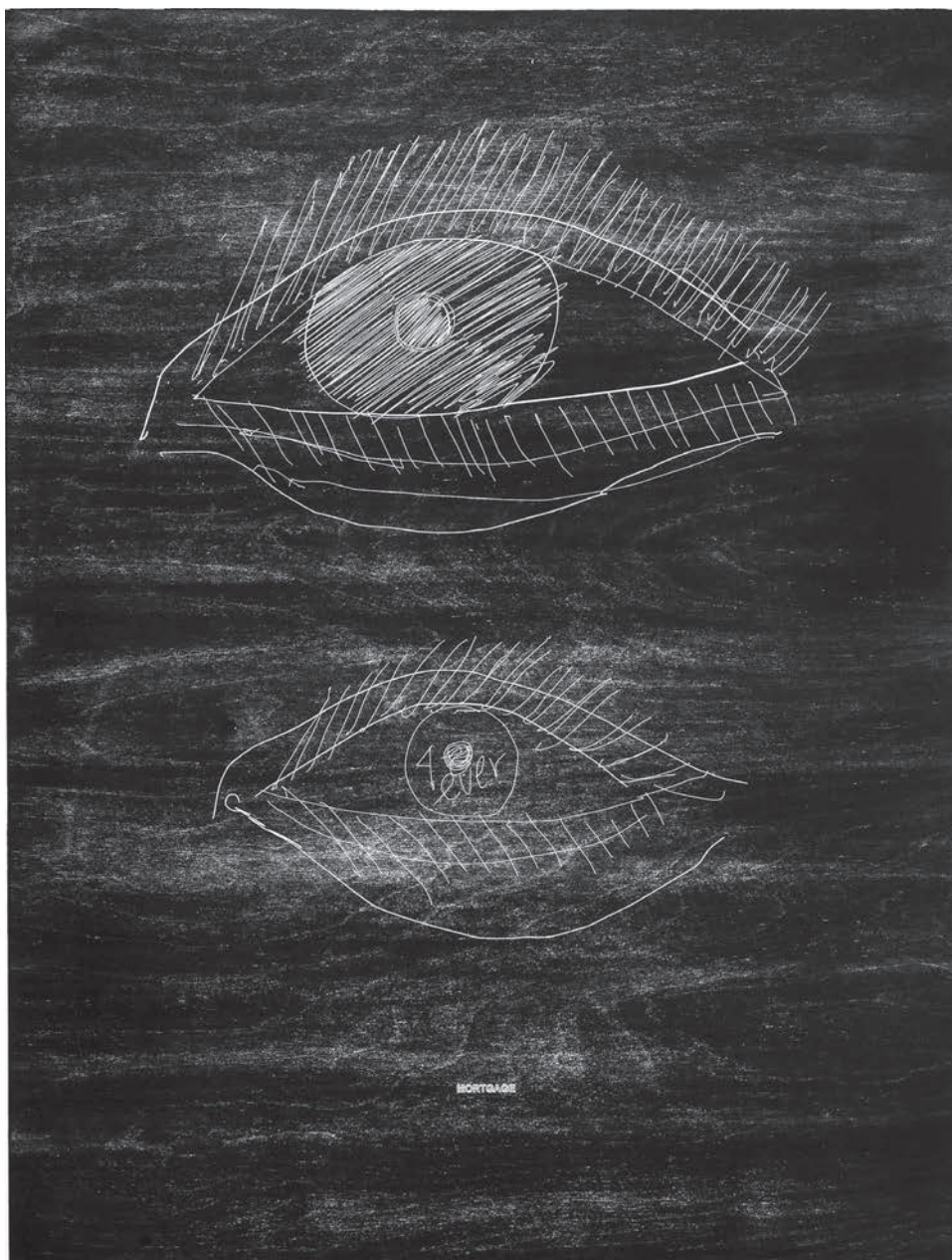


*Torture me so I can learn miss Overtaci*

Laser woodcut on paper, mounted on aluminium under museum glass, 62.8 x 47.9 cm, 2013

Edition 1/5 + 2AP

**RODEO**



*4ever mortgage*

Laser woodcut on paper, mounted on aluminium under museum glass, 62.8 x 48 cm, 2013

Edition 1/5 + 2AP

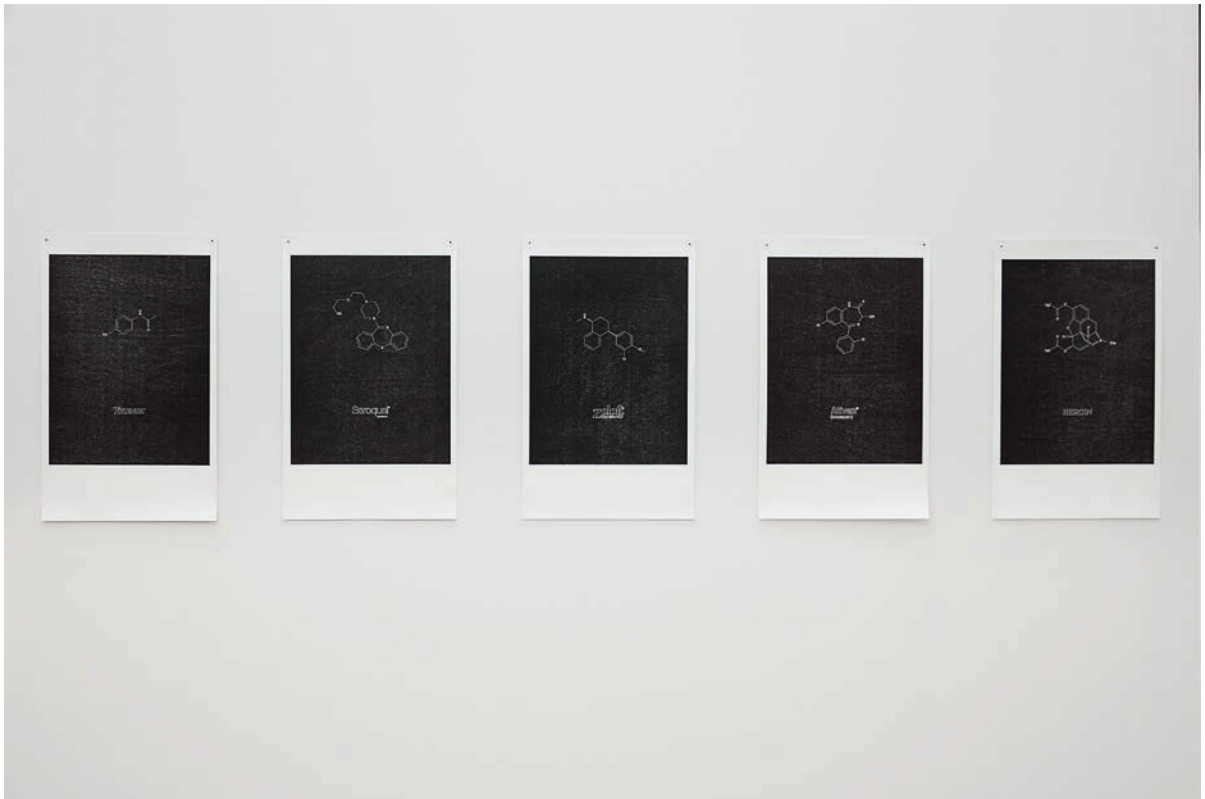
**RODEO**



*Ryanair ownership*

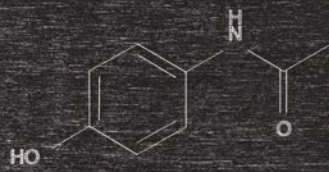
Laser woodcut on paper, mounted on aluminium under museum glass, 36.4 x 46.8 cm, 2014  
Edition 1/5 + 2AP

**RODEO**



*Toxic Institution (1-5)*

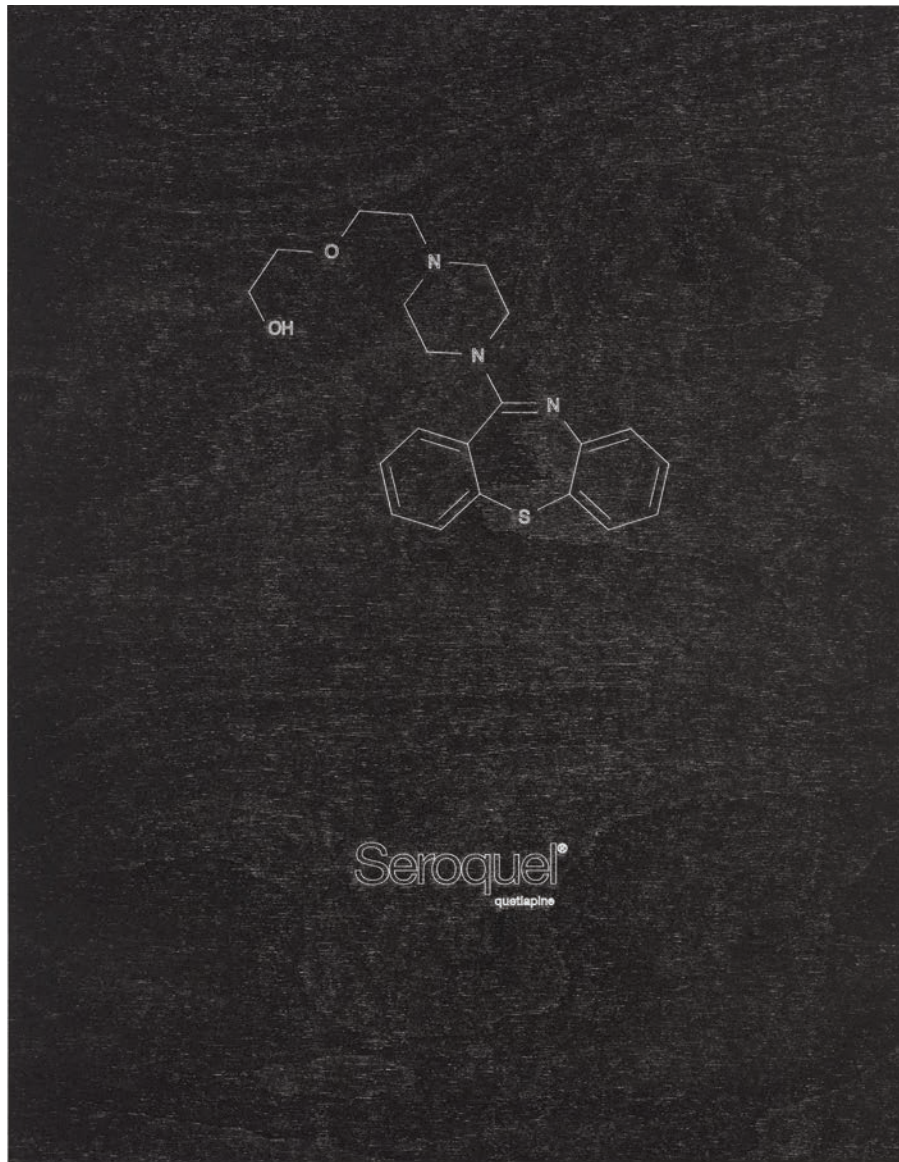
Laser woodcut on paper, mounted on aluminium under museum glass, 47 x 36.5 cm (each), 2014  
Edition 1/5 + 2AP



TYLENOL

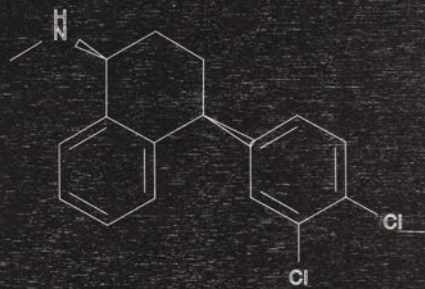
*Toxic Institution (1-5)*  
Detail

**RODEO**



*Toxic Institution (1-5)*  
Detail

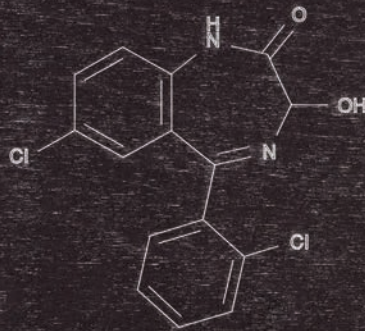
**RODEO**



**zoloft**  
(Sertraline HCl)

*Toxic Institution (1-5)*  
Detail

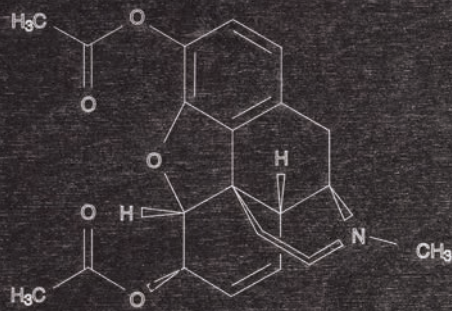
**RODEO**



Ativan®  
(lorazepam)

*Toxic Institution (1-5)*  
Detail

**RODEO**



HEROIN

*Toxic Institution (1-5)*  
Detail

**RODEO**



*Bad feminist anti-hero*

Laser woodcut on paper, mounted on aluminium under museum glass, 135.3 x 79.8 cm, 2016

Edition 1/5 + 2AP

**RODEO**

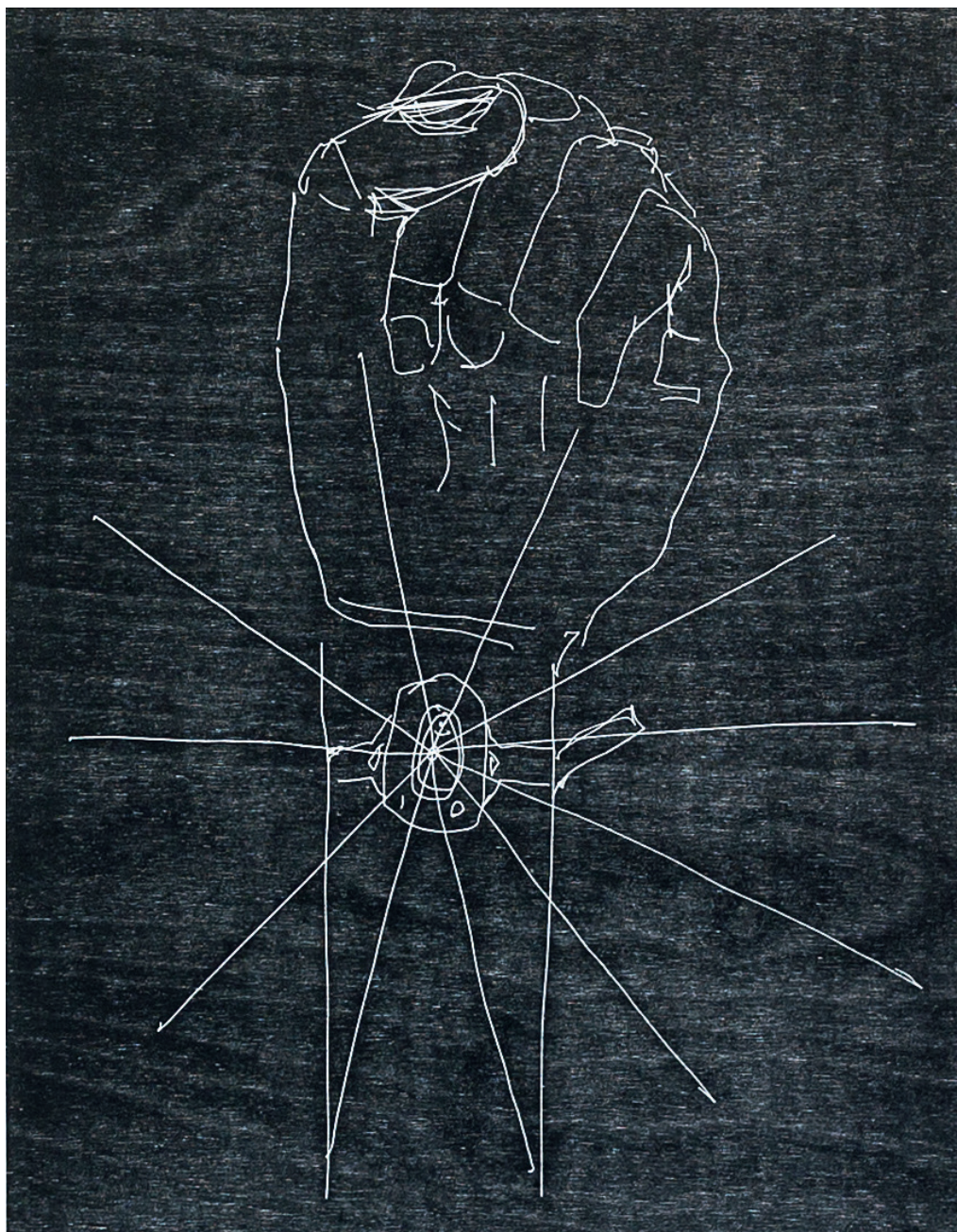


*Transdead*

Laser woodcut on paper, mounted on aluminium under museum glass, 46.5 x 36.2 cm, 2014

Edition 1/5 + 2AP

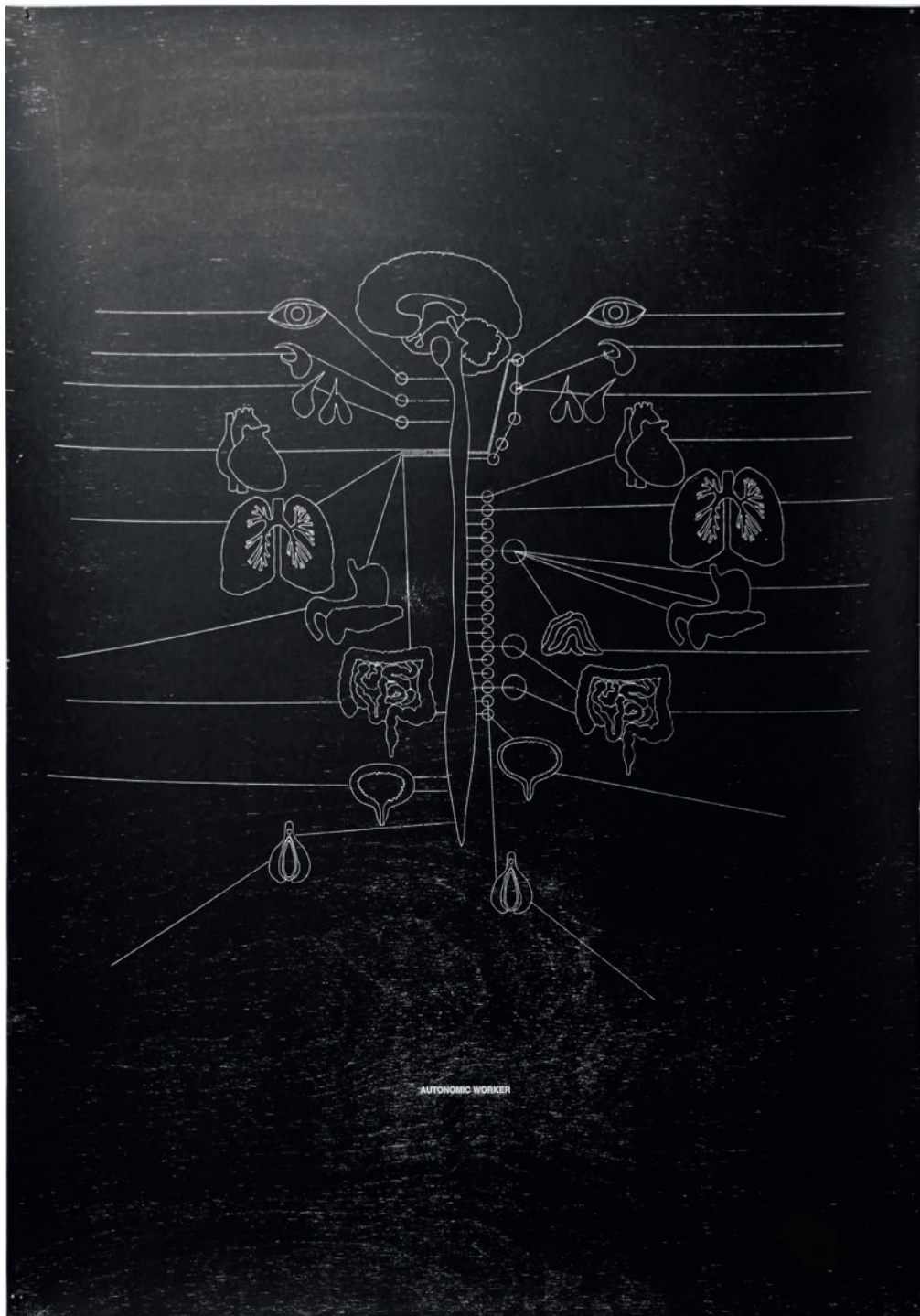
**RODEO**



*iheal*

Laser woodcut on paper, mounted on aluminium under museum glass, 46.8 x 36.5 cm, 2014  
Edition 1/5 + 2AP

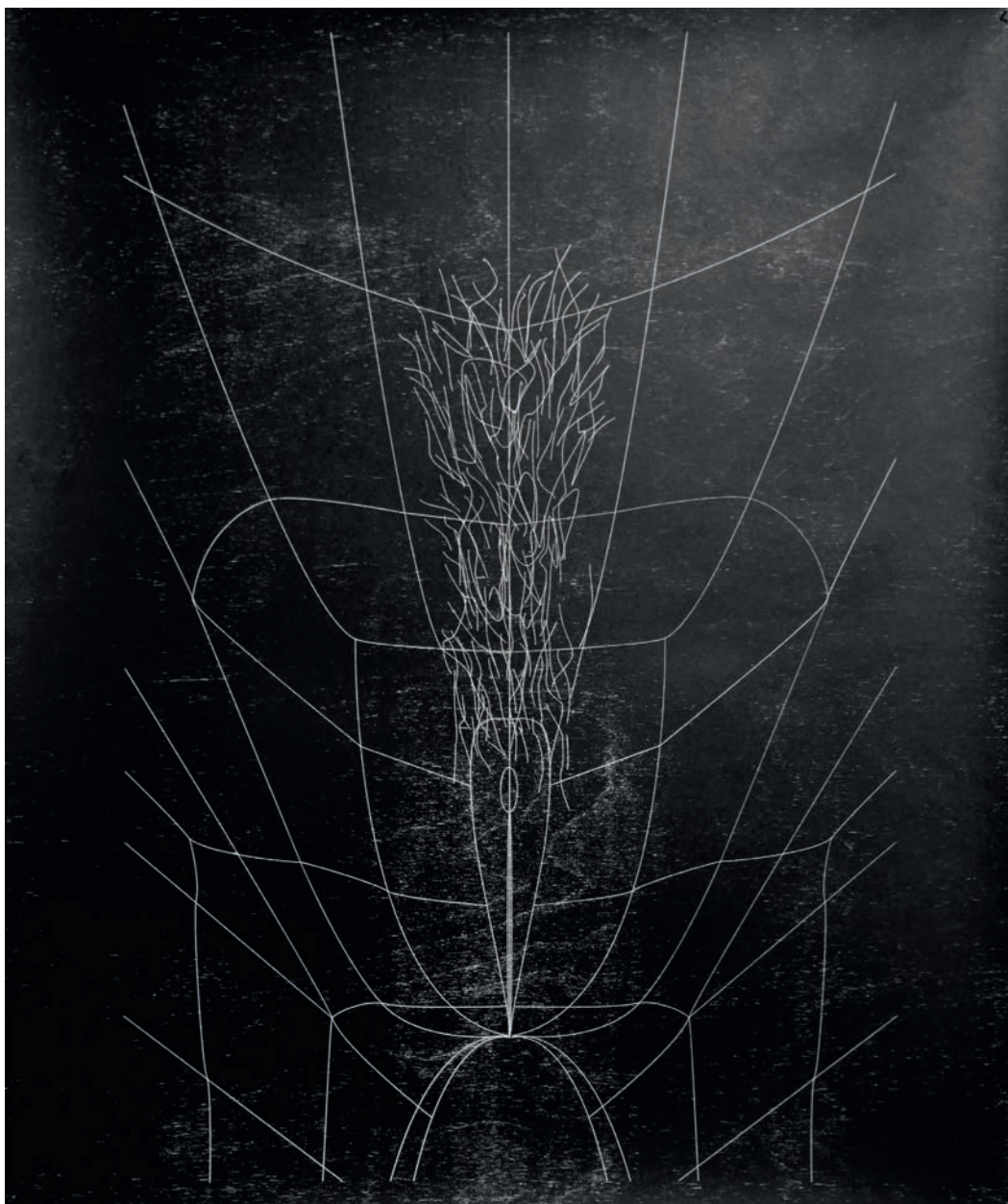
**RODEO**



*Autonomic Worker*

Laser woodcut on paper, mounted on aluminium under museum glass, 101.3 x 70.7 cm, 2013/2016  
Edition 1/5 + 2AP

**RODEO**



*HIS CORPORATE CUNT ART, credit Nikola Dechev (Series 1-3, #1)*  
Laser woodcut on paper, mounted on aluminium under museum glass, 101.4 x 84.8 cm, 2016  
Edition 2/5 + 2AP

**RODEO**



*HIS CORPORATE CUNT ART, credit Nikola Dechev (Series 1-3, #2)*  
Laser woodcut on paper, mounted on aluminium under museum glass, 101.9 x 84.7 cm, 2016  
Edition 2/5 + 2AP



*HIS CORPORATE CUNT ART, credit Nikola Dechev (Series 1-3, #3)*  
Laser woodcut on paper, mounted on aluminium under museum glass, 101.8 x 84.8 cm, 2016  
Edition 1/5 + 2AP



*home vs owner 2*  
Bricks and mortar, 60 x 60 x 120 cm, 2020  
Unique



*home vs owner 2*

Detail view

**RODEO**



*silver spoon*

Spoon cast in silver, velvet pouch with printed text, 11 x 13 cm, 2020  
On demand

For more information on the works  
please contact **Sylvia Kouvali** at [info@rodeo-gallery.com](mailto:info@rodeo-gallery.com) or call at +44 207 43 99 777  
or **Katy Green** at [katy@rodeo-gallery.com](mailto:katy@rodeo-gallery.com)

Thank you!