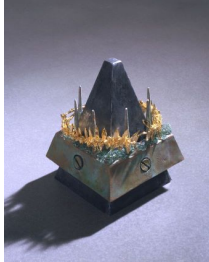


Petzel

Keith Edmier
Regeneratrix
May 9 - June 20, 2015



KEITH EDMIER

Hieros gamos

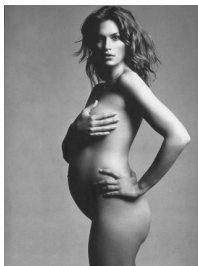
2015

cast aluminum, gold-plated copper, gold-plated bronze, platinum, safety glass

8.25 x 6.25 x 6.25 inches

21 x 15.9 x 15.9 cm

(KE 15/001)



MICHAEL THOMPSON

Cindy Crawford Expecting

1999

archival pigment print on heavy weight fine art cotton rag paper

22 x 17 inches

55.9 x 43.2 cm

Edition of 5

(FP 15/024)



KEITH EDMIER

[In the Style of] GPK (Emulation)

2015

Dental acrylic, acrylic paint

Framed Dimensions:

40.5 x 48.5 x 4 inches

102.9 x 123.2 x 10.2 cm

Image Dimensions:

32 x 40 inches

81.3 x 101.6 cm

(KE 15/005)



KEITH EDMIER
[In the Style of] GPK (Virtue)

2015
Dental acrylic, acrylic paint
Framed Dimensions:
40.5 x 48.5 x 4 inches
102.9 x 123.2 x 10.2 cm
Image Dimensions:
32 x 40 inches
81.3 x 101.6 cm
(KE 15/004)



KEITH EDMIER
[In the Style of] GPK (Conversation)

2015
Dental acrylic, acrylic paint
Framed Dimensions:
40.5 inches x 48.5 inches x 4 ft 1 inches
81.3 x 101.6 x 2.5 cm
Image Dimensions:
32 x 40 inches
81.3 x 101.6 cm
(KE 15/003)



KEITH EDMIER
The Kelly Bag (Salmacis)

2015
Glass, dental acrylic, polyurethane, acrylic
paint, and silk on limestone base
11.5 x 19 x 12 inches
29.2 x 48.3 x 30.5 cm
Edition of 3, 1 AP
(KE 15/002.1)



KEITH EDMIER
Sculptura

2014
Bavarian lithographic limestone
16.25 x 12 x 2.5 inches
41.3 x 30.5 x 6.4 cm
(KE 15/006)



KEITH EDMIER
The Transit of Venus (Melanie)

2015
safety glass and aluminum
44 x 38 x 8 inches
111.8 x 96.5 x 20.3 cm
(KE 15/011)



KEITH EDMIER

Penn Station Ciborium

2012 - 2013

Steel, wood, concrete, glass, epoxy, fiberglass, polyurethane, railing fragment from the original Pennsylvania Station, sculpture fragments from the artist's studio, and soil from the Meadowlands, New Jersey

226.38 x 157.48 x 157.48 inches

575 x 400 x 400 cm

(KE 13/009)



KEITH EDMIER

Still Life with Cattleya Orchid, Two

Hummingbirds and a Beetle, c. 1875 - 90

(Brassolaeliocattleya Barbara Bush 'First Lady')

2015

Dental acrylic and acrylic paint on Tennessee marble base

15 x 11.5 x 8 inches

38.1 x 29.2 x 20.3 cm

Edition of 2, 1 AP

(KE 15/007.1)



KEITH EDMIER

The Pink Orchid c. 1875-90 (Blc. Laura Bush 'First Lady' AM/AOS)

2015

Dental acrylic and acrylic paint on Tennessee marble base

15 x 11.5 x 8 inches

38.1 x 29.2 x 20.3 cm

Edition of 2, 1 AP

(KE 15/009.1)



KEITH EDMIER

Two Hummingbirds with a Pink Orchid,

c.1875-90 (Lc. Michelle Obama Ctrianaei x

Lc Mini Purple)

2015

Dental acrylic and acrylic paint on Tennessee marble base

16 x 11 x 6 inches

40.6 x 27.9 x 15.2 cm

Edition of 2, 1 AP

(KE 15/010.1)



KEITH EDMIER

Hummingbirds and Orchids, c. 1875-90
(Blc. Hillary Rodham Clinton 'First Lady')

2015

Dental acrylic and acrylic paint on
Tennessee marble base

15 x 11.5 x 8 inches

38.1 x 29.2 x 20.3 cm

Edition of 2, 1 AP

(KE 15/008.1)



MARTIN JOHNSON HEADE

Brazilian Hummingbirds IV

1864 - 65

chromolithograph on paper by M. and N.
Hanhart or J.B. Day and Son, London, with
touches in oil by Heade

12 x 10 inches

30.5 x 25.4 cm

(FP 15/007)