

Petzel

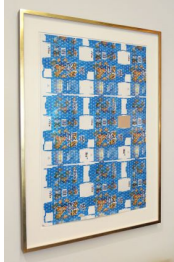
Seth Price

Drawings: Studies for Works 2000-2015

Selected by Achim Hochdörfer

May 14 - July 17, 2015

1



Pixar Activity Kit

2014

Screen print and acrylic polymer on printed cardboard

Unframed: 35.3 x 25.5 inches; 89.7 x 64.8 cm

Framed: 42.8 x 30.75 inches; 108.7 x 78.1 cm

(SPR 15/167)

2



Sherrie, Sherrie, Triple Lee, Joan, Ana, Triple Lee, Martha

2003

Seven enamel paint on shrink-wrapped wooden palette

Dimensions variable

Approximate dimensions of each work: 12 x 15 inches; 30 x 38 cm

(SPR 15/220)

3



NJS Drawings: Ricky Bell & Cult Jam

2002

Diptych: Pen and colored pencil on paper

Unframed: 14 x 11 inches; 35.6 x 27.9 cm -

Each

Framed: 22.06 x 18.7 inches; 56 x 47.4 cm -

Each

(SPR 15/223)

4



Compatibility Mode, Opaque Expression, Finger Touch

2012

Marker and pen on paper in maple frames with gold leaf

Unframed: 10 x 50 inches; 25.4 x 50.8 cm -

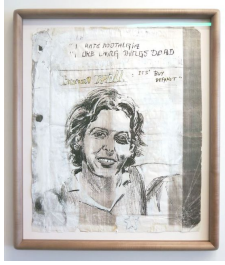
Each

Framed: 17.75 x 14.6 inches; 31.45 x 56.83 cm -

Each

(SPR 15/221)

5



Living Things Dead

1997

Acrylic, Wite-Out, Pen and graphite on photocopy

Unframed: 34 x 27.5 inches; 86.4 x 69.9 cm

Framed: 40 x 33 x 3.5 inches; 101.6 x 83.8 x 8.9 cm

(SPR 15/027)

6



CGI Face Study

2004

Collage with pen, graphite and Ink-jet on paper

Unframed: 18 x 23.5 inches; 45.7 x 59.7 cm

Framed: 25 x 30 x 1.5 inches; 63.5 x 76.2 x 3.8 cm

25 x 30 x 1.5 inches

63.5 x 76.2 x 3.8 cm

(SPR 15/093)

7



Frontispiece for "Fuck Seth Price"

2014

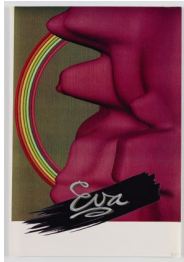
Gouache on paper

Unframed: 12 x 16 inches; 30.5 x 40.6 cm

Framed: 18.75 x 22.5 inches; 47.62 x 57.15 cm

(SPR 15/166)

8



Eva in Ray Tracing

2003

Enamel on Ink-jet print

Unframed: 19 x 13 inches; 48.3 x 33 cm

Framed: 21.6 x 15.5 inches; 54.8 x 39.37 cm

(SPR 15/063)

9



Silhouette Study: Camera

2007

Ink-jet and pen on paper

Unframed: 11 x 8.5 inches; 27.9 x 21.6 cm

Framed: 16.75 x 14 inches; 42.5 x 35.5 cm

(SPR 15/124)

10



Silhouette Study: Doctor's Orders

2007

Ink-jet and pen on paper

Unframed: 12 x 16.25 inches; 30.5 x 41.3 cm

Framed: 18.75 x 22.75 inches; 47.6 x 57.78 cm

(SPR 15/123)

11



Silhouette Study: Office

2008

Ink-jet with enamel paint and marker on paper

Unframed: 10 x 8.5 inches; 25.4 x 21.5 cm

Framed: 15.9 x 13.9 inches; 40.3 x 35.3 cm

(SPR 15/135)

12



Untitled

2008

Pencil and charcoal on paper

Unframed: 9.5 x 12.5 inches; 24.1 x 31.8 cm

Framed: 12.75 x 16 inches; 32.3 x 40.6 cm

(SPR 15/226)

13



Occult Cameo 1 & 2

2001

Marker on paper

Unframed: 12 x 13.125 inches; 30.5 x 33.3 cm -

Each

Framed: 20 x 20.9 inches; 50.8 x 53 cm - Each

(SPR 15/038)

14



Study for Hostage III

2005

Collage with ink-jet and enamel paint on acetate paper

Unframed: 8.75 x 12 x 1.5 inches; 22.2 x 30.5 x 3.8 cm

Framed: 11 x 14.56 x 2.75 inches; 27.9 x 35.56 x 6.9 cm

(SPR 15/111)

15



Study for Hostage VII

2005

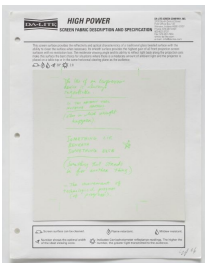
Collage with ink-jet on acetate on paper

Unframed: 11.6 x 13 x 1 inches; 29.5 x 33 x 2.5 cm

Framed: 14.9 x 13.3 x 3 inches; 37.8 x 33.7 x 7.6 cm

(SPR 15/214)

16



High Power/Expressive Device

2006

Screen print on vinyl mounted on paper

Unframed: 11 x 8.5 inches; 27.9 x 21.6 cm

Framed: 12.6 x 10.1 inches; 32 x 25.6 cm

(SPR 15/120)

17



Study for Hostage IV

2005

Collage with ink-jet on acetate, graphite and ink-jet on paper

Unframed: 13.75 x 13 inches; 34.9 x 33 cm

Framed: 16.125 x 15.25 x 1.6 inches; 40.9 x 38.7 x 4 cm

(SPR 15/112)

18



Overtaken Hand

2006

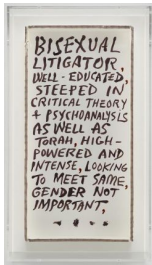
Graphite on paper

Unframed: 24 x 18 inches; 61 x 45.7 cm

Framed: 29.5 x 23.5 x 1 inches; 74.9 x 59.7 x 2.5 cm

(SPR 15/175)

19



Bisexual Litigator

2013

Ink on foamcore in plexi

16 x 8 x 1.5 inches

40.6 x 20.3 x 3.8 cm

(SPR 15/212)

20



Calendar Study: 1994

2003

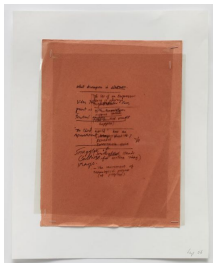
Watercolor, pen, and ink-jet on paper

Unframed: 8.125 x 9.75 inches; 20.6 x 24.8 cm

Framed: 12.8 x 14.25 inches; 32.5 x 36.125 cm

(SPR 15/079)

21



What Decomposes Is Nature

2006

Ink-jet on acetate over construction paper

Unframed: 16 x 12.5 inches; 40.6 x 31.8 cm

(SPR 15/119)

22



Video Game Studies: Cliffside, Entrance,
Garden, Lighthouse

1987

Four MacPaint files, 576 x 720 pixels at 72dpi

Unframed: 11 x 8.5 inches; 27.9 x 21.6 cm -

Each

Framed: 12.8 x 10.75 x 1.25 inches; 32.5 x 10.75

x 3 cm - Each

(SPR 15/230)

23



Untitled

2014

Triptych: Pen and graphite on paper

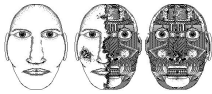
Unframed: 11 x 8.5 inches; 27.9 x 21.6 cm -

Each

Framed: 17.1 x 14.375 inches; 27.9 x 26.5 cm

(SPR 15/222)

24



Video Game Study: Homobot

1986

MacPaint file, 576 x 720 pixels at 72dpi

Unframed: 11 x 8.5 inches; 27.9 x 21.6 cm

Framed: 12.8 x 10.75 x 1.25 inches; 32.5 x 10.75

x 3 cm

(SPR 15/073)

25



Untitled

2008

Pencil and charcoal on paper

Unframed: 24 x 18 inches; 61 x 45.7 cm

Framed: 27.5 x 21.25 inches; 69.8 x 53.9 cm

(SPR 15/229)

26



Untitled

2008

Pencil and charcoal on paper

Unframed: 18 x 24 inches; 45.7 x 61 cm

Framed: 21.25 x 27.25 inches; 53.9 x 69.2 cm

(SPR 15/227)

27



Working Drawing: Themes and Rooms

2005

Collage with pen, graphite, and ink-jet on paper

Unframed: 23.8 x 18 inches; 60.5 x 45.7 cm

Framed: 28 x 21.5 x 1.5 inches; 71.1 x 54.6 x 3.8 cm

28 x 21.5 x 1.5 inches

71.1 x 54.6 x 3.8 cm

(SPR 15/114)

28



Sketch for Hostage I

2005

Collage with Ink-jet on acetate, pen graphite, and tape on card

Unframed: 24 x 18 inches; 61 x 45.7 cm

Framed: 31 x 25 x 1.5 inches; 78.7 x 63.5 x 3.8 cm

(SPR 15/043)

29



Bank Test

2009

UV-cured ink-jet, enamel, and acrylic on thermoformed high-impact polystyrene

Unframed: 33.75 x 24 x 2 inches; 85.7 x 61 x 5.1 cm;

Framed: 38.3 x 28.6 x 3.6 inches; 97.4 x 28.6 x 9.3 cm

(SPR 15/137)

30



Title Screen

2003

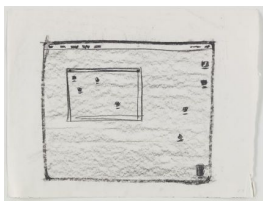
Enamel paint and pen on ink-jet print

Unframed: 19 x 13 inches; 48.3 x 33 cm

Framed: 25.75 x 19.43 inches; 65.4 x 19.43 cm

(SPR 15/076)

31



Desktop

2003

Charcoal on paper

Unframed: 18 x 24 inches; 45.7 x 61 cm

Framed: 23 x 29 x 1.5 inches; 58.4 x 73.7 x 3.8 cm

(SPR 15/080)

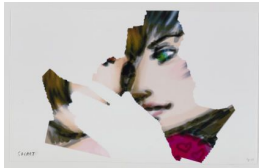
32



My Life II
2014

Acrylic polymer and UV-cured print on wood-fiber veneer in walnut frame
Unframed: 24 x 36 inches; 61 x 91.4
Framed: 24.75 x 36.75 x 1.25 inches; 62.8 x 93.3 x 3.175 cm
(SPR 15/168)

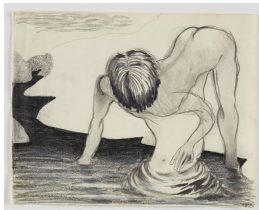
33



Silhouette Study: Secrets
2007

Ink-jet and pen on paper
Unframed: 11.5 x 19 inches; 29.2 x 48.3 cm
Framed: 14.375 x 21.625 inches; 36.5 x 54.8 cm
(SPR 15/122)

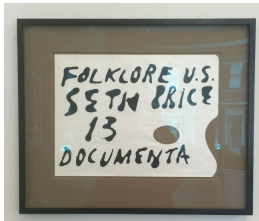
34



Drawing for a Spoken Folk Tale
2002

Pen and Graphite on paper
Unframed: 11 x 13.8 inches; 27.9 x 35.1 cm
Framed: 19.125 x 21.8 inches; 48.5 x 55.3 cm
(SPR 15/050)

35



Folklore Lettering Study
2012

Acrylic on wax-paper palette
Unframed: 12 x 16 inches; 30.4 x 40.6 cm
Framed: 18.6 x 22.5 inches; 47.2 x 57.15 cm
(SPR 15/153)

36



Vacuum Sketch: Lux Retreat
2009

Charcoal on paper
Unframed: 18 x 23.5 inches; 45.7 x 59.6 cm
Framed: 24 x 29 x 1 inches; 61 x 73.7 x 2.5 cm
24 x 29 x 1 inches
61 x 73.7 x 2.5 cm
(SPR 15/138)

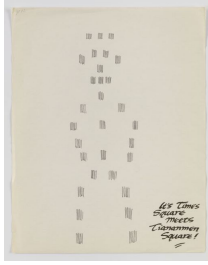
37



Working Drawing: Securities
2012

Giclée print on paper
19 x 13 inches
48.3 x 33 cm
(SPR 14/013)

38



Times Square Meets Tiananmen Square,
Version 1

2002

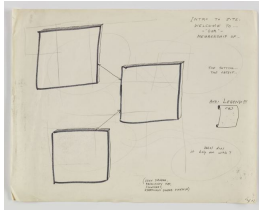
Pen on paper

Unframed: 14 x 11 inches; 35.6 x 27.9 cm

Framed: 22 x 18.8 inches; 55.8 x 47.7 cm

(SPR 15/041)

39



Concept of Home Page

2002

Graphite and Pen on paper

Unframed: 11 x 14 inches; 27.9 x 35.6 cm

Framed: 19.125 x 21.8 inches; 48.5 x 55.37 cm

(SPR 15/051)

40



WPA Landscape Study 1

2003

Pen on paper

Unframed: 11 x 14 inches; 27.9 x 35.6 cm

Framed: 19.125 x 21.8 inches; 48.5 x 55.3 cm

(SPR 15/061)

41



Untitled

1993

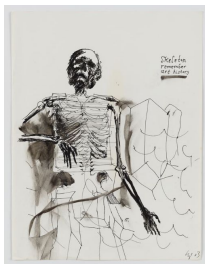
Pen on Paper with collaged photographs

Unframed: 12 x 8.5 inches; 30.5 x 21.6 cm

Framed: 18.75 x 15.1 inches; 47.6 x 38.3 cm

(SPR 15/024)

42



Art History

2003

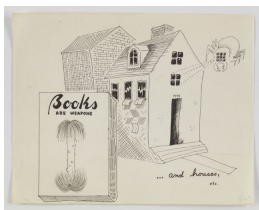
Pen on paper

Unframed: 11 x 8.5 inches; 27.9 x 21.6 cm

Framed: 17.1 x 14.25 inches; 43.4 x 36.1 cm

(SPR 15/090)

43



Books are Weapons

2003

Pen and graphite on paper

Unframed: 11 x 14 inches; 27.9 x 35.6 cm

Framed: 19.125 x 21.8 inches; 48.5 x 55.3 cm

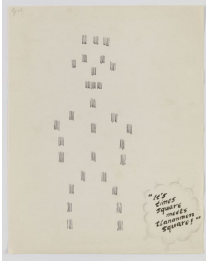
(SPR 15/059)

44



WPA Landscape Study 2
2003
Pen and Graphite on paper
Unframed: 11 x 14 inches; 27.9 x 35.6 cm
Framed: 18.6 x 21.75 inches; 47.2 x 55.2 cm
(SPR 15/062)

45



Times Square Meets Tiananmen Square, Version 2
2002
Pen and graphite on paper
Unframed: 14 x 11 inches; 35.6 x 27.9 cm
Framed: 22 x 18.8 inches; 55.8 x 47.7 cm
(SPR 15/042)

46



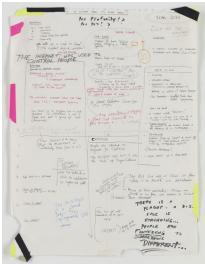
Untitled
2002/2015
Mixed media in metal vitrine
Vitrine: 35 x 28 x 84 inches; 88 x 71.1 x 84 cm
Drawing: 11 x 8.5 inches; 27.9 x 21.5 cm
Photograph: 47 x 25 inches; 119.4 x 63.5 cm
(SPR 15/224)

47



Untitled
2004/20015
Mixed media in metal vitrine
Vitrine: 35 x 28 x 84 inches; 88 x 71.1 x 84 cm
Photograph mounted to foamcore: 25 x 47 inches; 63.5 x 119.4 cm
Inkjet print and pen on paper: 19 x 13 inches; 48.3 x 33 cm
(SPR 15/225)

48



Study for a Christian Novel
2001 - 2002
Pen, graphite, and tape on paper
Unframed: 24 x 18 inches; 61 x 45.7 cm
Framed: 27.5 x 21 x 1.5 inches; 69.9 x 53.3 x 3.8 cm
27.5 x 21 x 1.5 inches
69.9 x 53.3 x 3.8 cm
(SPR 15/034)

49



Calendar Study: Wrecking Crew

2003

Pen, graphite, and charcoal on card

Unframed: 10.9 x 8.5 inches; 27.7 x 21.6 cm

Framed: 17.6 x 15 inches; 44.7 x 38.1 cm

(SPR 15/091)

50



Vacuum Test: Sliced Shrimp

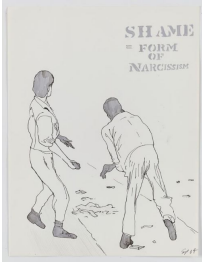
2009

UV-cured ink-jet on vacuum-formed high-impact polystyrene

Unframed: 7.5 x 15.5 inches; 19 x 39.9 cm

(SPR 15/144)

51



Shame

2004

Pen on paper

Unframed: 11 x 8.5 inches; 27.9 x 21.6 cm

Framed: 17 x 14.8 inches; 43.1 x 37.5 cm

(SPR 15/108)

52



Vacuum sketch: Noodles

2009

Pen on paper

Unframed: 8.5 x 11 inches; 21.5 x 27.9 cm

Framed: 11.25 x 13.25 inches; 28.5 x 33.6 cm

(SPR 15/140)

53



Study for Confusion

2003

Vinyl on construction paper

Unframed: 7 x 10 inches; 17.8 x 25.4 cm

Framed: 10.25 x 13 inches; 26 x 33 cm

(SPR 15/078)

54



Untitled Discomfort

2002

Collage with charcoal and pen on paper

Unframed: 18 x 23 inches; 45.7 x 58.4

Framed: 28 x 22.5 x 1 inches; 71.1 x 57.2 x 2.5

cm

(SPR 15/044)

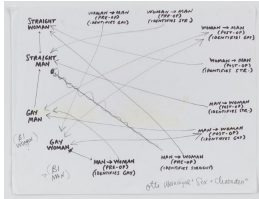
55



Silhouette Study: Adult Female & Infant
2007

Ink-jet on Arches paper
Unframed: 8.5 x 11 inches; 21.5 x 27.9 cm
Framed: 14.25 x 16.5 inches; 36.1 x 41.9 cm
(SPR 15/131)

56



Sex & Character
2001

Pen and graphite on paper
Unframed: 8.5 x 11 inches; 21.6 x 27.9 cm
Framed: 15.1 x 17.5 inches; 38.5 x 44.5
(SPR 15/031)

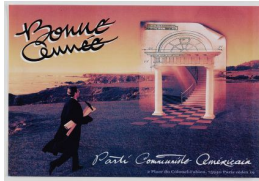
57



New SUV
2003

Ink-jet on paper
Unframed: 12.875 x 19 inches; 33 x 48.3 cm
Framed: 16.06 x 22.125 inches; 40.7 x 56.1 cm
(SPR 15/065)

58



Diploma
2003

Ink-jet on paper
Unframed: 12.875 x 19 inches; 33 x 48.3 cm
Framed: 16.06 x 22.125 inches; 40.7 x 56.1 cm
(SPR 15/064)

59



Vacuum Sketch: Jumbo Shrimp
2009

Pen on paper
Unframed: 8.5 x 11 inches; 21.5 x 27.9 cm
Framed: 13.75 x 15 inches; 34.9 x 38.1 cm
(SPR 15/141)

60



Concept of "Joke"
2002

Graphite on paper
Unframed: 10.75 x 8.125 inches; 27.3 x 20.6 cm
Framed: 17.6 x 14.8 cm; 44.7 x 37.5 cm
(SPR 15/045)

61



Study in Taste for a Video
2000

Airbrush, pen, Wite-Out, acrylic, and tape on paper, wooden frame
Framed: 23 x 29 inches; 58.4 x 73.7 cm
(SPR 15/037)

62



Headless Test

2006

Lithograph on paper

Unframed: 22.25 x 15 inches; 56.5 x 38.1 cm

Framed: 30.5 x 22.5 x 1 inches; 77.5 x 57.2 x 2.5 cm

30.5 x 22.5 x 1 inches

77.5 x 57.2 x 2.5 cm

(SPR 15/121)

63



Industrial Culture: Philosophy

2003

Pen and graphite on paper

Unframed: 11 x 8.5 inches; 27.9 x 21.6 cm

Framed: 17.5 x 14.8 inches; 44.4 x 37.5 cm

(SPR 15/089)

64



Industrial Culture: High Count

2004

Pen on paper

Unframed: 11 x 8.5 inches; 27.9 x 21.6 cm

Framed: 17.5 x 14.8 inches; 44.4 x 37.5 cm

(SPR 15/107)