

Petzel

ROBERT HEINECKEN

January 21 – February 20, 2016



Porno Film Strip #4

1972

Lithographic film
57 x 17 1/4 inches
144.8 x 43.8 cm
signed at bottom
(RH 11/002)



Figure/Foliage #3

1969

Layered Plexiglas and black and white film
transparencies with mirror
5 x 5 x 1 1/4 inches
12.7 x 12.7 x 3.2 cm
(RH 15/152)

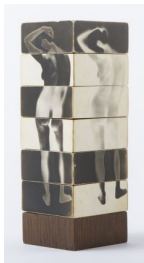


Figure in Six Sections

1965

Gelatin silver prints on wood blocks
8 1/4 x 3 x 3 inches
21 x 7.6 x 7.6 cm
(RH 15/153)



Venus/Mirrored #6

1968

Layered Plexiglas and black and white film
transparencies with mirror
5 3/4 x 5 x 1 1/4 inches
14.6 x 12.7 x 3.2 cm
(RH 15/151)



Different Strokes

1970

Photographic emulsion on canvas

40 x 120 inches

101.6 x 304.8 cm

(RH 13/002)



Transparent Figure

c. 1968

Black and white film transparency over mirror

10 x 8 inches

25.4 x 20.3 cm

(RH 15/150)



Kodak Safety Film/Figure Horizon

1971

Lithographic film

7 parts, each part:

21 x 23 1/2 inches

53.3 x 59.7 cm

(RH 11/179)



Are You Rea

1964 - 1968

Twenty-five gelatin silver prints

Dimensions variable, 5 1/4 x 4 5/8 - 11 3/4 x 9 inches

(13.7 x 11.7 - 29.8 x 22.86 cm)

(RH 15/154)



Kiss Mirrored

1967

Ink transfer from found magazine pages

6 1/8 x 4 3/4 inches

15.6 x 12.1 cm

(RH 16/005)



Blue Chip Stamp Girl

1965

Gelatin silver print

13 5/8 x 8 3/4 inches

34.6 x 22.2 cm

Signed Blue Chip Stamp Girl Heinecken

'65 A.P. #2 (of 5) ovm 13 5/8 x 8 3/4

Pencil lines Pace recto in pencil

(RH 11/069)



Torso in Motion

1964

Silver gelatin print

8 1/2 x 4 1/4 inches

21.6 x 10.8 cm

Signed #2 of 2 Heinecken 64

(RH 16/004)



Daytime T.V. Fantasy

1974

3M-color-in-dye sublimation print

Dimensions:

8 1/2 x 11 inches

21.6 x 27.9 cm

Signed Heinecken 74 16.D recto, signed

Heinecken Dec 74 verso

(RH 15/009)



Daytime T.V. Fantasy/Arm and Hammer

1974-75

3M-color-in-dye sublimation print

Dimensions:

8 1/2 x 11 inches

21.6 x 27.9 cm

Signed Heinecken 74 - 75 9./C recto

(RH 15/007)



Daytime T.V. Fantasy

1974

3M-color-in-dye sublimation print

Dimensions:

8 1/2 x 11 inches

21.6 x 27.9 cm

Signed Heinecken '74 12.C recto, signed

Heinecken Dec '74 verso

(RH 15/008)



Daytime Color TV Fantasy/Liv-a-Snaps

1976

3M color-in-dye sublimation print

19 x 22 3/4 inches

48.3 x 57.8 cm

Signed Daytime Color TV Fantasy/Liv-a-

Snaps B.A.T. Heinecken 1976 recto

(RH 15/141)



Daytime Color TV Fantasy/ET-CA

1976

3M color-in-dye sublimation print

19 x 22 3/4 inches

48.3 x 57.8 cm

Signed Daytime Color TV Fantasy/ET-CA

B.A.T. Heinecken 1976 recto

(RH 15/142)



Daytime Color TV Fantasy/Poly Six

1976

3M color-in-dye sublimation print

19 x 22 3/4 inches

48.3 x 57.8 cm

Signed Daytime Color TV Fantasy/Poly Six

B.A.T. Heinecken 1976 recto

(RH 15/139)



TV Dinner

1970 - 73

Photographic emulsion with hand-coloring
on canvas, and cigarettes

11 x 15 x 2 inches

27.9 x 38.1 x 5.1 cm

(RH 16/006)



As Long As You're Up

1965

Black and white film transparency

23 15/16 x 28 15/16 inches

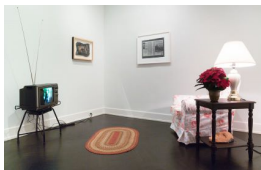
60.8 x 73.5 cm

Signed "As Long as you're up" #3

Heinecken '65 overmat window 11 7/8" x

18 13/16" in pen recto

(RH 11/211)



TV/Time Environment

1970

Functioning television set, film
transparency, chair, rug, plastic plant, and
related magazine

Dimensions variable

(RH 15/149)