

Petzel

Stephen Prina
galesburg, illinois+



galesburg, illinois+

Dorothea Tanning

Born: August 25, 1910, Galesburg, Illinois

Died: January 31, 2012, New York, New York

Xmas A, 1969

Fabric, metal, and wool

Los Angeles County Museum of Art

Purchased with funds provided by the

2010 Collectors Committee, with additional

funds generously provided by Jodie Evans

with Lekha Singh, The Rosenthal Family

Foundation, Peg Yorkin, the Kayne

Foundation, Susan Adelman in honor of the

artist's 100th birthday, Irene Christopher,

Viveca Paulin-Ferrell, American Art

Deaccession Funds, Janice G. Gootkin,

The Eileen F. and Mort H. Singer, Jr. Family

fund in honor of Ilene Susan Fort, and J.

Patrice Marandel (M.2010.36a-b),

2015Photography: Fredrik Nilsen Studio,

Los Angeles, California

2015

Digital print on sattlerplane

77.01 x 29.4 inches

195.6 x 74.68 cm



galesburg, illinois+

Rookwood Pottery 1918 A, 2015

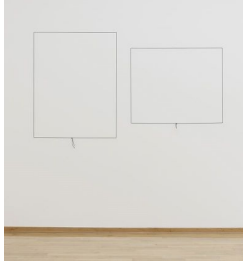
Photography: Joshua White, Los Angeles, California

2015

digital print on Sattlerplane

1 front and 1 back: 76.89 x 3.74 inches

195.3 x 9.5 cm



Untitled, Exquisite Corpse: The Complete
Paintings of Manet

249 of 556

Devant la Glace

(In Front of the Mirror)

1876

S.R. Guggenheim Museum, New York,

2015

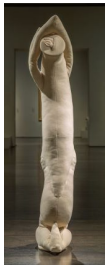
Cord, brass escutcheon pins

Left: 40 x 33.25 inches

101.6 x 84.5 cm

Right: 30.25 x 36.625 inches

76.8 x 93 cm



galesburg, illinois+

Dorothea Tanning

Born: August 25, 1910, Galesburg, Illinois

Died: January 31, 2012, New York, New

York

Xmas B, 1969

Fabric, metal, and wool

Los Angeles County Museum of Art

Purchased with funds provided by the

2010 Collectors Committee, with additional

funds generously provided by Jodie Evans

with Lekha Singh, The Rosenthal Family

Foundation, Peg Yorkin, the Kayne

Foundation, Susan Adelman in honor of the

artist's 100th birthday, Irene Christopher,

Viveca Paulin-Ferrell, American Art

Deaccession Funds, Janice G. Gootkin,

The Eileen F. and Mort H. Singer, Jr. Family

fund in honor of Ilene Susan Fort, and J.

Patrice Marandel (M.2010.36a-b),

2015Photography: Fredrik Nilsen Studio,

Los Angeles, California

2015

Digital print on sattleplane

77.01 x 29.4 inches

195.6 x 74.68 cm



galesburg, illinois+

Rookwood Pottery 1918 B, 2015

Photography: Joshua White, Los Angeles,

California

2015

digital print on Sattleplane

1 left and 1 right: 76.89 x 3.74 inches

195.3 x 9.5 cm



galesburg, illinois+

Dorothea Tanning

Born: August 25, 1910, Galesburg, Illinois

Died: January 31, 2012, New York, New York

Château Mouton Rothschild, 1965, Wine Bottle Label Design

2015

digital print on Sattlerplane

52.95 x 76.85 inches

134.5 x 195.2 cm



Blind No. 27, Twenty-five-foot Ceiling or Lower, [Iridescent Stainless Steel (Coarse) /Iridescent Stainless Steel (Coarse), Iridescent Stainless Steel (Coarse) /Iridescent Silver (Fine)]

2015

acrylic on linen, window blink mechanism, Rookwood Pottery 1921, Festszeltgarniture, fabric

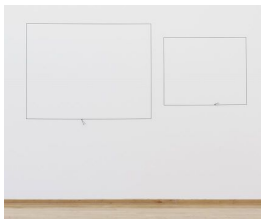
Rookwood Pottery 1921:

One Pair of Rookwood Pottery, Mauve

Boys Bookends, 1921:

7.09 x 6.3 x 5.51 inches

18 x 16 x 14 cm



Untitled, Exquisite Corpse: The Complete Paintings of Manet

246 of 556

Portrait de Marie Lafébure à Cheval

(Portrait of Marie Lafébure on Horseback)

1875

Museu de Arte, São Paulo, 2015

2015

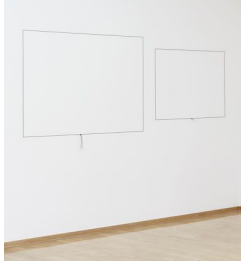
Cord, brass escutcheon pins

left: 39.25 x 49.875 inches

99.7 x 126.7 cm

right: 30.25 x 36.625 inches

76.8 x 93 cm



Untitled, Exquisite Corpse: The Complete Paintings of Manet

250 of 556

Portrait d' Ernest Hoschedé et son fils

(Tabarant refers to 'sa fille')

(Portrait of Ernest Hoschedé and his son)

Private Collection, Caracas, 2015

Cord, brass escutcheon pins

Left: 42 x 55.125 inches

106.7 x 140 cm

Right: 30.25 x 36.625 inches

76.8 x 93 cm



galesburg, illinois+

Rookwood Pottery 1918 D, 2015

Photography: Joshua White, Los Angeles,

California

2015

digital print on Sattlerplane

76.89 x 3.74 inches

195.3 x 9.5 cm

each: 76.89 x 3.74 inches

195.3 x 9.5 cm



galesburg, illinois+

Harbor Lights Supper Club Matchbook, no

date

Compliments of Harbor Lights Supper

Club, Good for One Cocktail, no date

Abraham Lincoln Head Penny, 2014

copper, zinc

This penny was acquired in change

returned in a transaction at a drug store in

Galesburg, Illinois, sometime between July

9 and July 16, 2014

2015

Cardstock, staple, Metal token, copper,

zinc, wood, glass



Exquisite Corpse: The Complete Paintings
of Manet

246 of 556

Portrait de Marie Lafébure à Cheval
(Portrait of Marie Lafébure on Horseback)
1875

Museu de Arte, Sao Paolo

July 18, 2015

2015

ink wash on rag, barrier paper and offset
lithography on paper

Left: 35.43 x 45.87 inches

90 x 116.5 cm

Right: 25.98 x 32.68 inches

66 x 83 cm

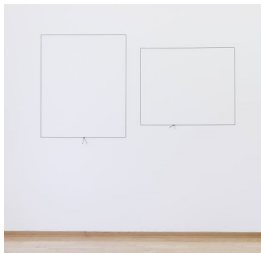
+

PUSH COMES TO LOVE, Untitled

1999 - 2015

the entire contents of a can of enamel
spray paint

Dimensions variable



Untitled, Exquisite Corpse: The Complete
Paintings of Manet

247 of 556

Sultane (Jeune Femme en Costume
Oriental)
(Sultana) (Young Woman in Eastern Dress)
1876?

Bührle Collection, Zürich, 2015

2015

Cord, brass escutcheon pins

Left: 42 x 33.25 inches

106.7 x 84.5 cm

Right: 30.25 x 36.625 inches

76.8 x 93 cm



Blind No. 28, Twenty-five-foot Ceiling or
Lower,

PANTONE® 7666CP/PANTONE®

7666CP,

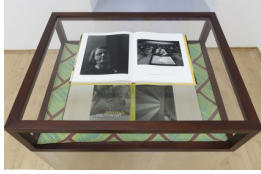
PANTONE® 7666CP/PANTONE®

5405CP,

PANTONE® 625CP/PANTONE® 5757CP

2015

acrylic on linen, window blind mechanism,
Rookwood Pottery 1920, Festzelgarnitur,
fabric



galesburg, illinois+

Brookman, Philip, and Arnold Newman.
2000. Arnold Newman. Köln: Benedikt
Taschen Verlag GmbH.

2015

fabric, mirror, glass, wood, book
13.19 x 11.02 x 1.38 inches
33.5 x 28 x 3.5 cm



galesburg, illinois+

Arnold Newman
Marilyn Monroe and Carl Sandburg,
Beverly Hills California, January 20, 1962

2015

Gelatin Silver print, unsigned, state
stamped, fabric, wood
25.43 x 29.69 inches
64.6 x 75.4 cm
with secondary frame



galesburg, illinois+

John Cage, Knox College, Galesburg,
Illinois, April 1983
Photographer unknown

All documentation of John Cage's visit to
Knox College in February 1972 — including
photographic documentation and an audio
recording of his talk — is missing from the
Knox College Library. This photograph
holds the place of the earlier event.

2015

Digital C-print on Fuji DpII Gloss Paper,
fabric, wood
26.93 x 23.78 inches
68.4 x 60.4 cm
with secondary frame



galesburg, illinois+

Carl Sandburg,

Born: January 6, 1878, Galesburg, Illinois

Died: July 22, 1967, Flat Rock, North
Carolina

Sandburg, Carl. 1926. Abraham Lincoln:
The Prairie Years, Volumes I and II. New
York: Harcourt, Brace & World, Inc.

Sandburg, Carl. 1939. Abraham Lincoln:
The War Years, Volumes I-IV. New York:
Harcourt, Brace & World, Inc.

Rookwood Pottery, 1918

Brookman, Philip, and Arnold Newman.

2000. Arnold Newman. Köln: Benedikt
Taschen Verlag GmbH: 163 and 164,
laminated

The second volume is marked at page 147
where Sandburg begins to describe the
fifth Lincoln—Douglas Debate that took
place on the campus of Knox College in
Galesburg, Illinois, on October 7, 1858.

2015

fabric, books, glazed ceramic, wood

overall dimensions: 9.45 x 10.63 x 6.3
inches

24 x 27 x 16 cm

One pair of Rookwood Pottery, Blue
Elephant Bookends:

5.51 x 6.69 x 3.94 inches

14 x 17 x 10 cm



[galesburg, illinois+](#)

[Dorothea Tanning](#)

[Born: August 25, 1910, Galesburg, Illinois](#)

[Died: January 31, 2012, New York, New York](#)

[Xmas C, 1969](#)

[Fabric, metal, and wool](#)

[Los Angeles County Museum of Art](#)

[Purchased with funds provided by the 2010 Collectors Committee, with additional funds generously provided by Jodie Evans with Lekha Singh, The Rosenthal Family Foundation, Peg Yorkin, the Kayne Foundation, Susan Adelman in honor of the artist's 100th birthday, Irene Christopher, Viveca Paulin-Ferrell, American Art Deaccession Funds, Janice G. Gootkin, The Eileen F. and Mort H. Singer, Jr. Family fund in honor of Ilene Susan Fort, and J. Patrice Marandel \(M.2010.36a-b\), 2015Photography: Fredrik Nilsen Studio, Los Angeles, California](#)

2015

Digital print on sattleplane

77.01 x 29.4 inches

195.6 x 74.68 cm



[galesburg, illinois+](#)

[Rookwood Pottery 1918 C, 2015](#)

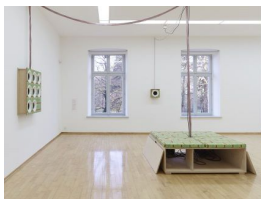
[Photography: Joshua White, Los Angeles, California](#)

2015

digital print on Sattleplane

1 front and 1 back: 76.89 x 3.74 inches

195.3 x 9.5 cm

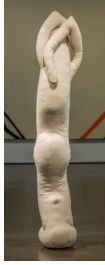


[galesburg, illinois+](#)

[Ode to Galesburg](#)

2015

crate, 4 cushions, 5 Samson SA200 Power Amplifiers, 1 power distributor, 1 playback unit Allan & Heath, 8 Boston Acoustics HSi-270 In-ceiling speakers built in a wooden box, 1 Boston Acoustics HSi-270 In-ceiling speaker built in a wooden box, cables



galesburg, illinois+

Dorothea Tanning

Born: August 25, 1910, Galesburg, Illinois

Died: January 31, 2012, New York, New York

Xmas D, 1969

Fabric, metal, and wool

Los Angeles County Museum of Art

Purchased with funds provided by the 2010 Collectors Committee, with additional funds generously provided by Jodie Evans

with Lekha Singh, The Rosenthal Family Foundation, Peg Yorkin, the Kayne

Foundation, Susan Adelman in honor of the artist's 100th birthday, Irene Christopher,

Viveca Paulin-Ferrell, American Art

Deaccession Funds, Janice G. Gootkin,

The Eileen F. and Mort H. Singer, Jr. Family

fund in honor of Ilene Susan Fort, and J. Patrice Marandel (M.2010.36a-b),

2015Photography: Fredrik Nilsen Studio,

Los Angeles, California

2015

Digital print on sattleplane

77.01 x 29.4 inches

195.6 x 74.68 cm



Blind No. 28, Twenty-five-foot Ceiling or Lower,

PANTONE® 7666CP/PANTONE®

7666CP,

PANTONE® 7666CP/PANTONE®

5405CP,

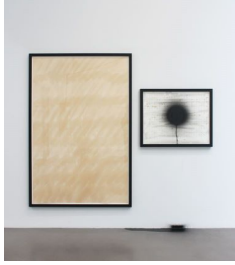
PANTONE® 625CP/PANTONE® 5757CP

2015

acrylic on linen, window blind mechanism,

Rookwood Pottery 1920, Festzelgarnitur,

fabric



Exquisite Corpse: The Complete Paintings
of Manet

248 of 556

Parisienne (Robe à Train)

Parisienne (Dress with a Train)

1875?

Nationalmuseum, Stockholm

July 18, 2015

ink wash on rag, barrier paper and offset
lithography on paper

left: 75.98 x 49.21 inches

193 x 125 cm

right: 25.98 x 32.68 inches

66 x 83 cm

+

PUSH COMES TO LOVE, Untitled

1999 - 2016

the entire contents of a can of enamel
spray paint

Dimensions variable



Exquisite Corpse: The Complete Paintings
of Manet

249 of 556

Devant la Glace

(In Front of the Mirror)

1876

S.R. Guggenheim Museum, New York

July 18, 2015

ink wash on rag, barrier paper and offset
lithography on paper

left: 36.22 x 29.33 inches

92 x 74.5 cm

right: 25.98 x 32.68 inches

66 x 83 cm



Exquisite Corpse: The Complete Paintings of Manet

250 of 556

Portrait d'Ernest Hoschedé et con fils

(Tabarant refers to 'sa fille')

(Portrait of Ernest Hoschedé and his son)

1876

Private Collection Caracas

July 18, 2015

2015

ink wash on rag, barrier paper and offset lithography on paper

left: 54.92 x 41.89 inches

139.5 x 106.4 cm

right: 25.98 x 32.68 inches

66 x 83 cm



Harbor Lights Supper Club, Galesburg,

Illinois, 1947 - 1986, former site, 2015

Photography: Foley Photo Studio,

Galesburg, Illinois

2016

Digital print on vinyl banner

206 x 385 inches

523.2 x 977.9 cm



Blind No. 29, Twenty-five-foot Ceiling or Lower,

PANTONE® 5405CP/PANTONE®

5405CP

PANTONE® 5405CP/PANTONE® 625CP,

PANTONE® 7666CP/PANTONE®

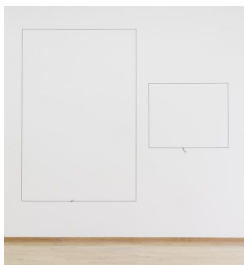
5757CP

2015

acrylic on linen, window blind mechanism,

Rookwood Pottery 1929, Festzelgarnitur,

fabric



Untitled, Exquisite Corpse: The Complete Paintings of Manet

248 of 556

Parisienne (Robe à Train)

(Parisienne) (Dress with a Train)

1875? Nationalmuseum, Stockholm, 2015

2015

Cord, brass escutcheon pins

Left: 78.875 x 53.25 inches

200.3 x 135.3 cm

Right: 30.25 x 36.625 inches

76.8 x 93 cm



galesburg, illinois+
bougainvilleas
2016
24 bougainvillea
dimensions variable