

Petzel

Jorge Pardo

Eccentric Reflexivity: 1988 - 1994

February 28 - April 20, 2019



Untitled (Pinhole Camera)

1988

Plastic garden owl

17 x 10 x 10 inches

43.2 x 25.4 x 25.4 cm

(JP 18/021)



Fuck Me Shoes

1990

wood, leather, rubber, oil paint

Two Parts:

8 x 2.5 x 4 inches; 20.3 x 1.3 x 10.2 cm -
each

(JP 91/008)



Ladder

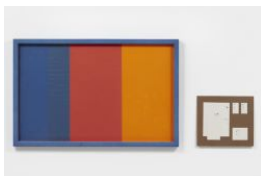
1989

fir wood, bubinga, redwood, veneered
particle board, dark Creosote bolts, Danish
oil

45 x 14 x 19 inches

114.3 x 35.6 x 48.3 cm

(JP 89/001)



The K-Mart Painting

1991

Chromatec, Canson paper, Standard
Brand Premium latex flat paint, plexiglass

34.5 x 76 inches (overall)

87.6 x 193 cm

(JP 90/006)



Adjusted Wrenches

1990

steel

set of 5; variable dimensions

(JP 90/005)



Refrigerator

1993

refrigerator doors repainted a baby blue

61.5 x 24.5 x 28 inches

156.2 x 62.2 x 71.1 cm

(JP 94/013)



Splicer

1989

metal, lacquer, crinkle finish, gold leaf

3.5 x 3.5 x 5.5 inches

8.9 x 8.9 x 14 cm

(JP 89/003)



Get made/ Con esta miel que te estoy
poniendo te endulzo para que me
endulces/resuevas el problema que tengo

1993

wood, paint, honey, paper, Henry
Waxman, Anita

23 x 23 x .2 inches

58.4 x 58.4 x .5 cm

(JP 94/016)



Drawing

1990

Airplane Model (Balsa Wood, glue,
hardware)

53 x 46 inches

134.6 x 116.8 cm

(JP 90/004)



Shiny Tables from J. Crew (Costa Mesa)

/Piece for Fandra from Fandra

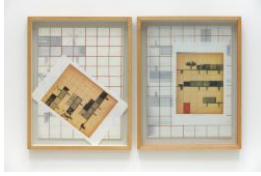
1991

3/4" paintable plywood from Room 107 of
the Art Center, plexiglass, double stick,
Blum knock-down hardware

45 x 30 x 14.5 inches

114.3 x 76.2 x 36.8 cm

(JP 91/001)



Homage to Herbert Matter

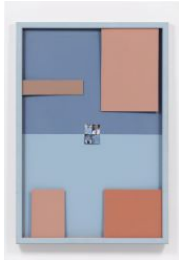
1990

two drawings on paper

27 x 21 x 1.75 inches (each)

68.6 x 53.3 x 4.4 cm

(JP 90/007)



Painting for Page 24 of the J. Crew Catalogue (Spring)

1991

house paint, mixed media

60 x 40 inches

152.4 x 101.6 cm

(JP 91/015)



Ten People Ten Books

1994

cloth cover book with vellum architectural

plan and cut vellum parts

10.125 x 7.25 inches; 25.7 x 18.4 cm

(Dimensions variable)

(JP 94/022)



Untitled (Pinhole Camera Owl Photograph)

1988

photograph

14 x 12.5 x 2 inches (framed)

35.6 x 31.8 x 5.1 cm

(JP 18/022)



Untitled (1/4 Scale Counter Bank of America, Altadena, California)

1990

plywood, formica, pine

9.5 x 50.5 x 9.5 inches

24.1 x 128.3 x 24.1 cm

(JP 17/028)



Untitled

1993

wood, glass

31.5 x 78.74 x 45.28 inches

80 x 200 x 115 cm

overall dimensions variable

(JP 17/029)



White People are Devils (Jan Tschichold:
Cinema poster, Typography, 1928)

1991

Xerox, Color Tag and contact cement

8 x 50 inches

20.3 x 127 cm

(JP 91/002)