

# METRO PICTURES

519 WEST 24TH STREET NEW YORK 10011 T: 212 206 7100 F: 212 337 0070 GALLERY@METROPICTURESGALLERY.COM

## Eric Wesley

14 December – 1 February, 2003

### ***Gallery 1 (clockwise from entrance)***

#### U-Haul (Cali Love)

2002

aluminum, steel, wood, fiberglass, reflectors

78 x 120 x 70

MP#8



### ***Gallery 2 (clockwise from entrance)***

#### Birth Box

2002

mixed media

26 inch cube

MP#5



#### Grow Box

2002

mixed media

8 foot cube

MP#6

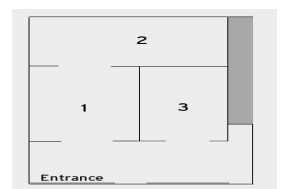
#### Death Box

2002

mixed media

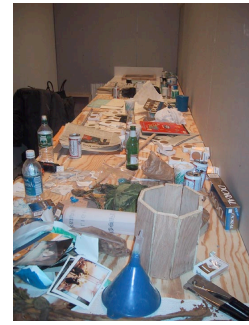
26 inch cube

MP#7



Untitled

2002  
mixed media  
approximately - 8' x 6' 1" x 20'  
MP# 21



**Gallery 3 (clockwise from entrance)**

Proto-type for Planter, ed. 10

2002  
to be cast in concrete, soil, plant  
27 x 25 x 25 inches



**Reception**

Proto-type for Ashtray, ed. 10

2002  
to be cast in plastic  
5 x 7 x 2 inches



**Upstairs Gallery (clockwise from entrance)**

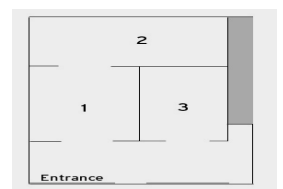
Light

2002  
printed on canvas with acrylic wash  
18 x 30 inches  
MP# 10



Medium

2002  
printed on canvas with acrylic wash  
18 x 30 inches  
MP# 14



Full  
2002  
printed on canvas with acrylic wash  
18 x 30 inches  
MP# 15



Untitled  
2002  
print on canvas with oil  
48 x 140 inches  
MP# 9



Untitled  
2002  
mixed media collage  
40 x 69 inches assembled  
MP# D-13



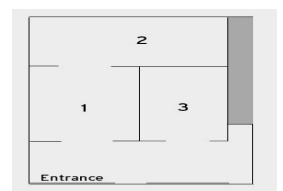
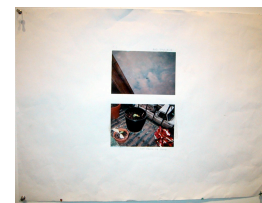
Untitled  
2001  
5 photos on paper  
24 x 17-3/4 inches  
MP# D-7



Untitled  
2001  
6 photos on paper  
24 x 17-7/8 inches  
MP# D-6



Untitled  
2001  
2 photos and pencil on paper  
17-7/8 x 24 inches  
MP# D-5



Untitled  
2001  
3 photos and pencil on paper  
24 x 17-3/4 inches  
MP# D-8



### **Upstairs Gallery Entrance**

Untitled  
2002  
spray paint on fiberglass board  
31 x 16 inches  
MP# 13



### **Editions**

Untitled  
2002  
cardstock, foil  
3-1/2 x 2-1/4 x 1 inches  
Unlimited edition  
MP# 18



Untitled  
2002  
cardstock, newspaper  
6 x 12-1/2 x 3 inches  
Unlimited edition  
MP# 19

Untitled  
2002  
cast plastic  
6 x 12 inches  
Edition 10  
MP# 16

