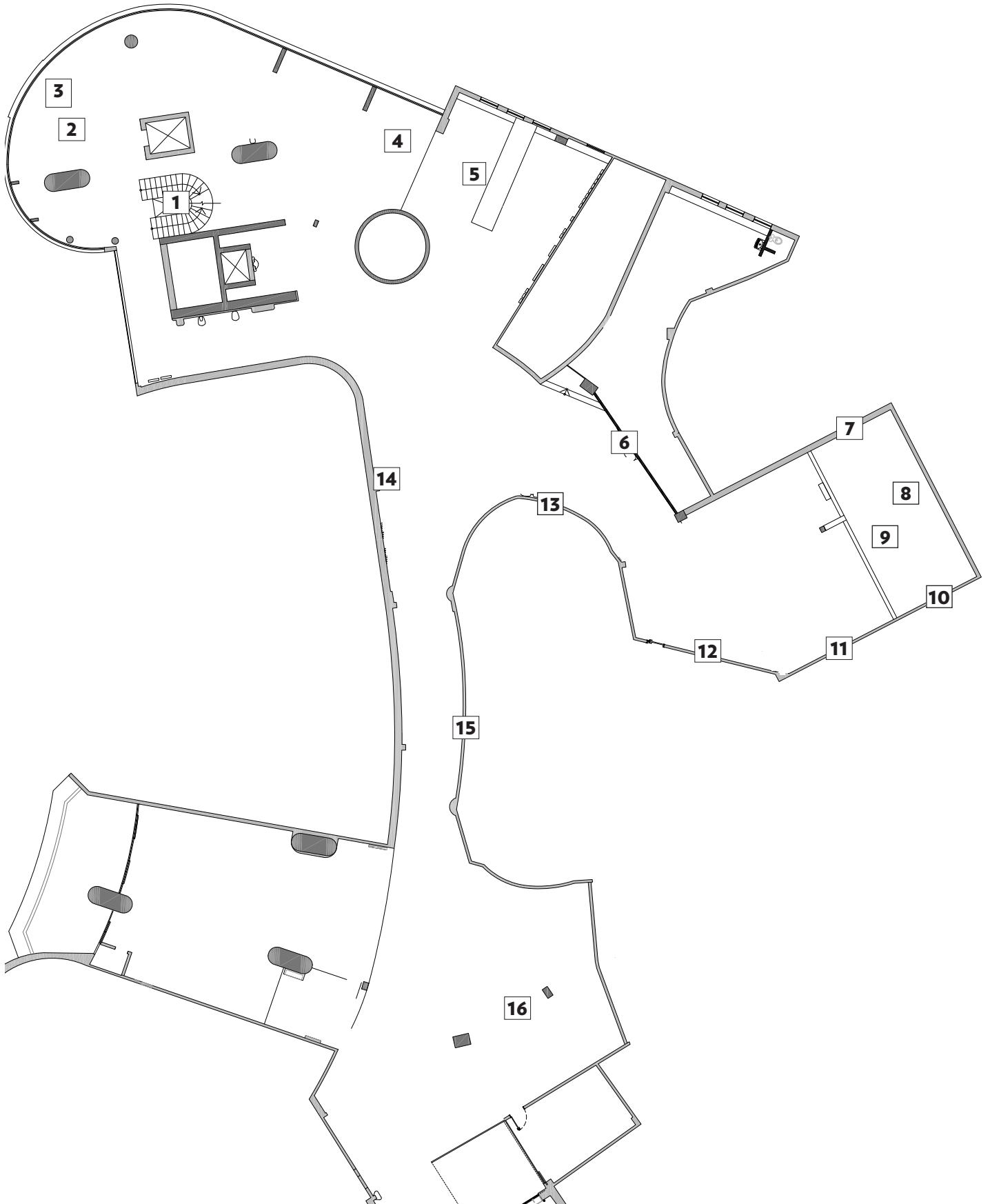


# I M A N N A M



**1. Trans-verses, 2012 (17'41")**

Anna Maria Maiolino  
sound installation

**2. Snail, 2018**

Laura Lima  
installation

**3. The invisibles (number 11), 2017**

Ana Linnemann  
engine, electronic mechanisms, wood

**4. The invisibles (number 12), 2018**

Ana Linnemann  
electronic mechanisms, socket, clock, switch

**5. The studio's table, 2018**

Ana Linnemann  
plywood, hinges and diverse objects such as:

The artist 2, 2017  
engine, electronic mechanism

The artist 3, 2018  
engine, electronic mechanism

Dead-end-painting 1, 2017  
chassis, canvas, acrylic paint, hinge

Dead-end-painting 2, 2017  
chassis, canvas, acrylic paint, hinge

The world as an orange (pencil and book), 2018  
pencil and book

The world as an orange (pencil), 2018  
pencil

The world as an orange (cup), 2018  
cup

q level/3 levels, 2011  
glass, water

What I learnt from geometry 1, 2017  
book, pencil

What I learnt from geometry 2, 2018  
book, pencil

The world as an orange (lamp), 2018  
books, pencil

**6. Anna Maria Maiolino's films, left to right:**

- **08/07/2013, from the series Presentations, 2013 (6')**

- **LOG, 2008 - 2013 (2')**

- **+&-, 1999 (6'05")**  
filmed in H8 camera and encoded in video

- **A Time (once), 2009 - 2012 (11'10")**

- **A moment, please, 1999 - 2004 (4'20")**  
filmed in H8 camera and encoded in video

- **Look That - New York! New York!, 1982 - 2012 (5'13")**

**7. It is, 2010 (5'13")**

Anna Maria Maiolino  
video

**8. A day, 1976-2015 (4')**

Anna Maria Maiolino  
super-8 encoded in video

**9. In-Out (Antropophagy), 1973 - 1974 (8'27") and X, 1974 (3'12")**

Anna Maria Maiolino  
super-8 encoded in video

**10. Two beats, 2010 - 2017**

Anna Maria Maiolino  
table, benches, lamps and sound installation  
180x65x74cm

Alice, 2017 (4'48")  
Voice: Sandra Lessa

Adrift, 2017 (5'10")  
Voice: Verônica Gerchman

**11. To the four winds, 2001-2009 (4'34")**

Anna Maria Maiolino  
filmed in H8 camera encoded in video

**12. I am I, 2012 (13')**

Anna Maria Maiolino  
video

**13. Untitled, from the series A Life Line, 1981**

Anna Maria Maiolino  
chairs and eggs  
Variable dimensions

**14. Disabled room, 2018**

Laura Lima  
installation, Pivô's team (Kimie Noda and Leandro Muniz)  
Artist's collection/ Gallery Luisa Strina

**15. The hollow men, 2018 (appropriation of T.S. Elliot's poem)**

Anna Maria Maiolino  
vynil plotter

**16. Exception state, 2009 - 2012 (6'22")**

Anna Maria Maiolino  
wooden box and sound  
210x90x90cm

\* Graphic installation on ground floor by Estanislao Jiménez