

## Press Release

March 4, 2019

Press materials: <https://bit.ly/2EEte3f>

Contact: Hyo Gyoung Jeon (curator)

[press@artsonje.org](mailto:press@artsonje.org)

T. +82-2-733-8944

**Lee Kit**

### *Resonance of a sad smile*

March 1 - April 28, 2019

Curated by Haeju Kim (Deputy Director, Art Sonje Center)

Assisted by Hyo Gyoung Jeon (Curator, Art Sonje Center)

Organized by Art Sonje Center

Supported by Arts Council Korea, ISU Group



Lee Kit, *Resonance of a sad smile*, 2019. Image courtesy the artist.

Art Sonje Center proudly presents *Resonance of a sad smile*, a solo exhibition by Lee Kit, from March 1 to April 28, 2019.

Born in Hong Kong in 1978, Lee currently lives and works in Taipei. Trained in traditional painting, he has since been involved in installation work combining video, drawing, light, and popular music. Lee was a representative artist at the 2013 Venice Biennale's Hong Kong Pavilion and works internationally, having held solo exhibitions at Tokyo's Hara Museum of Contemporary (2018), OCAT Shenzhen (2018), SMAK (the Municipal Museum of Contemporary Art - Ghent, 2017), Walker Art Center (2016), etc.

With the exhibition *Resonance of a sad smile*, Lee Kit uses installation pieces that combine video, painting, sunlight, and music to show ordinary experiences like walking, breathing, listening to music, or talking to someone – and the emotions that derive from them. His work changes with his experience and observation of the city in which the exhibition is set, such that each new exhibition is a mixture of different pieces and compositions. To prepare for this exhibition, the artist visited Seoul several times over the past two years, walking around each day to observe the city and the daily routines of the people who live there. Imbued into his work, Lee's observations and experiences of Seoul awaken resonance and sympathy within the viewer.

Lee's artwork makes use of ordinary everyday objects such as fabric and plastic boxes. What is projected here is the artist's perspective: respecting these ordinary items as they are, rather than trying to elevate them to the realm of the "artistic." Positioned as though to suggest they have only recently been in use, the objects create at the same time images that are unfamiliar and new. Lee joins these everyday items to text, thus transporting them into a kind of psychological situation. As though filling a canvas, he builds spaces as he partitions and pieces them together with light and color, letters and emotions. Margins, paintings with outlines so faint they appear undefined, video installations, light colors and shadows – these are the characteristic elements of Lee's work.

At first glance, Lee's work appears mild, with its everyday items, song lyrics, and colors that are close to transparent light. Yet a closer look shows them also to be sharp and dangerous – a quality that ties in with the artist's critical message about the inherent tensions and contradictions of the everyday. Hong Kong-based researcher Anthony Yung writes that Lee's work "allows us to discover both abundance, emptiness, precision and imprecision, opaqueness and transparency, density and openness, truth and fallacy, specificity and universality, apology and anger, intention and accident." The artwork of Lee Kit reflects a state that is contradictory and complex, much like the emotional changes we typically experience. We look forward to viewers taking sufficient time to walk about and pause periodically in the shadow-like spaces of the city Lee has created with this exhibition.

## ■ About the Artist

Born in 1978, Hong Kong, Lee Kit currently uses Taipei as his base, but often resides and creates art at different places within Asia, America and Europe. Originating in his interest in everyday experiences and emotions, in his installations, Lee makes frequent use of ordinary daily items. His installation appears serene and quiet at first glance, yet it also represents a critical statement on the inherent tensions and contradictions of modern life. His work is actively exhibited at museums, galleries and other art spaces. In 2013, he represented Hong Kong at the 55th Venice Biennale, and had solo exhibitions at the Walker Art Center (2016, Minneapolis, USA), S.M.A.K. (2018, Ghent, Belgium), Hara Museum of Art (2018, Tokyo, Japan) and etc.

## ■ Outlines: Resonance of a sad smile

<b>Artist</b>	Lee Kit
<b>Dates</b>	March 1–April 28, 2019
<b>Venues</b>	Art Sonje Center 2, 3F
<b>Curated by</b>	Haeju Kim (Deputy Director, Art Sonje Center)
<b>Assisted by</b>	Hyo Gyoung Jeon (Curator, Art Sonje Center)
<b>Organized by</b>	Art Sonje Center
<b>Supported by</b>	Arts Council Korea, ISU Group

<b>Hours</b>	Tuesday–Sunday 12–7pm
<b>Admissions</b>	General 5,000 KRW Students 3,000 KRW
<b>Contact</b>	+82-2-733-8944

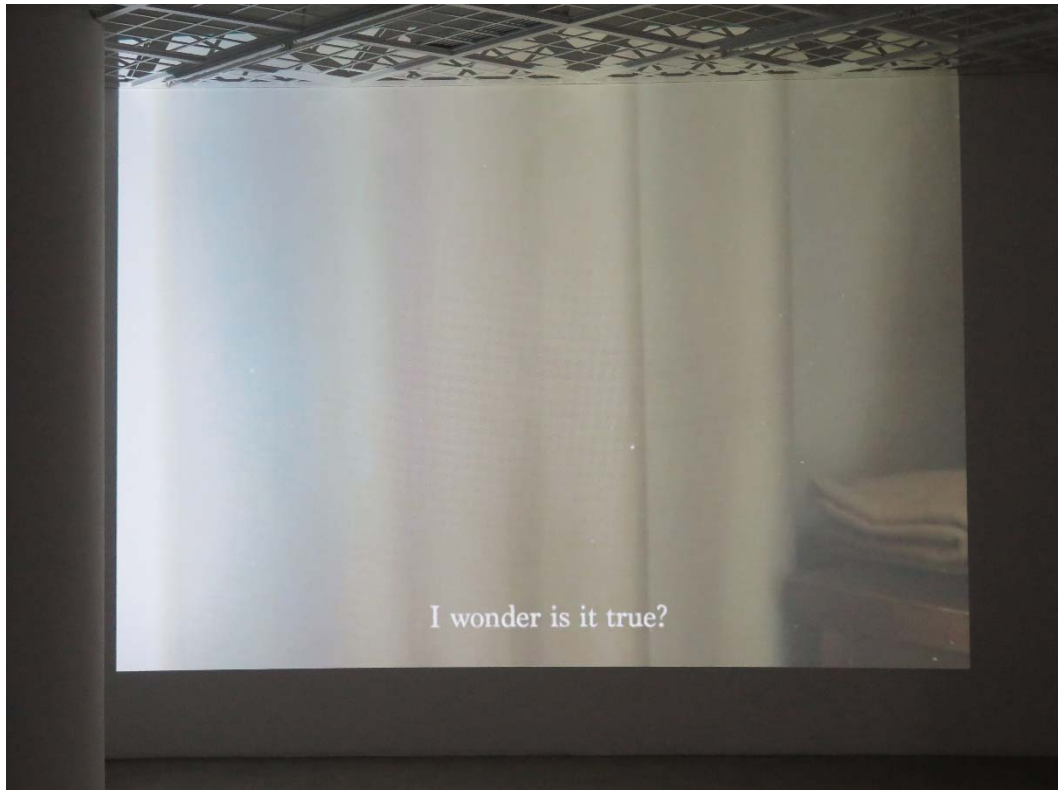
■ Works and installation views



Lee Kit, *Untitled (about chewing)*, 2019, looped video, dimensions variable.



Lee Kit, *Resonance of a sad smile*, 2019, installation view.



Lee Kit, *A man said*, 2018, looped video, dimensions variable.



Lee Kit, *Resonance of a sad smile*, 2019, installation view.