

Claudia Wieser: Poems of the Right Angle
September 11–November 18, 2010



Claudia Wieser, *Untitled*, 2010.
Colored pencil and gold leaf on
colored paper, 8 1/4 x 11 11/16
inches (21 x 29.7 cm). Courtesy of
the artist and Sies + Höke.

Drawing Room

Opening Reception: Friday, September 10, 6:00–8:00pm

Press Preview: Friday, September 10, 5:00–6:00pm

For further information and images, please contact
Emily Gaynor *Public Relations and Marketing Officer*
212 219 2166 x119 | egaynor@drawingcenter.org

June 17, 2010

The Drawing Center will present the first solo museum exhibition in North America of work by the Berlin-based artist, Claudia Wieser (b. 1973, Freilassing, Germany). On view in the Drawing Room from September 11 until November 18, 2010, *Claudia Wieser: Poems of the Right Angle* will feature a site-specific installation of optical and spatial illusions that foregrounds Wieser's distinctive approach to abstraction.

Wieser's work marks the experiential and intangible through precise geometries imbued with layers of spiritual, psychic, and phenomenal meaning. For her installation in the Drawing Room, Wieser will juxtapose a nine-foot prismatic wall relief constructed of glazed ceramic tile and mirrored facets with a new series of line drawings in colored pencil on paper. A geometrically patterned wallpaper, produced by scanning and enlarging handmade translucent paper collages, will serve as a backdrop for the drawings and mirror, creating the dizzying sensation of immersion in a Futurist painting.

Among other recent and historical artistic influences, Wieser is largely inspired by Formalism, Bauhaus color theory, and Le Corbusier's 'Promenade Architecturale' walk-throughs. She gathers these diverse aesthetic approaches into an archive of universally resonant forms that engender associations with light, atmosphere, and natural phenomena. Testing the limits of traditional line drawing by creating seductive interplays between light and shadow, two and three dimensions, and tone and texture, Wieser's art leads the viewer into contemplative spaces where the primacy of mark-making and viewing are fused. This exhibition is curated by Assistant Curator, Joanna Kleinberg.

ABOUT THE ARTIST

Claudia Wieser was born in Freilassing, Germany, in 1973 and currently lives and works in Berlin. She studied at the Akademie der Bildenden Künste in Munich from 1997–2003, and has exhibited in Europe at venues including *Raum für Raum*, K21 Ständehaus, Düsseldorf, Germany (2010); Oldenburger Kunstverein, Oldenburg, Germany (2009); Projectspace 176, London, UK (2008); Städtische Galerie, Waldkraiburg, Germany (2006); Kunstverein Munich, Germany (2003); as well as in the U.S. at a group exhibition at the Contemporary Art Museum, St. Louis, Missouri (2008). Her work will be exhibited at Kunstmuseum Stuttgart, Germany (in cooperation with Kunstmuseum Wolfsburg) in 2011.

PUBLIC PROGRAMS

Saturday, September 11, 2:00pm

Exhibition walk-through with Claudia Wieser

Thursday, October 14, 6:30pm

Concert featuring cellists Rubin Kodheli and Eleanor Norton. Rubin Kodheli, electric cello, and Eleanor Norton, acoustic cello, explore the bounds of abstraction through Kodheli's original instrumental compositions of bold modulations and textured sonorities for the cello.

Rubin Kodheli began playing the cello at age seven and graduated from the Juilliard School of Music in 2001. Rubin has performed, recorded, and toured with Dave Douglas's Nomad Ensemble, Henry Threadgill's Zooid, and Makoto Ozone's New Spirit. He has been a soloist with the Electronic Music Foundation of New York since 2002. Other credits include recording collaborations with Roberta Flack, Wyclef Jean, Norah Jones, and Vampire Weekend. Rubin continues to compose for his avant-garde rock band Blues in Space, as well as extensively for acclaimed feature films and television, including the Oscar nominated film *Precious* and the HBO series *True Blood*. Kodheli was born in Tirana, Albania, and lives and works in New York City.

Eleanor Norton graduated from the Peabody Institute of the Johns Hopkins University in 2002, where she served as principal cellist of the Peabody Symphony Orchestra. An active chamber musician, Eleanor has participated in many ensembles nationally, including the Bowdoin Summer Music Festival, the Aspen Music School, the Encore School for Strings, and the Round Top

Festival. She regularly performs with the Artemis Chamber Ensemble in New York and the Metropolitan Chamber Orchestra. Norton lives and works in New York City.

PUBLICATION

To accompany the exhibition, The Drawing Center will produce a publication approximately 48 pages in length featuring full-color plates and exhibition installation shots with an essay by exhibition curator Joanna Kleinberg. Available in October.

HOURS & ACCESSIBILITY

Hours are Wednesday, 12pm–6pm, Thursday, 12pm–8pm, and Friday–Sunday, 12pm–6pm (closed Mondays and Tuesdays). The Drawing Center is wheelchair accessible.

CREDITS

Claudia Wieser: Poems of the Right Angle is made possible in part by members of the Drawing Room, a patron circle founded to support innovative exhibitions presented in The Drawing Center's project gallery: Devon Dikeou and Fernando Troya, Judith Levinson Oppenheimer, Elizabeth R. Miller and James G. Dinan, The Speyer Family Foundation, Inc., Louisa Stude Sarofim, Deborah F. Stiles, and Ann Tenenbaum and Thomas H. Lee.

MISSION STATEMENT

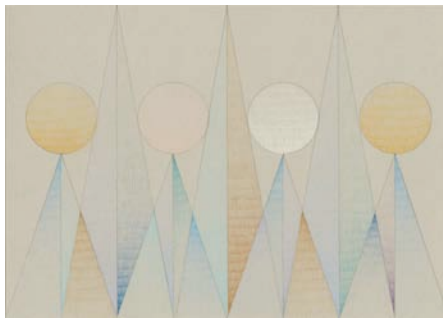
The Drawing Center is the only not-for-profit fine arts institution in the country to focus solely on the exhibition of drawings, both historical and contemporary. It was established in 1977 to provide opportunities for emerging and under-recognized artists; to demonstrate the significance and diversity of drawings throughout history; and to stimulate public dialogue on issues of art and culture.

Claudia Wieser: Poems of the Right Angle

September 11–November 18, 2010
Drawing Room

Images Available for Reproduction

For further information and images, please contact:
Emily Gaynor *Public Relations and Marketing Officer*
212 219 2166 x119 | egaynor@drawingcenter.org



CW8: Claudia Wieser, *Untitled*, 2010. Colored pencil on colored paper, 8 1/4 x 11 11/16 inches (21 x 29.7 cm). Courtesy of the artist and Sies + Höke



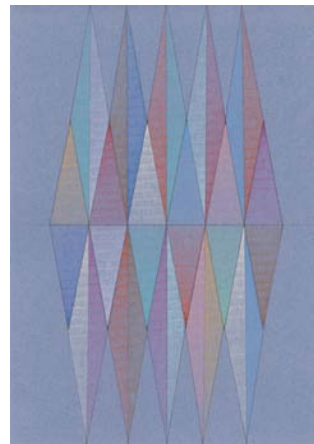
CW1: Claudia Wieser, *Untitled*, 2010. Colored pencil on colored paper, 27 9/16 x 13 3/4 inches (70 x 35 cm). Courtesy of the artist and Sies + Höke.



CW6: Claudia Wieser, *Untitled*, 2010. Colored pencil and gold leaf on colored paper, 8 1/4 x 11 11/16 inches (21 x 29.7 cm). Courtesy of the artist and Sies + Höke.



CW12: Claudia Wieser, *Untitled*, 2010. Pencil on paper, 11 11/16 x 8 1/4 inches (29.7 x 21 cm). Courtesy of the artist and Sies + Höke.



CW7: Claudia Wieser, *Untitled*, 2010. Colored pencil on colored paper, 11 11/16 x 8 1/4 inches (29.7 x 21 cm). Courtesy of the artist and Sies + Höke.



CW13: Claudia Wieser, *Untitled*, 2010. Colored pencil on colored paper, 11 11/16 x 8 1/4 inches (29.7 x 21 cm). Courtesy of the artist and Sies + Höke.