

Nancy Spero: Paper Mirror

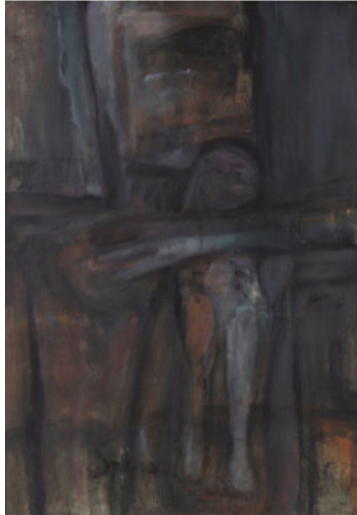
Museo Tamayo Arte Contemporáneo

October 8th, 2018 — February 17th, 2019

1.

Mother and Child (I), 1956
Oil on canvas
123.2 x 85 cm / 48.5 x 33.5 in.
Framed: 128.9 x 90.8 x 5.7 cm
50 3/4 x 35 3/4 x 2 1/4 inches

Galerie Lelong N.Y.



2.

Les Anges, Merde, Fuck You, 1960
Gouache & ink on paper
43.8 x 55.9 cm / 17.25 x 22 in.
Framed: 50.8 x 62.3 x 3.2 cm
20 x 24 1/2 x 1 1/4 inches

Galerie Lelong N.Y.



3.

Lovers (V) (Fornicators), 1960
Gouache, watercolor, and ink on paper
43.8 x 55.3 cm / 17.25 x 2.75 in.
Framed: 53.3 x 65.2 x 3.8 cm
21 x 25 5/8 x 1 1/2 inches

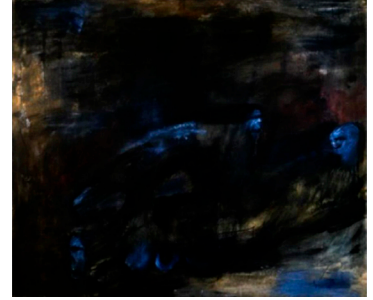
Galerie Lelong N.Y.



4.

Nightmare Figures II, 1961
Oil on canvas
129.5 x 160 cm / 51 x 63 in.
Framed: 138.3 x 168.6 x 6 cm
54 7/16 x 66 3/8 x 2 3/8 in

Galerie Lelong N.Y.



5.

Great Mother Birth, 1962
Oil on canvas
172.7 x 111.8 cm (68 x 44 in.)
Framed: 179.1 x 116.8 x 5.9 cm
70 1/2 x 46 x 2 5/16 inches

Galerie Lelong N.Y.



6.

Lovers IX, 1965
Oil on canvas
113 x 198 cm / 44.5 x 78 in.
Framed: 117.16 x 203.84 x 5.72 cm
46 1/8 x 80 1/4 x 2 1/4 in

Galerie Lelong N.Y.



7.

Scenes from the Mediterranean, 1963

Oil on canvas

41.9 x 69.9 x 3.2 cm / 16 1/2 x 27 1/2 x 1 1/4 in.

Framed: 41.9 x 69.9 x 3.2 cm
16 1/2 x 27 1/2 x 1 1/4 inches



Galerie Lelong N.Y.

8.

Atom Bomb, 1966

Gouache and ink on paper

61 x 91.4 cm / 24 x 36 in.

Framed: 70.5 x 100.6 x 3.8 cm
27 3/4 x 39 5/8 x 1 1/2 in



Collection Steve Johnson
and Walt Sudol

9.

Female Bomb, 1966

Gouache and ink on paper

86.4 x 68.6 cm / 34 x 27 in.

Framed: 95.9 x 79.4 x 4.1 cm
37.75 x 31.25 x 1.625 in.



Jane DeBevoise

10.

Male Bomb I, 1966

Gouache and ink on paper

86.4 x 68.6 cm / 34 x 27 in.

Framed: 95.3 x 78.7 x 3.8 cm
37 1/2 x 31 x 1 1/2 inches



Galerie Lelong N.Y.

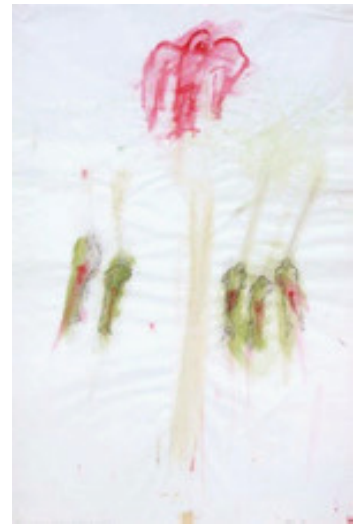
11.

Bomb, Tree, Eagle, Lynched Victims, 1967

Gouache and ink on paper

91.4 x 61 cm / 36 x 24 in.

Framed: 97 x 67.3 x 3.8 cm
38 1/4 x 26 1/2 x 1 1/2 inches



Galerie Lelong N.Y.

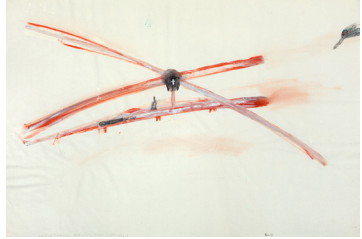
12.

Cardinal Spellman, Helicopter, Eagle, Cross, Angel, 1967

Gouache and ink on paper

61 x 91.4 cm / 24 x 36 in.

Framed: 70.5 x 100.3 x 3.8 cm
27 3/4 x 39 1/2 x 1 1/2 inches



Galerie Lelong N.Y.

13.

F111-Victims in River of Blood, 1967 Gouache and ink on paper

60.3 x 90.8 cm / 23.75 x 35.75 in.

Framed: 70.5 x 100.3 x 3.8 cm
27 3/4 x 39 1/2 x 1 1/2 inches



Galerie Lelong N.Y.

14.

Kill Commies / Maypole, 1967

Gouache and ink on paper

91.4 x 61 cm / 36 x 24 in.

Framed: 100.3 x 69.9 x 4.1 cm
39.5 x 27.5 x 1 5/8 in.

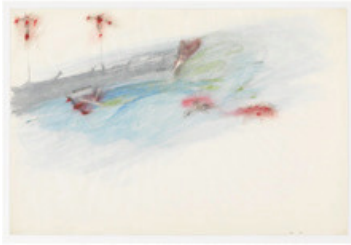


Galerie Lelong N.Y.

15.

Destroyer, Victory , 1968
Gouache and ink on paper
60.3 x 91.4 cm / 23.75 x 36 in.
Framed: 69.9 x 101 x 3.8 cm
27 1/2 x 39 3/4 x 1 1/2 inches

Galerie Lelong N.Y.



19.

Artaud Painting—Hanging
from the Inner Cadaver, 1969
Gouache, ink and collage
on paper
63.5 x 52.1 cm / 25 x 20.5 in.
Framed: 66 x 56.5 x 4.8 cm
26 x 22 1/4 x 1 7/8 in.

Julie Ault



16.

Helicopter, Pilot and Eagle,
1968
Gouache, ink, and collage on
paper
99.1 x 63.5 cm / 39 x 25 in.
Framed: 108.6 x 72.4 x 3.8 cm
42.25 x 28.5 x 1.5 in.

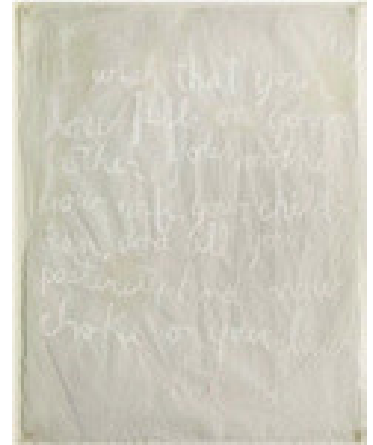
Galerie Lelong N.Y.



20.

Artaud Painting—I wish that
your law... , 1969
Gouache on paper 61 x 49 cm
/ 24 x 19.375 in.
Framed: 68.9 x 55.9 x 3.2 cm
27 1/8 x 22 x 1 1/4 inches

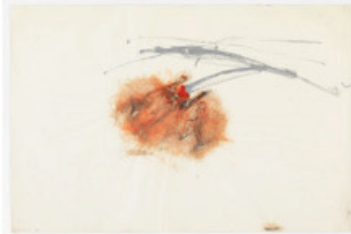
Galerie Lelong N.Y.



17.

Pacification F111 , 1968
Gouache and ink on paper
61 x 90.8 cm / 24 x 35.75 in.
Framed: 70.5 x 101 x 3.8 cm
27 3/4 x 39 3/4 x 1 1/2 inches

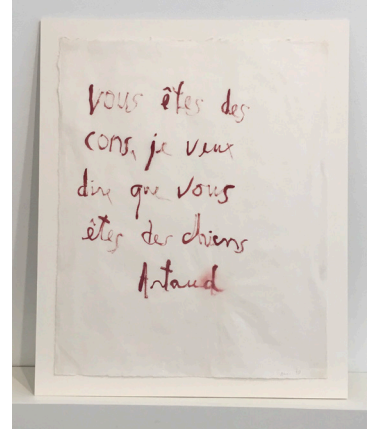
Galerie Lelong N.Y.



21.

Artaud Painting—vous êtes
des cons, 1970
Gouache on paper 62.2 x
50.2 cm / 24 1/2 x 19 3/4 in
Framed: 71 x 60 x 4.5 cm
27 15/16 x 23 5/8 x 1 3/4 in

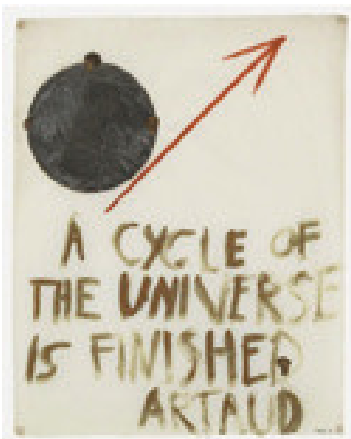
Galerie Lelong N.Y.



18.

Artaud Painting—A Cycle
of the Universe is Finished ,
1969 Gouache, ink, and han-
dprinted collage on paper
63.5 x 50.8 cm / 25 x 20 in.
Framed: 68.9 x 55.9 x 3.2 cm
27 1/8 x 22 x 1 1/4 inches

Galerie Lelong N.Y.



22.

Artaud Painting—Avant de
me suicider je demande
qu'on m'assure de l'être ,
1970
Gouache, hand-printing and
collage on paper
61 x 48.9 cm / 24 x 19.25 in.
Framed: 73 x 60 x 4 cm
27 3/4 x 23 5/8 x 1 9/16 in.

Danh Vo Collection



23.

Artaud Painting—Je suis suspendu à vos bouches, 1970
Gouache, ink and collage on paper
62.2 x 49.5 cm / 24.5 x 19.5 in.
Framed: 71.12 x 57.78 x 5 cm
28 x 22 3/4 x 2 in

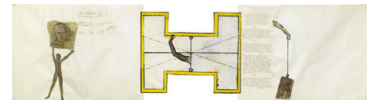
Rick Savinon, New York



27.

Codex Artaud III, 1971
Typewriter and painted collage on paper
50.8 x 193.1 cm / 20 x 76 in.
Framed: 75.3 x 209.5 x 7 cm
26 2/3 x 82 1/2 x 2 3/4 in.

Peter Schjeldah and Brooke Alderson



24.

Artaud Painting—La coupure détruit momentanément..., 1970
Gouache, ink, and hand-painted collage on paper
61 x 49.5 cm / 24 x 19.5 in.
Framed: 72.4 x 60.6 x 3.8 cm
28 1/2 x 23 7/8 x 1 1/2 inches

Galerie Lelong N.Y.



28.

Codex Artaud IX, 1971
Typewriting and painting collage on paper
Framed: 63.5 x 314.96 x 5.08 cm
25 x 124 x 2 in

Los Angeles County Museum of Art - LACMA



25.

Artaud Painting—Suckapric-kadickadildoes, 1970
Gouache and ink on paper
31.1 x 64.8 cm / 12.25 x 25.5 in.
Framed: 41.3 x 73.7 x 3.8 cm
16 1/4 x 29 x 1 1/2 inches

Galerie Lelong N.Y.



29.

Codex Artaud XXIX, 1972
Typewriter and gouache collage on paper
212.1 x 31.8 cm / 83.5 x 12.5 in.
Framed: 310.5 x 45.7 x 5 cm
122.25 x 18 x 2 in.

Galerie Lelong N.Y.



26.

Mars, Victims, Airplane Wings, Eagle Claw, Mercury, 1970
Gouache and ink on paper
99 x 60.96 cm / 39 x 24 in.
Framed: 108.9 x 72.4 x 4.1 cm
42 7/8 x 28 1/2 x 1 5/8 in

Collective Steve Johnson and Walt Sudol



30.

Codex Artaud XXXII, 1972
Typewriter and painted collage on paper
Framed: 56 x 208.3 x 5 cm
22 in. x 6 ft. 10 in. x 2 in.

Galerie Lelong N.Y.



31.

Ars Et Scientia, 1974
Handprinting on paper
21 x 30.48 cm / 8.25 x 12 in.
Framed: 28.48 x 38.1 x 5.08 cm
11 1/2 x 15 x 2 cm



Galerie Lelong N.Y.

35.

I Laid My Stuff All Over It, 1974
Handpainted collage on paper
21 x 24.4 cm / 8 1/4 x 9 5/8 in.
Framed: 26 x 29.8 x 3.5 cm
10.25 x 11.75 x 1 3/8 in.



Williams College Museum of Art

32.

Body Count, 1974
Handprinting and gouache collage on paper
20.32 x 25.4 cm / 8 x 10 in.
Framed: 27.94 x 33.02 x 5.08 cm
11 x 13 x 2 in.



Galerie Lelong N.Y.

36.

Licit Exp, 1974
Handprinting and collage on paper
21.59 x 24.76 cm / 8.5 x 9.75 in.
Framed: 28.6 x 34 x 3.8 cm
11 1/4 x 13 3/8 x 1 1/2 inches



Galerie Lelong N.Y.

33.

Explicit/Explanation, 1974
Collage and handprinting on paper
22.9 x 24.8 cm / 9 x 9.75 in.
Framed: 28.6 x 32.7 x 3.8 cm
11.25 x 12.875 x 1.5 in



Galerie Lelong N.Y.

37.

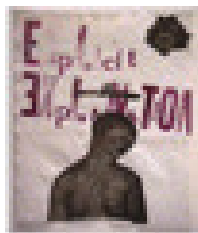
Licit Exp, 1974
Handprinting and gouache collage on paper
30.48 x 21 cm / 12 x 8.25 in.
Framed: 38.73 x 28.89 x 5.08 cm
15 1/4 x 11 3/8 x 2 in.



Galerie Lelong N.Y.

34.

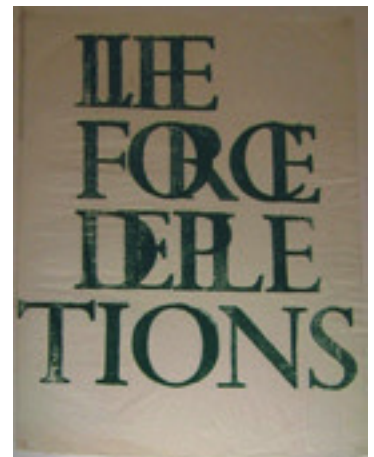
Explicit Explanation, 1974
Handprinting and gouache collage on paper
24.44 x 20.32 cm / 9.625 x 8 in.
Framed: 33.7 x 29.8 x 3.8 cm
13 1/4 x 11 3/4 x 1 1/2 inches



Galerie Lelong N.Y.

38.

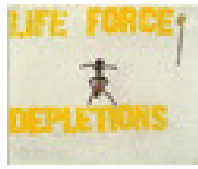
Life Force Depletions, 1974
Handprinting on paper
70.48 x 50.8 cm / 27.75 x 20 x 5.08 in.
Framed: 78.1 x 58.42 x 5 cm
30 3/4 x 23 x 2 in.



Galerie Lelong N.Y.

39.

Life Force Depletions, 1974
Handprinting and gouache
collage on paper
20.3 x 24.7 cm / 8 x 9.75 in.
Framed: 31.75 x 36.19 x 3.17 cm
12 1/2 x 14 1/4 x 1 1/4 in



Hessel Museum of Art
Bard College

43.

Revelati, 1974
Handpainted collage on
bodelin
24.1 x 22.9 cm / 9.5 x 9 in.
Framed: 33.7 x 29.8 x 3.5 cm
13.25 x 11.75 x 1 3/8 in.



Williams College Museum
of Art

40.

Normal Love, 1974
Handprinting and collage on
paper
22.22 x 24.13 cm / 8.75 x 9.5 in.
Framed: 35.56 x 45.54 x 3.5 cm
14 x 16.75 x 1 3/8 in.



Rhona Hoffman

44.

Rip Off, 1974
Handprinting and gouache
collage on paper
25.4 x 20.4 cm / 10 x 8 in.
Framed: 36.51 x 31.43 x 3.81 cm
14 3/8 x 12 3/8 x 1 1/2 in



Hessel Museum of Art
Bard College

41.

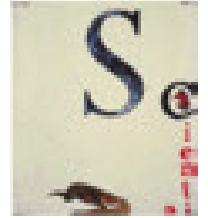
Papa's Little Bed Pal, 1974
Handprinting and gouache
collage on paper
25.4 x 21 cm / 10 x 8.25 in.
Framed: 36.2 x 31.8 x 3.3 cm
14 1/4 x 12 1/2 x 1 5/16 inches



Galerie Lelong N.Y.

45.

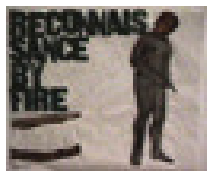
Scientia, 1974
Handprinting and gouache
collage on paper
25.4 x 21.5 cm / 10 x 8.5 in.
Framed: 36.8 x 32.4 x 3.5 cm
14.5 x 12.75 x 1 3/8 in.



Amy Gold and Brett Gorvy

42.

Reconnaissance By Fire, 1974
Handprinting and collage on
paper
21 x 25.4 cm / 8.25 x 10 in.
Framed: 29.21 x 32.70 x 5.08 cm
11 1/2 x 12 7/8 x 2 in.



Galerie Lelong N.Y.

46.

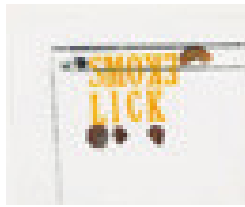
Screw Corporate Art, 1974
Handprinting and typewriter
collage on paper
45.7 x 396.2 cm / 18 x 156 in.
Framed: 60.3 x 409.9 x 5 cm
23 3/4 x 161 3/8 x 2 inches



Galerie Lelong N.Y.

47.

Smoke Lick, 1974
Handprinting, gouache, and collage on paper
20.4 x 24.7 cm / 8 x 9.75 in.
Framed: 31.8 x 35.6 x 3.3 cm
12 1/2 x 14 x 1 5/16 inches



Galerie Lelong N.Y.

51.

The Seventh Hour, 1974
Handprinting and gouache collage on paper
24.76 x 21 cm / 9.75 x 8.25 in.
Framed: 32.06 x 28.57 x 5.08 cm
12 5/8 x 11 1/4 x 2 in.



Galerie Lelong N.Y.

48.

Smoke Lick, 1974–1984
Handprinting and gouache collage on paper
45.72 x 57.78 cm / 18 x 22.75 in.
Framed: 55.2 x 67.3 x 3.5 cm
21 3/4 x 26 1/2 x 1 3/8 inches



Galerie Lelong N.Y.

52.

The Sixth Hour, 1974
Collage and handprinting on paper
25.4 x 21.6 cm / 10 x 8.5 in.
Framed: 33.7 x 29.8 x 3.8 cm
13 1/4 x 11 3/4 x 1 1/2 in.



Julie Ault

49.

The Fifth Hour, 1974
Handprinting and gouache collage on paper
25.4 x 21 cm / 10 x 8.25 in.
Framed: 36.8 x 32 x 5 cm
14 1/2 x 12 5/8 x 1 3/8 in



Frank Williams

53.

The Third Hour, 1974
Collage and handprinting on paper
25.4 x 21.6 cm / 10 x 8.5 in.
Framed: 30.5 x 27.3 x 3 cm
12 x 10.75 x 1 3/16 in



Roni Horn

50.

The Second Hour, 1974
Collage and handprinting on paper
25.4 x 21.6 cm / 10 x 8.5 in.
Framed: 30.5 x 27.3 x 2.5 cm
12 x 10 3/4 x 1 in.



Julie Ault

54.

Female Symbols I, 1981
Handpainted collage on paper
50.8 x 274.32 cm / 20 in x 9 feet.
Framed: 60 x 291 x 4 cm
23 5/8 x 114 1/2 x 1 9/16 in.



Barbara Gross Galerie,
München / Galerie Lelong
N.Y.

55.

Sky Goddess and Snakes, 1981

Handprinted and gouache collage on paper
50.8 x 279.4 cm/20in. x 9 feet 2 in.
Framed: 60 x 291 x 4.5 cm
23 5/8 x 114 1/2 x 1 3/4 in

Barbara Gross Galerie, München



59.

Untitled (Runner, Fertility Figure), 1984

Handprinting and printed collage on paper
62.23 x 49.53 cm/24.5 x 19.5 in.
Framed: 69.21 x 56.51 x 5 cm
27 1/4 x 22 1/4 x 2 in.

Galerie Lelong N.Y.



56.

Artemis, Goddess and Centaur, 1983

Handprinting on paper
71.12 x 50.8 cm/28 x 20 in.,
Framed: 80 x 59.7 x 3.8 cm
31 1/2 x 23 1/2 x 1 1/2 inches

Galerie Lelong N.Y.



60.

Dancing Totem, 1985

Handprinted collage on paper
275 x 51.5 cm/9feet, .25in x 20.25 in.
Framed: 282.57 x 59.05 x 5.08 cm
111 1/4 x 23 1/4 x 2 in.

Galerie Lelong N.Y.



57.

Crawling Woman, 1984

Handprinting on paper
31.75 x 43.18 cm/12.5 x 17 in.
Framed: 41.6 x 53 x 3.8 cm
16 3/8 x 20 7/8 x 1 1/2 inches

Galerie Lelong N.Y.



61.

Goddess and Centaur, 1985

Hand printing on paper
40.6 x 50.8 cm/16 x 20 in.
Framed: 80 x 59.7 x 3.8 3.8 cm
31 1/2 x 23 1/2 x 1 1/2 in

Julie Ault



58.

El Salvador, 1984-85

Handprinting on paper
50.8 x 279.4 cm/20 in. x 9 feet, 2 in.
Framed: 60 x 290 x 4.5 cm
23 5/8 x 114 3/16 x 1 3/4 in

Barbara Gross Galerie, München/Galerie Lelong N.Y.



62.

Goddess I, 1985

Handprinting and printed collage on paper
50.8 x 1,397 cm/20 in. x 550 in.
Framed: 60.96 x 288.29 x 5.5 cm
24 x 133 1/2 x 2 3/16 in. (each panel)

BAMPFA
Berkeley Art Museum and Pacific film Archive
University of California, Berkeley



63.

Irradiated Women, 1985
Hand printing on paper
48.2 x 63.5 cm / 19 x 25 in.
Framed: 54.6 x 69.5 x 3.8 cm
21 1/2 x 27 3/8 x 1 1/2 in.

Julie Ault



67.

Untitled (Fertility Figures with Heads), 1985
Handprinting and printed collage on paper
49.53 x 62.23 cm / 19.5 x 24.5 in.
Framed: 57.15 x 69.85 x 5.08 cm
22 1/2 x 27 1/2 x 2 in.

Galerie Lelong N.Y.



64.

Mourning Women Totem, 1985
Handprinting and printed collage on paper
Framed: 279.4 x 50.8 x 7 cm
110 x 20 x 2 3/4 in.

Mrs. Harriet Horwitz Meyer



68.

Double Sheela, 1986-87
Handprinting on paper Each:
24 x 19 inches (61 x 48.3 cm)
Framed: 68.6 x 109.2 x 3.8 cm
27 x 43 x 1 1/2 inches

Galerie Lelong N.Y.



65.

Untitled, 1985
Handprinting on paper
31.75 x 42.54 cm / 12.5 x 16.75 in.
Framed: 41.6 x 53 x 3.8 cm
16 3/8 x 20 7/8 x 1 1/2 inches

Galerie Lelong N.Y.



69.

Burnt Mother and Child, 1987
Handprinting on paper
31.1 x 48.3 cm / 12.25 x 19 in.
Framed: 41.6 x 58.7 x 3.8 cm
16 3/8 x 23 1/8 x 1 1/2 inches

Galerie Lelong N.Y.



66.

Untitled, 1985
Hand printing on paper
48.2 x 63.5cm / 19 x 25 in.
Framed: 54.6 x 69.5 x 3.8 cm
21 1/2 x 27 3/8 x 1 1/2 in.

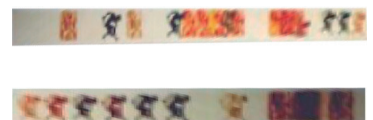
Julie Ault



70.

Sheela and the Dildo Dancer, 1987
Suite of eight panels; handprinting and printed collage on paper
61 x 2225.2 cm / 24 x 73 feet, 4 in.
Framed, each:
68.58 x 287.02 x 5.39 cm
27 x 113 x 2 1/8 in

Galerie Lelong N.Y.



71.

Sky Goddess IV—Acrobat
Balancing Head, 1987
Handprinting on paper, three
panels
Framed: 50.8 x 838.2 x 7 cm
20 x 330 x 2 3/4 in.

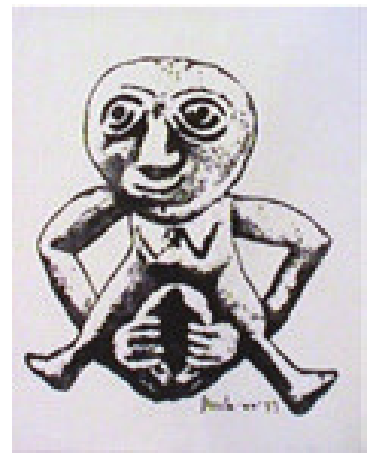


Mrs. Harriet Horwitz Meyer

75.

Sheela-Na-Gig, 1990
Handprinting on paper
Approx. 60.96 x 45.72 cm / 24
x 18 in.
Framed: 69.85 x 56.83 x 5.08 cm
27 1/2 x 22 3/8 x 2 in.

Galerie Lelong N.Y.



72.

Mourning Women No. 3, 1989
Handprinting and printed
collage on paper
64.8 x 97.8 cm / 25.5 x 38.5 in.
Framed: 73.66 x 104.14 x 4 cm
29 x 41 x 1 9/16 in.



Rhona Hoffman Gallery,
Chicago

76.

Sheela/Woman/Bird/Fat
Woman, 1990
Handprinting, collage on
japanese tissue paper
49.5 x 244 cm. / 19 1/2 x 96
1/16 in. (each)
Framed: 61.5 x 290 x 6 cm
24 1/4 x 114 3/16 x 2 3/8 in

Vancouver Art Gallery



73.

Sheela and Posing Figure,
1989
Handprinting and printed
collage on paper
49.5 x 62.2 cm / 19.5 x 24.5 in.
Framed: 56.2 x 68.3 x 3.2 cm
22 1/8 x 26 7/8 x 1 1/4 inches



Galerie Lelong N.Y.

77.

Sheela, Athena & Hittite, 1991
Handprinting and printed
collage on paper
52.1 cm x 2.43 metros (20.5 x
8 feet)
Framed: 60 x 251 x 4.5 cm
23 5/8 x 98 13/16 x 1. 3/8 in

Barbara Gross Galerie,
München / Galerie Lelong
N.Y.



74.

The Goddess Nut II, 1990
Handprinting and printed
collage on paper
9233.68 x 279.4 cm / 92 x 110
in. (5 panels)
Framed, each: 217.8 x 58.4 x
3.8 cm
85 3/4 x 23 x 1 1/2 inches



Galerie Lelong N.Y.

78.

Sheela-Na-Gig, 1990-1998
Handprinting on paper
Approx. 60.96 x 45.72 cm / 24
x 18 in.
Framed: 72.39 x 54.5 cm
28 1/2 x 21 1/2 x 2 in.

Galerie Lelong N.Y.



79.

Sheela-Na-Gig, 1990–1998
Handprinting on paper
Approx. 60.96 x 45.72 cm / 24 x 18 in.
Framed: 72.39 x 54.5 cm
28 1/2 x 21 1/2 x 2 in.

Galerie Lelong N.Y.



83.

Split, 1994
Handprinting and printed collage on paper
63.5 x 96.5 cm / 25 x 38 in.
Framed: 78.1 x 114.3 x 5.5 cm
30 3/4 x 45 x 2 3/16 in.

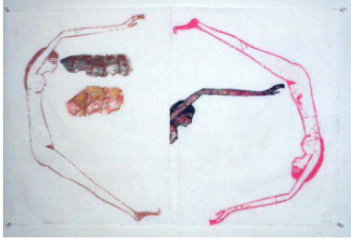
Mrs. Harriet Horwitz Meyer



80.

Goddess Nut, 1992
Handprinting and printed collage on paper
62.2 x 95.2 cm / 24.5 x 37.5 in.
Framed: 70 x 105.5 x 5 cm
27 1/2 x 41 1/2 x 2 in.

Barbara Gross Galerie,
München / Galerie Lelong
N.Y.



84.

Athena and Chorus, 1995
Handprinting and printed collage on paper
49.5 x 245.1 cm / 19.5 x 95.5 in.
Framed: 57.78 x 253.04 x 5.08 cm
22 3/4 x 99 5/8 x 2 in.

Galerie Lelong N.Y.



81.

Hieroglyphs, 1992
Handprinting and printed collage on paper
62.2 x 144.8 cm / 24.5 x 57 in.
Frame: 70.48 x 153.67 x 5.08 cm
27 3/4 x 60 1/2 x 2 in

Galerie Lelong N.Y.



85.

Performance, 1995
Handprinting and printed collage on paper
189.5 x 50 cm / 74.5 x 19.68 in.
Framed: 197.48 x 57.15 x 5.08 cm
77 3/4 x 22 1/2 x 2 in

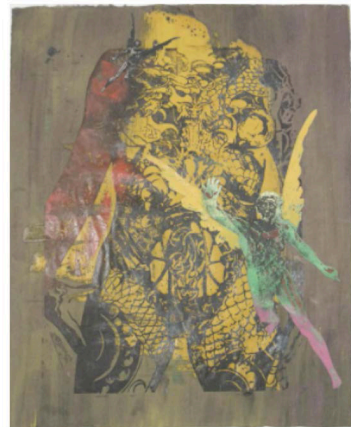
Galerie Lelong N.Y.



82.

La Renommée, 1994
Handprinting on paper
64.1 x 49.5 cm / 25 1/4 x 19 1/2 in.
Frame: 96.85 x 54.61 x 5.08 cm
27 1/2 x 21 1/2 x 2 in

Galerie Lelong N.Y.



86.

Explicit / Victim, 1997
Handprinting and printed collage on paper
48.26 x 63.81 cm / 19 x 25.125 in.
Framed: 76.2 x 60.9 x 3.8 cm
30 x 24 x 1 1/2 inches

Galerie Lelong N.Y.



87.

La Naissance du Genie de la Patrie, 1997
Handprinting on paper
63.5 x 93.98 cm / 25 x 37 in.
Framed: 71.12 x 100.96 x 5.08 cm
28 x 39 3/4 x 2 in.

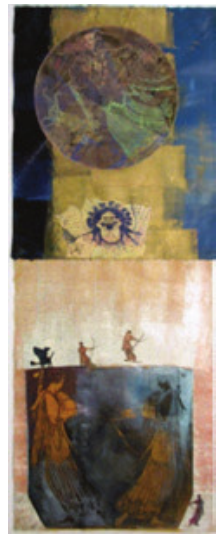
Galerie Lelong N.Y.



91.

The Maenad in the Moon, 2002
Handprinting and printed collage on paper
125.73 x 49.53 cm / 49.5 x 19.5 in.
Framed: 139.7 x 62.23 x 3.5 cm
55 x 24.5 x 1 3/8 in.

Michael Newman,
Seattle WA



88.

Maenad, 1999
Handprinting and painted collage on paper
46.35 x 163.5 cm / 8.25 x 25 in
Framed: 53.97 x 71.12 x 5.08 cm
21 1/4 x 28 x 2 in.

Galerie Lelong N.Y.



92.

Maypole (Take No Prisoners), 2007
Handprinting on aluminum (253 heads), ribbon, steel chain, and aluminum pole with steel base
Dimensions variable

Galerie Lelong N.Y.



89.

Dream, 2000
Handprinting and printed collage on paper
48.3 x 61 cm / 19 x 24 in.
Framed: 62.2 x 78.1 x 5.5 cm
24 1/2 x 30 3/4 x 2 3/16 in.

Mrs. Harriet Horwitz Meyer



93.

For God and Country, 2008
Steel, plastic and hand print on aluminum
177.8 x 66 cm / 70 x 26 in.

Danh Vo Collection



90.

La Renommée, 2001
Handprinting and printed collage on paper
46.35 x 63.81 cm / 18.24 x 25.125 in.
Framed: 54.61 x 71.12 x 5.08 cm
21 1/2 x 28 x 2 in.

Galerie Lelong N.Y.



94.

For God and Country, 2008
Steel, plastic and hand print on aluminum
177.8 x 66 cm / 70 x 26 in.

Danh Vo Collection



95.

Irene Sosa
Woman as Protagonist The
Art of Nancy Spero, 1993
Color video with sound
45 min.

Irene Sosa



96.

Irene Sosa
L'Envol, 1995
Color video with sound
5 min.

Irene Sosa



97.

Irene Sosa
Nancy Spero at the Fests-
pielhaus Hellerau in
Dresden, Germany, 1998
Color video with sound
7 min.

Irene Sosa



98.

Irene Sosa
Antología de Nancy
Spero
16 films on VOB format

Irene Sosa

