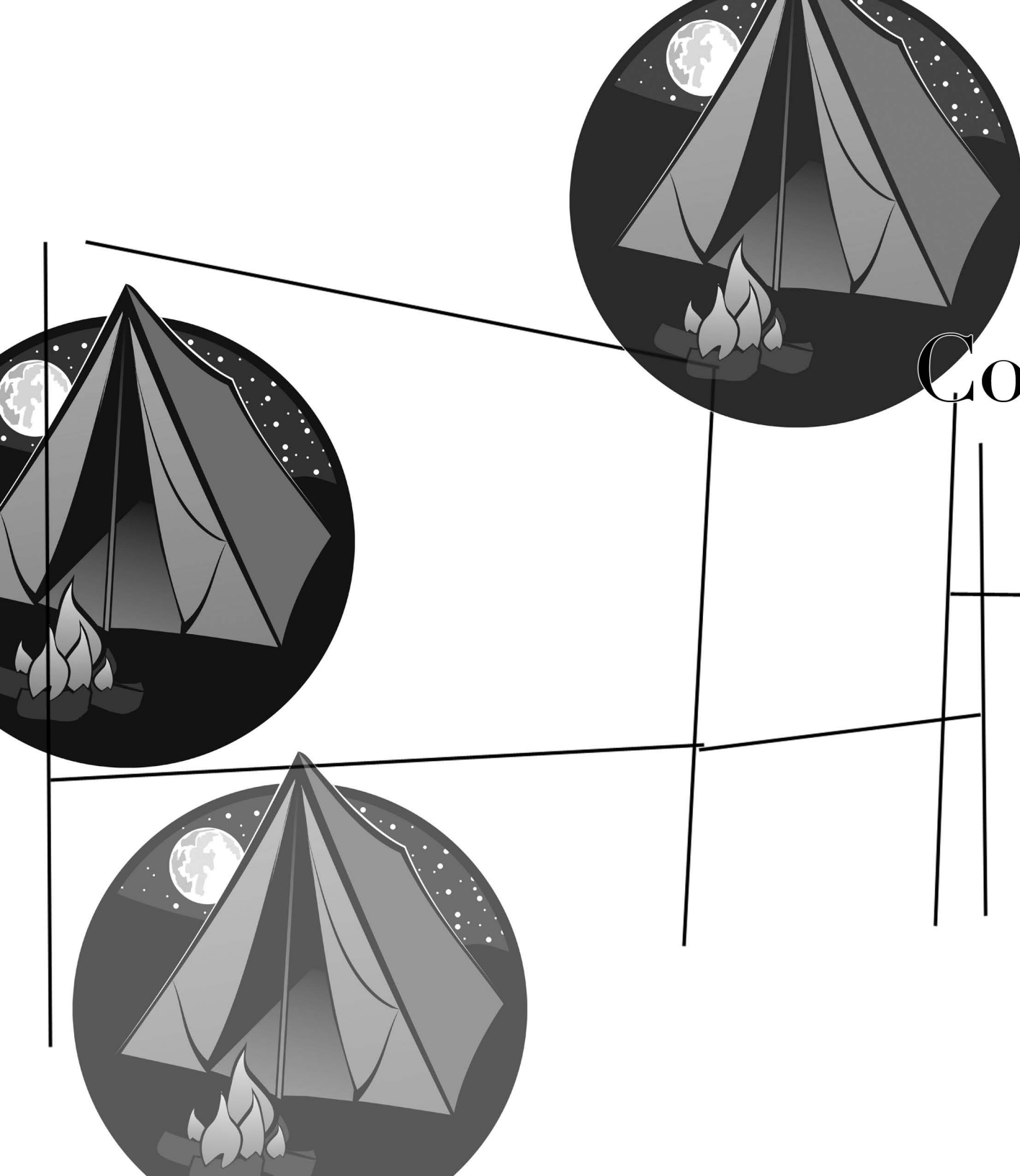
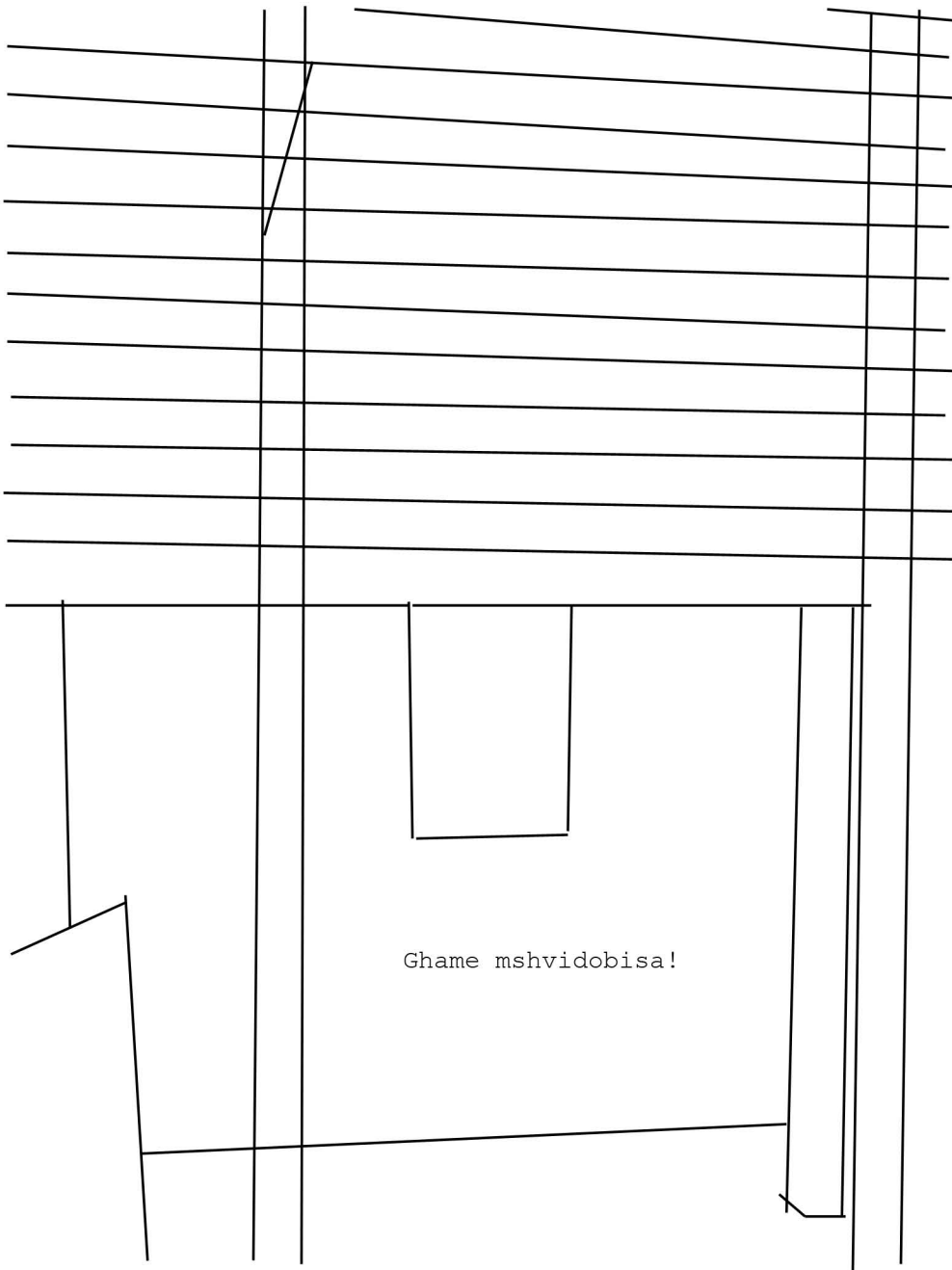


Tbilisi
Center
for
Contemporary
Art



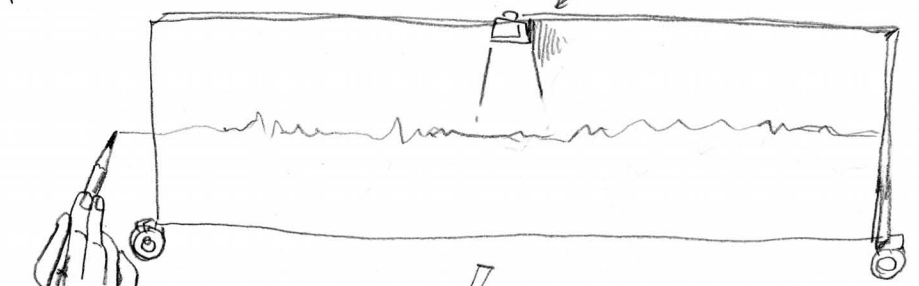
scenario 4



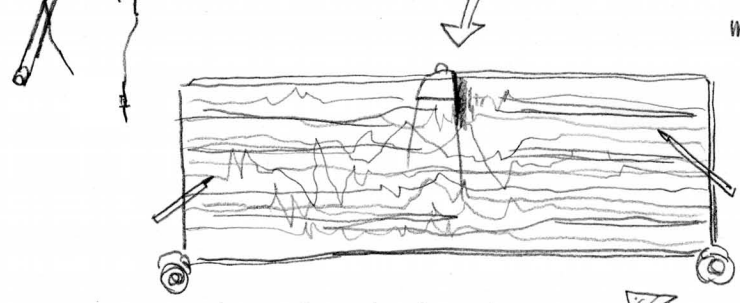
06:04:15 closings and openings

pencil drawing

light



1 round



maybe color pencils

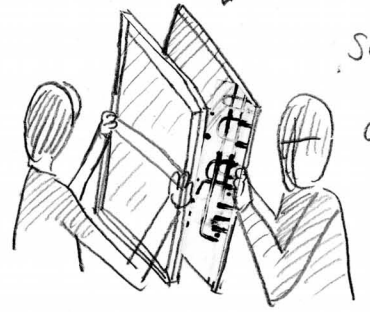
xxx rounds

storefront drawing

MUSIC
from
neighborhood

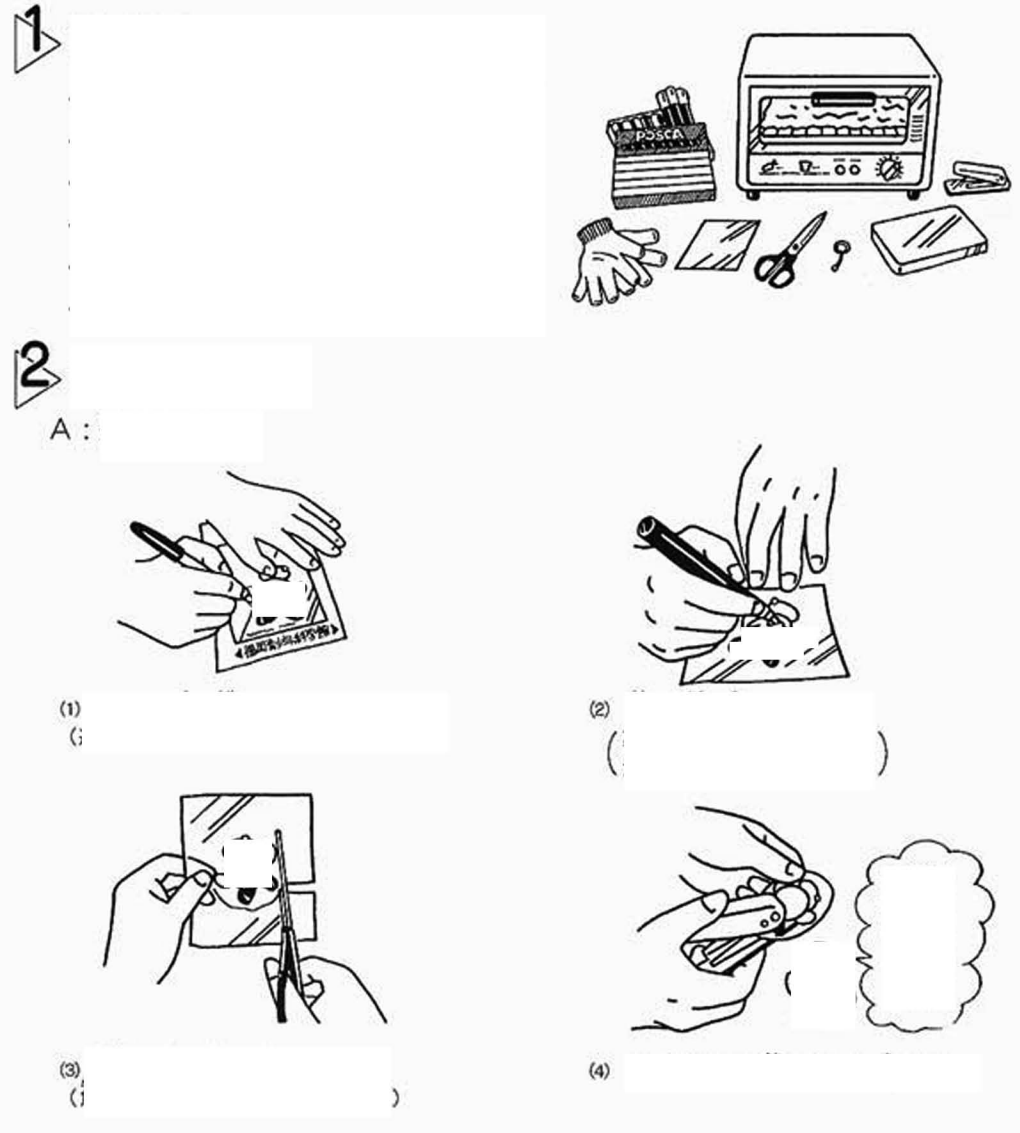


Dark out



Sound of canvas

13:37:29 plastic caps
drawing on them and melting them
pressing until they get hard again



00:10:32 building L-shape structure

AS

With high speed a piece of

chalk is cracking against this blackboard at any given point it does a stuttering advance along a temporal axis then taking off flying back starting off again right next to the first point in time and now travelling down its spatial axis which finally would get a curving drive by just drop the arm mid-way.

As

Several things happening at the same time

Lose ends (can it just remain like this?)

Draw: system of coordinates

- spacial axis
- temporal axis

(simultaneously? How...)

Need:

- chalk
- blackboard (white paper)
- a given point
- an arm
- camera, recorder, monitor, printer, ink, cables, plug, electricity, speakers