

EXHIBITION CHECKLIST

poems, Bridget Donahue, New York, New York, November 11, 2018 - January 13, 2019

**Eileen Myles**

I told him I was a famous poet and he never heard of me., 2016

digital print

24 × 18 in. (60.96 × 45.72 cm)

Edition 1/8 + I AP

**Eileen Myles**

- , 2017

digital print

22 × 24 in. (55.88 × 60.96 cm)

Edition 1/8 + I AP

**Eileen Myles**

The cow was not drugged. , 2017

digital print

24 × 18 in. (60.96 × 45.72 cm)

Edition 1/8 + I AP

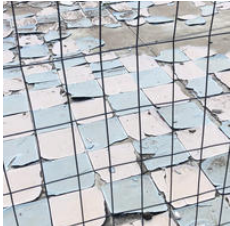
**Eileen Myles**

- , 2018

digital print

24 × 20 in. (60.96 × 50.80 cm)

Edition 1/8 + I AP

**Eileen Myles**

- , 2018

digital print

24 × 20 in. (60.96 × 50.80 cm)

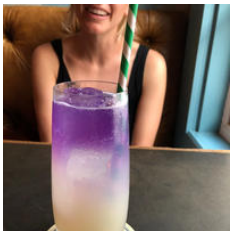
Edition 1/8 + I AP

**Eileen Myles**

one good leg, 2017
digital print
24 × 18 in. (60.96 × 45.72 cm)
Edition 1/8 + I AP

**Eileen Myles**

line, 2018
digital print
24 × 18 in. (60.96 × 45.72 cm)
Edition 1/8 + I AP

**Eileen Myles**

it's absinthe, 2018
digital print
20 × 24 in. (50.80 × 60.96 cm)
Edition 1/8 + I AP

**Eileen Myles**

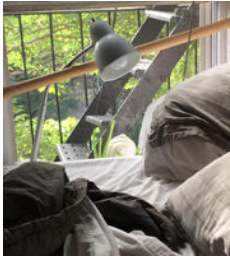
sex, 2017
digital print
24 × 18 in. (60.96 × 45.72 cm)
Edition 1/8 + I AP

**Eileen Myles**

Consternation about Mimm's, 2018
digital print
24 × 18 in. (60.96 × 45.72 cm)
Edition 1/8 + I AP

**Eileen Myles**

- , 2018
digital print
24 × 18 in. (60.96 × 45.72 cm)
Edition 1/8 + I AP

**Eileen Myles**

certainly, 2017
digital print
24 × 18 in. (60.96 × 45.72 cm)
Edition 1/8 + I AP

**Eileen Myles**

irish baby, 2018
digital print
24 × 18 in. (60.96 × 45.72 cm)
Edition 1/8 + I AP

**Eileen Myles**

I think Honey missing Joe, 2017
digital print
24 × 18 in. (60.96 × 45.72 cm)
Edition 1/8 + I AP

**Eileen Myles**

we're going to Monte Alban & we're looking for Mr. Churro , 2016
digital print
23 3/8 × 18 1/2 × 1/2 in. (59.37 × 46.99 × 1.27 cm) (framed)
Edition 1/8 + I AP

**Eileen Myles***babies are back (Akilah)*, 2015

digital print

25 1/2 × 19 1/2 × 1/2 in. (64.77 × 49.53 × 1.27 cm) (framed)

Edition 1/8 + I AP

**Eileen Myles***puppy*, 2016

digital print

25 3/8 × 19 1/2 × 1/2 in. (64.45 × 49.53 × 1.27 cm) (framed)

Edition 1/8 + I AP

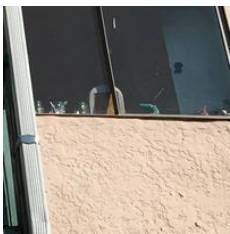
**Eileen Myles**

-, 2016

digital print

25 1/2 × 19 1/2 × 1/2 in. (64.77 × 49.53 × 1.27 cm) (framed)

Edition 1/8 + I AP

**Eileen Myles***LA*, 2015

digital print

19 1/2 × 19 1/2 × 1/2 in. (49.53 × 49.53 × 1.27 cm) (framed)

Edition 1/8 + I AP

**Eileen Myles***Dennis & Kevin*, 2017

digital print

15 1/2 × 20 × 3/4 in. (39.37 × 50.80 × 1.91 cm) (framed)

Edition 2/8 + I AP



Eileen Myles

"earlier works", 2018

plywood box including six framed prints (from 2015-2017)

plywood box: 26 1/2 × 22 × 15 in. (67.31 × 55.88 × 38.10 cm)

babies are back (Akilah), 2015: 25 1/2 × 19 1/2 × 1/2 in. (64.77 × 49.53 × 1.27 cm) (framed)

Dennis & Kevin, 2017: 15 1/2 × 20 × 3/4 in. (39.37 × 50.80 × 1.91 cm) (framed)

LA, 2015: 19 1/2 × 19 1/2 × 1/2 in. (49.53 × 49.53 × 1.27 cm) (framed)

puppy, 2016: 25 3/8 × 19 1/2 × 1/2 in. (64.45 × 49.53 × 1.27 cm) (framed)

- , 2016: 25 1/2 × 19 1/2 × 1/2 in. (64.77 × 49.53 × 1.27 cm) (framed)

we're going to Monte Alban & we're looking for Mr. Churro, 2016: 23 3/8 × 18 1/2 × 1/2 in. (59.37 × 46.99 × 1.27 cm) (framed)