

EXHIBITION CHECKLIST

Remote Controls, Bridget Donahue, New York, New York, January 27 - March 12, 2017

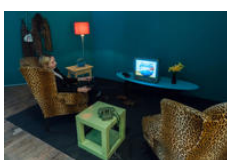


Lynn Hershman Leeson

Study for Dance Project, 1978

Ink and acrylic on paper

23 1/2 × 20 1/2 × 1 in. (59.69 × 52.07 × 2.54 cm) (framed)



Lynn Hershman Leeson

Lorna (LaserDisc), 1979-1984

(*Earliest Interactive LaserDisc)

Earliest interactive laser disc, created with original software

LHL 177 AND LHL 176

Edition of 25



Lynn Hershman Leeson

United Snakeladies of America, 1972

Mixed media on paper (pencil, ink, paper, glitter collage)

28 × 22 in. (71.12 × 55.88 cm)

31 × 25 × 2 in. (78.74 × 63.50 × 5.08 cm) (framed)



Lynn Hershman Leeson

Deep Contact, 1984-89

(*Earliest Touchscreen)

Interactive videodisk installation, including first touch screen created on hypercard and ported, video, color, sound, with coding in collaboration with Sarah Roberts

Infinite duration

Edition of 3 plus I AP



Lynn Hershman Leeson

Home Front, 1993-2011

Video installation, dollhouse, paint, custom electronics

22 3/4 × 28 × 17 1/2 in. (57.79 × 71.12 × 44.45 cm)

Edition of 3 plus I AP



Lynn Hershman Leeson

The Electronic Diaries: Confessions of a Chameleon, Binge, First Person Plural, Shadow's Song, 1984-1996
4K video (color, sound)
83 minutes
Edition of 5 plus I AP



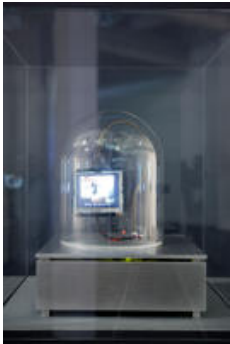
Lynn Hershman Leeson

Seduction of a Cyborg, 1994
(*Earliest Digital Editing Software)
Video (first digital video projection), color, sound
6 minutes
Edition of 8 plus I AP



Lynn Hershman Leeson

Woman Disappearing into Pixel Shadows, 2000
High-definition mapping file
24 1/2 × 33 × 2 in. (62.23 × 83.82 × 5.08 cm)
Edition of 3 plus I AP



Lynn Hershman Leeson

Synthia Stock Ticker, 2000-2002
(*Earliest Emotional Engine to reflect Stock Market Data)
Custom software, LCD, glass and electronics, first use of stock date and behavior as net motivation
15 × 11 × 11 in. (38.10 × 27.94 × 27.94 cm)
Edition of 3 plus I AP



Lynn Hershman Leeson

Cyborg Lightbox, 2003-2006
Photograph mounted on backlit lightbox
15 × 19 1/2 × 5 in. (38.10 × 49.53 × 12.70 cm)
Edition of 3 plus I AP



Lynn Hershman Leeson

Net Conditioned, 2017
Mesh, mirror, wax, glass eye, makeup, Plexiglass
12 × 8 × 8 in. (30.48 × 20.32 × 20.32 cm)



Lynn Hershman Leeson

Venus of the Anthropocene, 2017

Vanity dresser with drawers, stool, mirror, Mac Mini, webcam, facial recognition system, plastic body parts, plastic containers with specific labels for DNA, anatomical model, custom software

Dimensions variable

Edition of 1 plus I AP