

## EXHIBITION CHECKLIST

*SQRRL*, Bridget Donahue, New York, New York, November 14, 2015 - January 10, 2016

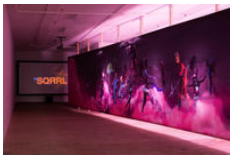


**John Russell**

*Transformational Joy*, 2014

Wood, metal, mixed media sculpture

89 × 42 × 40 in. (226.06 × 106.68 × 101.60 cm)

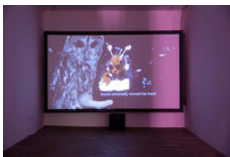


**John Russell**

*Mirror Mapping the Stars*, 2015

Backlit digital print on vinyl, wood, hardware and fluorescent lights

98 × 720 × 23 in. (248.92 cm × 18.29 m × 58.42 cm)



**John Russell**

*Relaxation Video: SQRRL/BRUCE WILLIS*, 2015

Video

45 minutes

Edition 1/3 + II AP



**John Russell**

*Untitled (Abstraction of Labour Time/ External Recurrence/ Monad) III*, 2015

Photopolymer etching

30 × 23 in. (76.20 × 58.42 cm) (framed)

Edition 1/3 + II AP



**John Russell**

*SQRRL*, 2015

Web artwork

Edition 1/20

**John Russell***Untitled (Box)*, 2015

Oil on cardboard packaging

8 1/4 × 5 1/2 × 2 1/2 in. (20.96 × 13.97 × 6.35 cm)

**John Russell***Untitled (Box)*, 2015

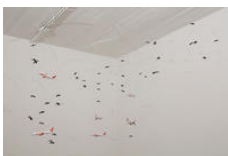
Oil on cardboard packaging

9 1/2 × 5 1/2 × 1 1/2 in. (24.13 × 13.97 × 3.81 cm)

**John Russell***Untitled (Box)*, 2015

Oil on cardboard packaging

8 1/2 × 6 1/2 × 2 1/2 in. (21.59 × 16.51 × 6.35 cm)

**Dan Mitchell, John Russell***easyJet / Flies*, 2015

Mobile with plastic flies and model EasyJet planes

Dimensions variable

**John Russell***Untitled (Abstraction of Labour Time/ External Recurrence/ Monad) II*, 2015

Oil on digital print on canvas

62 × 50 in. (157.48 × 127.00 cm)