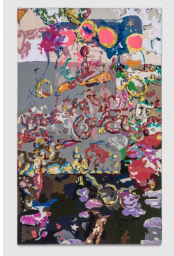


# BORTOLAMI

Ivan Morley

12 Jan - 18 Feb 2017



**IVAN MORLEY**

*A True Tale*, 2016

Thread on canvas

51 1/2 x 31 1/4 in / 130.8 x 79.4cm

IM7817



**IVAN MORLEY**

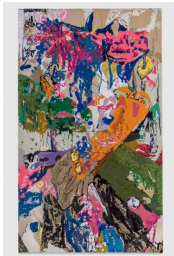
*Tehachepi (sic), A True Tale*, 2016

Watercolor, charcoal, graphite, gouache  
and pastel on kraft paper

Artwork: 75 3/4 x 47 1/2 in / 192.4 x  
120.7cm

Framed: 80 3/4 x 52 1/2 in / 205.1 x  
133.4cm

IM7816



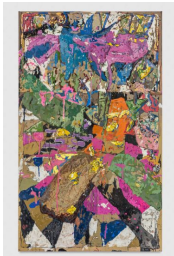
**IVAN MORLEY**

*A True Tale*, 2016

Thread on canvas

67 1/2 x 39 1/2 in / 171.5 x 100.3cm

IM7815



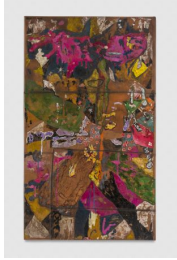
**IVAN MORLEY**

*A True Tale*, 2016

Oil, wax, and KY jelly on panel

70 1/2 x 42 in / 179.1 x 106.7cm

IM7818



**IVAN MORLEY**

*A True Tale*, 2016  
Acrylic and dye on tooled leather  
70 x 41 in / 177.8 x 104.1cm  
IM7819



**IVAN MORLEY**

*A True Tale*, 2016  
Thread on canvas  
50 x 43 in / 127 x 109.2cm  
IM7886



**IVAN MORLEY**

*A True Tale*, 2016  
Thread on canvas  
72 x 39 in / 182.9 x 99.1cm  
IM7885



**IVAN MORLEY**

*A True Tale*, 2016  
Thread on canvas  
33 x 29 in / 83.8 x 73.7cm  
IM7820



**IVAN MORLEY**

*A True Tale*, 2016  
Thread on canvas  
36 1/2 x 29 1/2 in / 92.7 x 74.9cm  
IM7814



**IVAN MORLEY**

*Tehachepi (sic)*, 2016  
Oil with gold, and mother of pearl on glass  
32 x 24 in / 81.3 x 61cm  
IM7821



**IVAN MORLEY**

*From Don, George, and Diane*, 2010  
Oil, wax, and KY Jelly on polyester over panel  
33 x 27 in / 83.8 x 68.6cm  
IM7196



**IVAN MORLEY**

*Logo*, 2005  
Oil, acrylic dye, wax, KY jelly and u.v. varnish on linen over panel  
43 1/4 x 36 in / 109.9 x 91.4cm  
IM7893



**IVAN MORLEY**

*Tehachepi (sic)*, 2003  
Acrylic, oil, thread, batik and u.v. varnish on denim  
60 x 45 in / 152.4 x 114.3cm  
IM7894



**IVAN MORLEY**

*Emblem*, 2005  
Acrylic and dye on tooled leather over panel  
44 x 25 1/2 in / 111.8 x 64.8cm  
IM7892