



“±8 – A Group Exhibition of Contemporary Ceramics”

July 12 - September 8, 2019

SHOP Taka Ishii Gallery, Hong Kong



Kentaro Kawabata
Batista, 2019
Porcelain, glass
41 x 47 x 63 cm

KeK-CE_19_010



Kentaro Kawabata
“Soos”, 2019
Porcelain, slag, silver
13 x 29 x 20

KeK-CE_19_011



Kentaro Kawabata
“Soos”, 2019
Porcelain, slag, silver, platinum
30 x 20 x 24 cm

KeK-CE_19_012



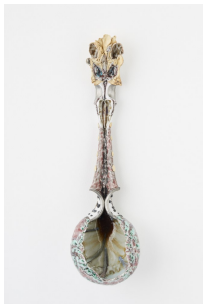
Kentaro Kawabata
“Soos”, 2019
Porcelain, slag, silver, platinum, lead, epoxy
24 x 28 x 26 cm

KeK-CE_19_013



Kentaro Kawabata
“Undulating”, 2019
Porcelain, glass, platinum
11 x 16 x 15 cm

KeK-CE_19_014



Kentaro Kawabata
“Women figure (spoon)”, 2019
Porcelain, glass, slag, silver, platinum, feldspar
56 x 15 x 15 cm

KeK-CE_19_015



Kentaro Kawabata
“Women figure (spoon)”, 2019
Porcelain, glass, slag, feldspar, silver, platinum
45 x 11 x 11 cm

KeK-CE_19_016



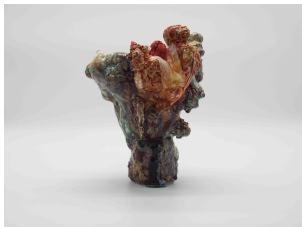
Kazuhito Kawai
“Many Classic Moments”, 2018
Ceramic
23 x 15 x 15 cm

KAK-CE_18_001



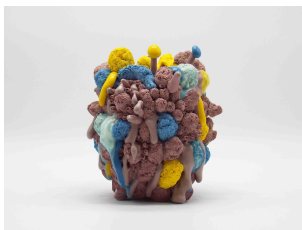
Kazuhito Kawai
“AZYPA”, 2018
Ceramic
14 x 14.5 x 18.8 cm

KAK-CE_18_003



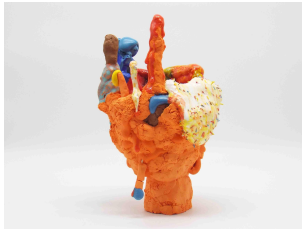
Kazuhito Kawai
“Family”2018
Ceramic
26 x 21 x 21 cm

KAK-CE_18_005



Kazuhito Kawai
“Lily Swimming”2018
Ceramic
18 x 18.5 x 20.5 cm

KAK-CE_18_006



Kazuhito Kawai
"Utahiroba" 2018
Ceramic
17.5 x 16.5 x 26.5 cm

KAK-CE_18_007



Kazuhito Kawai
"Suidobata", 2019
Ceramic
24 x 22 x 23 cm

KAK-CE_19_001



Kazuhito Kawai
"miumiu" 2018
Ceramic
14.8 x 14.8 cm

KAK-PL_18_001



Kazuhito Kawai
"google" 2019
Ceramic
14.8 x 14.8 cm

KAK-PL_19_001



Kazuhito Kawai
"MICHIKO LONDON"2019
Ceramic
15 x 15 cm

KAK-PL_19_002



Kazuhito Kawai
"STARBUCKS"2019
Ceramic
14.8 x 14.8 cm

KAK-PL_19_003



Tony Marsh
"Crucible" Series #2, 2018
Multiple fired clay and glaze
38.1 x 45.8 x 45.8 cm

ToM-CE_18_002



Tony Marsh
"Crucible" Series #3, 2018
Multiple fired clay and glaze
45.8 x 28 x 28 cm

ToM-CE_18_003



Tony Marsh
“Crucible” Series #4, 2018
Multiple fired clay and glaze
40.7 x 30.5 x 30.5 cm

ToM-CE_18_004



Keita Matsunaga
“Monuke”, 2019
Clay
49 x 60 x 46 cm

KeM-CE_19_001



Keita Matsunaga
“Monuke”, 2019
Clay
24 x 32 x 31 cm

KeM-CE_19_003



Keita Matsunaga
“souzou”, 2019
Clay, feldspar, glaze
8 x 15 x 14 cm

KeM-CE_19_004



Keita Matsunaga
“souzou”, 2019
Clay
57 x 28 x 26 cm

KeM-CE_19_005



Keita Matsunaga
“Monuke”, 2019
Clay, glaze, lacquer
9 x 10 x 9 cm

KeM-CE_19_006



Keita Matsunaga
“myakumyaku”, 2019
Clay, glaze, lacquer
4.5 x 7 x 7 cm

KeM-CE_19_007



Akio Niisato
“luminescent...”2019
Ceramic
16 x 18.7 x 18.7 cm

AN-CE_19_001



Akio Niisato
“luminescent...”2019
Ceramic
16.8 x 18.4 x 18.4 cm

AN-CE_19_002



Akio Niisato
“luminescent...”2019
Ceramic
17.9 x 25.2 x 25.2 cm

AN-CE_19_003



Akio Niisato
“luminescent...”2019
Ceramic
Blue: 9.1 x 10.5 x 10.5 cm
Yellow: 7.3 x 9.3 x 9.3 cm
A set of two

AN-CE_19_004



Akio Niisato
“spheres”2019
Ceramic
Aegean blue: 10.2 x 13.3 x 13.3 cm
Spruce blue: 8.3 x 10.1 x 10.1 cm; 2 x 2 x 2.1 cm; 2.1 x 2.2 x 2.1 cm
Navy blue: 2.1 x 2.8 x 2.8 cm; Gold: 3 x 3 x 2.9 cm;
Silver: 3 x 2.8 x 2.9 cm
A set of seven

AN-CE_19_005



Akio Niisato
“luminescent...”2019
Ceramic
Blue: 11.2 x 13 x 13 cm
Yellow: 11.6 x 12 x 12 cm
A set of two

AN-CE_19_006



William J. O'Brien
“Untitled”, 2013
Ceramic
130.8 x 55.9 x 53.3 cm (51.5 x 22 x 21 inches)

WOB-CE_13_0048



William J. O'Brien
“Untitled”, 2013
Ceramic
12 x 9 x 9 inches /
30.5 x 22.9 x 22.9 cm

WOB-CE_13_0066



William J. O'Brien
“Untitled”, 2013
Ceramic
17 x 14 x 9 inches /
43.2 x 35.5 x 22.9 cm

WOB-CE_13_0249



William J. O'Brien
"Untitled", 2017
Ceramic
48.3 x 30.5 x 15.2 cm (19 x 12 x 6 inches)

WOB-CE_17_0440



William J. O'Brien
"Untitled", 2017
Ceramic
63.5 x 38 x 27.9 cm (25 x 15 x 11 inches)

WOB-CE_17_0478



Sterling Ruby
"HEART (6880)", 2018
Ceramic
53.3 x 39 x 5.1 cm

SR-CE_18_6880



Kouzo Takeuchi
"Modern Remains Thunderbolt", 2017
Porcelain (metal, glue)
105 x 59.4 x 27.5 cm

KOT-CE_17_001



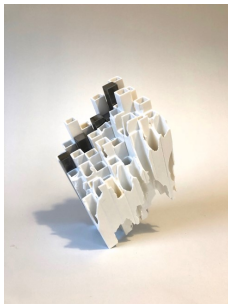
Kouzo Takeuchi
“Modern Remains Teardrop”, 2018
Porcelain, glass (glue)
37.2 x 42.8 x 48.6 cm

KOT-CE_18_001



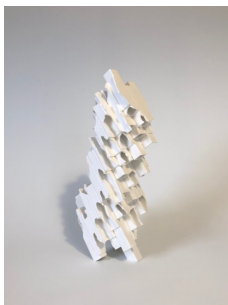
Kouzo Takeuchi
“Modern Remains Reason”, 2019
Porcelain, wood (metal, glue)
66.2 x 32.2 46.3 cm

KOT-CE_19_001



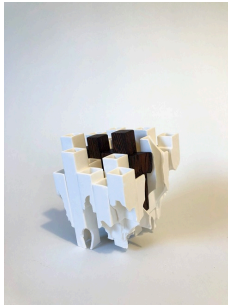
Kouzo Takeuchi
“Modern Remains Deco”, 2019
Porcelain, iron
25 x 16 x 15 cm

KOT-CE_19_002



Kouzo Takeuchi
“Modern Remains Tower”, 2019
Porcelain
32 x 13 x 9 cm

KOT-CE_19_003



Kouzo Takeuchi
“Modern Remains Path”, 2019
Porcelain, wood
13 x 11 x 10 cm

KOT-CE_19_004