

Matthew Zivich
Empires & Enclaves

February 10 - March 25, 2017
Opening Friday, February 10, 6-9 PM



What Pipeline is happy to present *Empires & Enclaves*, a selection of paintings and sculptures by Matthew Zivich. Works include the “Architectural Model” sculptures from the late 1980s and the caulk painting series, “Leviathans,” from 2000-2009.

“The five architectural models date from approximately 1987 to 1989 and appear to be typical examples of preliminary, scale-model buildings. Included are representations of iconic modern structures such as Mies van der Rohe’s *860 Lake Shore Drive* and Phillip Johnson’s *Glass House*; and an anonymous government building from Munich during the Third Reich. Fictitious structures include a cenotaph for Mussolini made for an imaginary competition sponsored by the city of Milan, Italy, celebrating the 50th anniversary of Il Duce’s death; and finally, *Enclaves* is an urban depiction initially inspired by the bombardment of Sarajevo during the breakup of Yugoslavia.

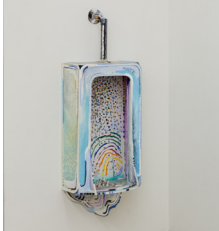
The caulk paintings in the “Leviathan” series represent warships that were instrumental as precursors to revolution or invasion, created using a non-traditional medium such as household caulk. Included in this series are *Untitled (Potemkin)*, *Untitled (Aurora)*, *Untitled (Maine)*, and *Untitled (Mystery Sub)*.” - Matthew Zivich

Matthew Zivich (b. 1937, East Chicago, IN) is a Professor of Art at Saginaw Valley State University. He received a MFA from Indiana University in 1964 where he studied with William Bailey and James McGarrell. He has been a frequent exhibitor and prize winner in regional exhibits including at the Work:Detroit and Work:Ann Arbor galleries, and has been a winner of several University of Michigan Alumni Show jury prizes including a top award at the 2016 exhibit.

Matthew Zivich
Empires & Enclaves

February 10 - March 25, 2017
Opening Friday, February 10, 6-9 PM

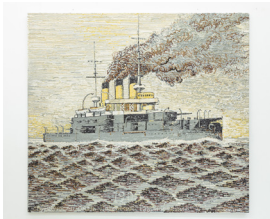
Clockwise from left of entrance:



Untitled (Urinal), 1987
Acrylic on foam core
17.5 x 13.5 x 50 in.



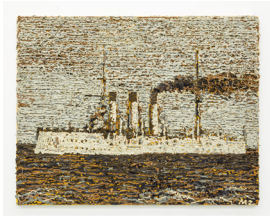
Untitled (The Milano Competition), 1989
Wood, illustration board, wire on foam core
21 x 31 x 16.125 in.



Untitled (Potemkin), 2007
Caulk on canvas
60 x 54 in.



Untitled (Glass House), 1989
Acrylic, HO scale figures, plexiglas on foam core
22.375 x 30.5 x 15.125 in.



Untitled (Aurora), 2009
Caulk on canvas
22 x 28 in.



Untitled (Maine), 2008
Caulk on canvas
22 x 28 in.



Enclaves, 1989
Acrylic, collage, wood, mixed media on foam core
20.25 x 29.25 x 22.25 in.



Untitled, 1989
Acrylic, HO scale figures, collage on foam core
34.375 x 41 x 16 in.



Untitled (Mystery Sub), 2009
Caulk and acrylic on canvas
22 x 24.75 in.



Untitled (860 Lakeshore Drive), 1989
Acrylic, wood, collage, HO scale figures on foam core
27.125 x 30.5 x 35.5 in.