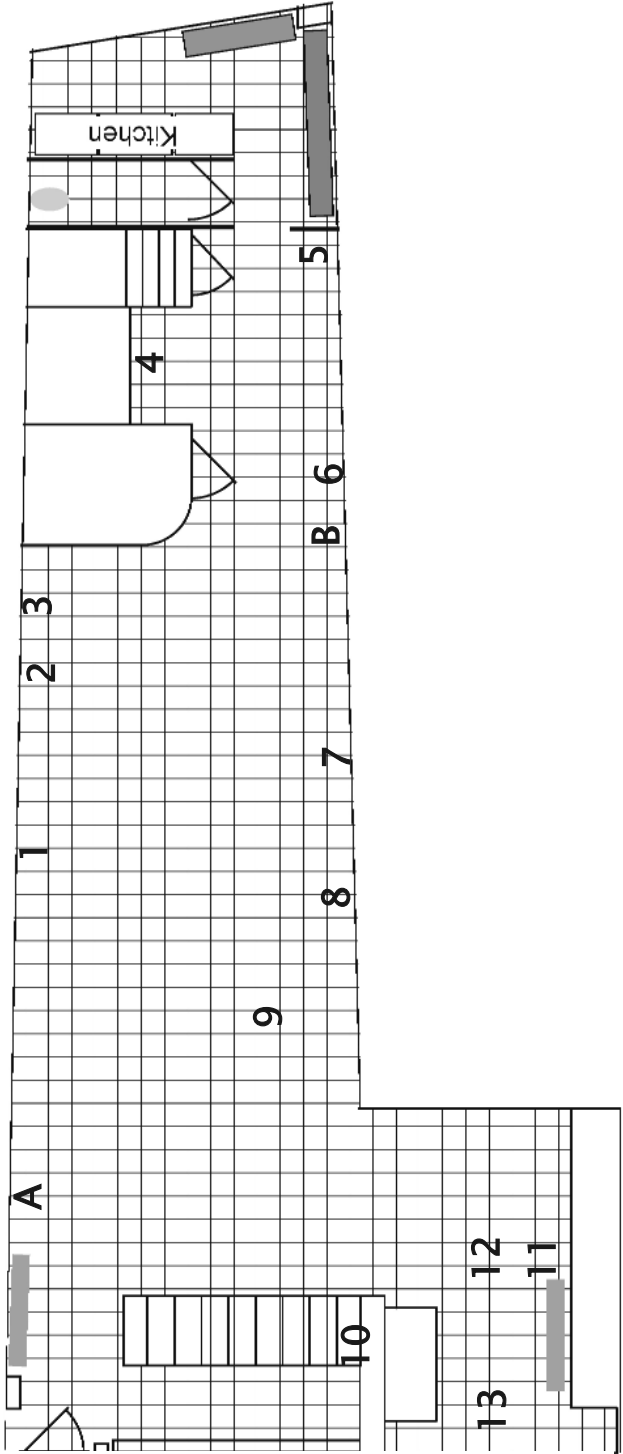
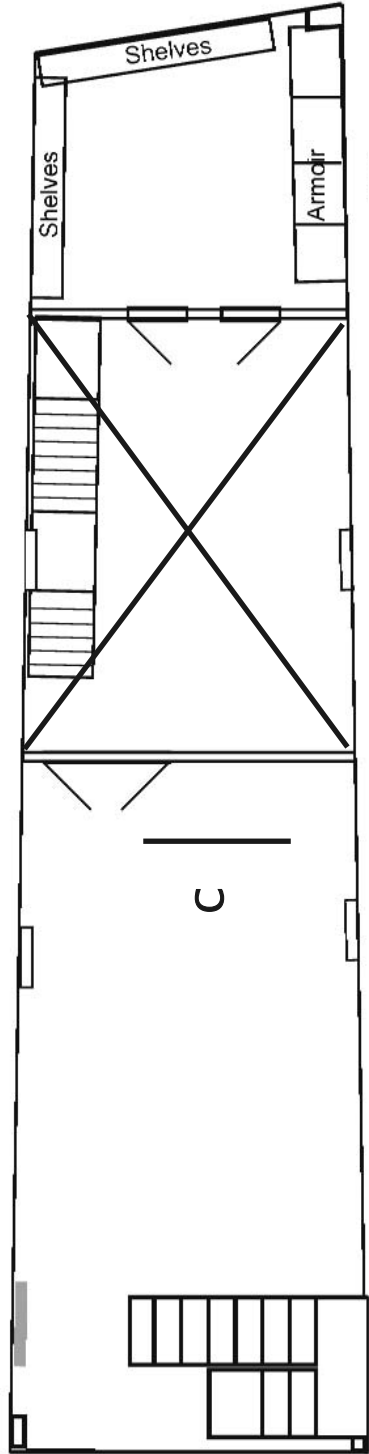


GROUND FLOOR



BASEMENT



Shuzo Azuchi Gulliver

1. *Body contract*, 1973–
print on paper, five sheets (Japanese, English, Dutch,
German, Italian)
420 x 297 mm each
2. Reference materials about the project 'Body contract'
2010
inkjet on photo paper, two sheets (installation views at
Museum of Modern Art, Shiga, Japan)
430 x 323 mm each
3. *Study files about the 'action after death' (in response
to Yuki Okumura's request)*, 2014
Two file folders
308 x 245 x 15 mm each
4. *Broken promise*, 1982
mixed media
326 x 290 x 42 mm
5. Reference materials about 'Weight (Human ball) '
inkjet on photo paper (installation view at Museum of
Modern Art, Shiga, Japan), 2010
The stain-less steel ball has the same weight as the
artist's body at the time of its production (nine balls
were created from the late 70s to the early 90s; the year
of the particular one in this photo is unclear). The total
weight of the pile of the books has the same weight as
the artist's body, too, as of its installation in 2010.
6. Photographs of 'Body Contract: Failed Backstage Deal
of the Body-1', 'Body Contract: Failed Backstage Deal of
the Body-2,' and the invitation card for the performance
1984
inkjet on photo paper
178 x 298 mm; 200 x 246 mm; 93 x 143 mm
7. *I gift you with all the sounds 'mu' that I pronounce
from now on.*, 2014
pencil and inkjet on paper
210 x 297 mm
(to be given to Yuki Okumura)
8. *Pneuma-01*, 2014
Acrylic on canvas
400 x 545 mm
9. *I gift you with all the sounds 'shi' that I pronounce
from now on.*, 2014
laser print on paper
297 x 840 mm
(Each visitor can take a sheet)
10. *Intention / Description with handle (Brussels ver-
sion)*, (1992-) 2014
mixed media
200 x 500 x 140 mm
11. *24 Aug. 2047*, 2014
inkjet on canvas
225 x 330 mm
12. *Untitled*, 2014
inkjet on canvas
345 x 410 mm
13. *L • C • 4*, (1968-) 2014
typing on paper (enlarged photocopy)
1184 x 841 mm

Yuki Okumura

- A. *Archived Web Announcement: Body Contract (Excep-
tional Case)*, 2014
laser print on paper mounted on aluminum, two sheets
913 x 645 mm each
- B. *How about playing dead after you die? (an idea for
the promised posthumous performance by Shuzo
Azuchi Gulliver)*, 2014
laser print on paper mounted on aluminum
913 x 645 mm
- C. *Body Contract (Exceptional Case)*, 2014
HD video 110 minutes
(screened twice a day from 2 pm / 4pm)
Made in collaboration with Shuzo Azuchi Gulliver