

ALTMAN SIEGEL

1150 25TH ST. SAN FRANCISCO, CA 94107

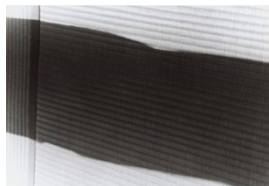
tel: 415.576.9300 / fax: 415.373.4471

www.altmansiegel.com

Cascadence

Terry Adkins, Theresa Hak Kyung Cha, John T. Gast, and Brandon Ndife
Organized by K.R.M. Mooney and McIntyre Parker
March 9 – April 24, 2021

Gallery 2



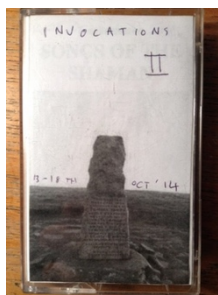
Theresa Hak Kyung Cha
from Exilee (Photographs), 1980
Black and white photographs
8 x 10 in
20.3 x 25.4 cm
(M-PH80-04)



Theresa Hak Kyung Cha
from Exilee (Photographs), 1980
Black and white photographs
8 x 10 in
20.3 x 25.4 cm
(M-PH80-06)



Brandon Ndife
Nightshade Sidetable, 2021
Birch, earth pigments, various organic matter, cast
AquaResin, enamel, urethane resin, aluminum
26 x 26 x 13 in
66 x 66 x 33 cm
(M-S21-02)



John T. Gast
Invocations II, 2014
Two cassette tapes, mp3 file, website link
49:59
(M-S14-01)

ALTMAN SIEGEL

1150 25TH ST. SAN FRANCISCO, CA 94107

tel: 415.576.9300 / fax: 415.373.4471

www.altmansiegel.com



Terry Adkins

Tambour, 2013

Lace, tambourine, and music stand

59 x 18 x 18 in

149.9 x 45.7 x 45.7 cm

(M-S13-04)



Theresa Hak Kyung Cha

from Exilee (Photographs), 1980

Black and white photographs

8 x 10 in

20.3 x 25.4 cm

(M-PH80-05)



Theresa Hak Kyung Cha

Monologue, 1977

Typewritten text on paper

11 x 8 1/2 in

27.9 x 21.6 cm

(M-T77-01)



Theresa Hak Kyung Cha

from Exilee (Photographs), 1980

Black and white photographs

8 x 10 in

20.3 x 25.4 cm

(M-PH80-03)



Theresa Hak Kyung Cha

from Exilee (Photographs), 1980

Black and white photographs

8 x 10 in

20.3 x 25.4 cm

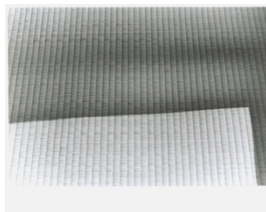
(M-PH80-07)

ALTMAN SIEGEL

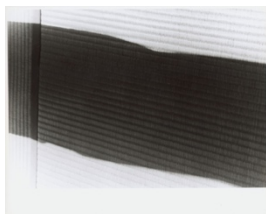
1150 25TH ST. SAN FRANCISCO, CA 94107

tel: 415.576.9300 / fax: 415.373.4471

www.altmansiegel.com



Theresa Hak Kyung Cha
from Exilee (Photographs), 1980
Black and white photographs
8 x 10 in
20.3 x 25.4 cm
(M-PH80-08)



Theresa Hak Kyung Cha
from Exilee (Photographs), 1980
Black and white photographs
8 x 10 in
20.3 x 25.4 cm
(M-PH80-09)



Brandon Ndife
Nantucket, 2021
Cast Aqua resin, earth pigment, enamel, wood, rubber
25 x 49 x 7 in
63.5 x 124.5 x 17.8 cm
(M-S21-01)