

Liz Deschenes / Sol LeWitt

Organized in collaboration with Olivier Renaud-Clement

September 11 – October 23, 2016

CHECKLIST

SOL LEWITT

Black over Map of Manhattan, 1992

Ink on photograph

20 x 16 inches (50.8 x 40.6 cm)

Framed Dimensions:

25 1/4 x 19 1/4 x 1 inches (64.1 x 48.9 x 2.5 cm)

Signed and dated bottom right

[LEW1001.92]



Black over Map of Manhattan, 1992

Ink on photograph

20 x 16 inches (50.8 x 40.6 cm)

Framed Dimensions:

25 1/4 x 19 1/4 x 1 inches (64.1 x 48.9 x 2.5 cm)

Signed and dated bottom right

[LEW1002.92]



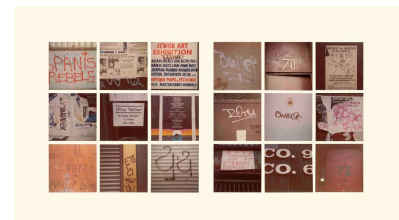
On the Walls of the Lower East Side, 1979

Color photographs mounted on board

18 1/8 x 15 inches (46 x 38.1 cm) 73 pages;

1 page at 15 7/8 x 15 inches (40.3 x 38.1 cm)

[LEW1000.79]



LIZ DESCHENES

Untitled (LeWitt) #6-14, 2016

Photogram

9 parts, each:

40 x 40 x 1 3/4 inches (101.6 x 101.6 x 4.4 cm)

Overall dimensions: 122 1/2 x 122 7/8 x 1 3/4 inches (311.2 x 312.1 x 4.4 cm)

[LD1323.16]



Stereograph #27, 2016

Silver toned photogram mounted on Dibond

Two parts, each:

84 x 5 inches (213.4 x 12.7 cm)

[LD1325.16]

