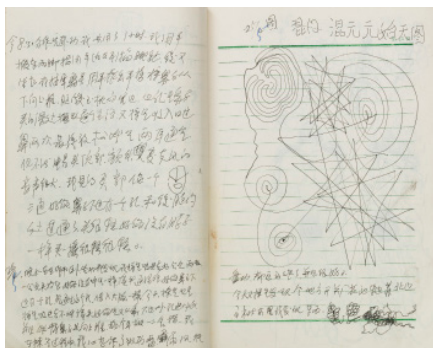


Guo Fengyi: To See from a Distance

February 20–May 10, 2020

For further information and images, please contact
Allison Underwood, Director of Communications
212 219 2166 x119 | aunderwood@drawingcenter.org



Journal Vol. 3 (Provincial Qigong Practice Workshop),
1989

Notebook

10 1/2 x 7 1/4 inches (26.5 x 18.8 cm)

Courtesy of Long March Space

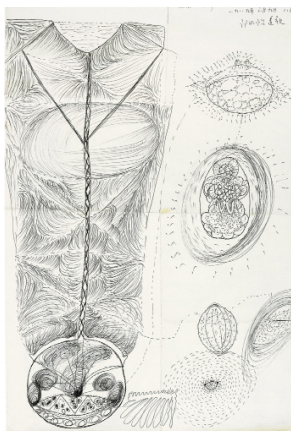


The Buddha in the Underground Palace of the Giant
Wild Goose Pagoda, 1989

Ink on calendar paper

29 x 20 inches (73.4 x 50.6 cm)

Courtesy of Long March Space

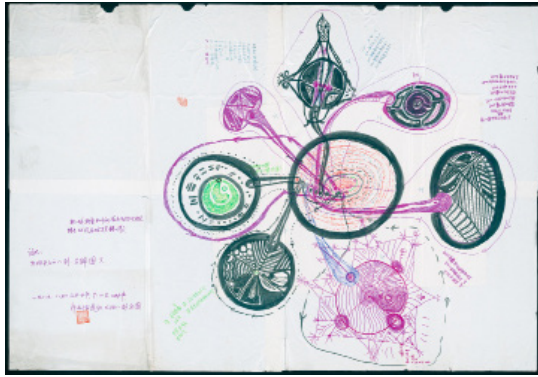


Mystery of the Bermuda Triangle, 1989

Ink on glazed printing paper

27 1/2 x 20 inches (70 x 50.5 cm)

Courtesy of Long March Space



Bagua Diagram of the Sun Seen from a Distance, 1989

Color ink on paper
59 x 41 inches (149.5 x 103.7 cm)
Courtesy of Long March Space



Fengshui Diagram of the Moon Seen from a Distance, 1989

Color ink on calendar paper
Polygonal work measured counterclockwise:
85 1/4 x 60 1/4 x 19 1/4 x 37 1/4 x 54 x 25
1/2 inches (216.4 x 152.8 x 49 x 94.5 x 137 x
65 cm)
Courtesy of Long March Space



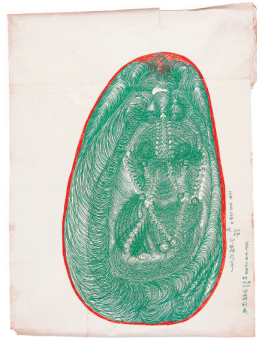
Asking the Master How Many People Have Natural Superpower, 1990

Color ink on calendar paper
74 x 34 1/2 inches (187.5 x 88.2 cm)
Courtesy of Long March Space

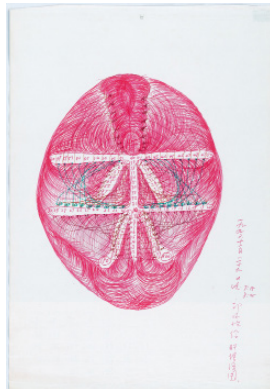


Four Diagrams of the Divination Procedures in Zhu Xi's The Basics of I Ching, 1990

Color ink on rice paper
48 x 35 inches (122 x 89cm)
Courtesy of Long March Space



Ear, 1990
Color ink on calendar paper
39 1/4 x 30 inches (99.5 x 75 cm)
Courtesy of Long March Space



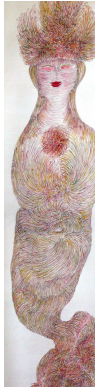
The Diagram of the Liver Meridian, 1990
Color ink on paper
30 1/2 x 20 1/2 inches (77.3 x 52.3 cm)
Courtesy of Long March Space



Fetus, 1989
Color ink on calendar paper
31 1/2 x 21 inches (79.7 x 53.5 cm)
Courtesy of Long March Space



The Sixth Anniversary of Guo Fengyi's Qigong Practice, 1995
Color ink on rice paper
102 x 27 1/2 inches (259 x 69.5 cm)
Courtesy of Long March Space



Lugu Lake on June 5th, 2002
Color ink on rice paper mounted on cloth
105 1/2 x 26 1/2 inches (268 x 67.5 cm)
Courtesy of Long March Space



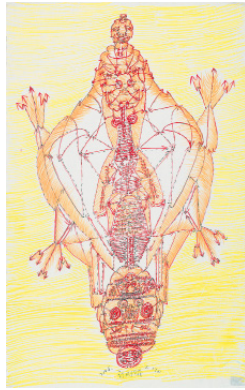
Huangdi Mausoleum, 1996
Color ink on rice paper
100 1/4 x 26 inches (254.4 x 66 cm)
Courtesy of Long March Space



Caishen (God of Wealth), 2001
Color ink on rice paper
108 1/4 x 27 1/2 inches (275 x 70 cm)
Courtesy of Long March Space



How is Guo Fengyi's Head, 1995
Color ink on rice paper
53 1/2 x 27 1/4 inches (136.5 x 69 cm)
Collection of Amy Gold and Brett Gorvy

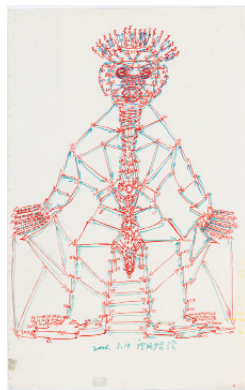


Organization Method of Human Numeric,
2006

Color ink on blueprint paper

55 x 34 1/2 inches (140 x 87.8 cm)

Courtesy of Long March Space



Organization Diagram of Human Numeric,
2006

Color ink on blueprint paper

55 x 34 1/2 inches (140 x 87.8 cm)

Courtesy of Long March Space



Fengshui of Yan'an, 2006

Color ink on blueprint paper

55 x 34 1/2 inches (139.5 x 87.7 cm)

Courtesy of Long March Space



Jesus, 1991

Ink on hanging cloth scrol

65 x 22 1/4 inches (165 x 56.8 cm)

Courtesy of Long March Space



Virgin Mary, 1991
Ink on hanging cloth scrol
65 x 22 1/2 inches (165 x 56.8 cm)
Courtesy of Long March Space

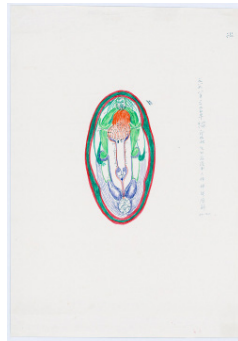


Diagram of the Human Nervous System, 1989
Color ink on glazed printing paper
30 1/2 x 21 1/4 inches (78 x 54 cm)
Courtesy of Long March Space

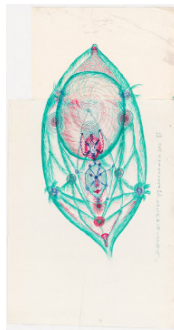


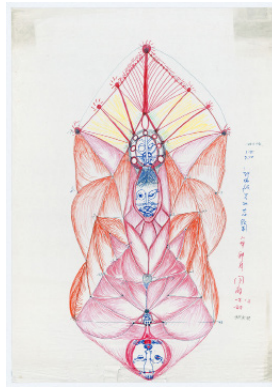
Diagram of Tianmu Acupoint, 1989
Color ink on blueprint paper
Composed of two sheets:
34 x 25 1/2; 13 1/2 x 21 1/4 inches (86.5 x 64.8 cm; 34.5 x 54 cm)
Courtesy of Long March Space



Little Old Man, 1989
Color ink on calendar paper
58 1/2 x 21 1/4 inches (149 x 54 cm)
Courtesy of Long March Space



Male Female, 1989
Color ink on glazed printing paper
30 1/2 x 21 1/4 inches (78 x 54.2 cm)
Courtesy of Long March Space



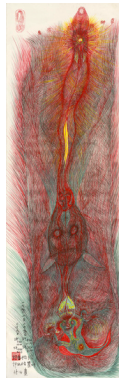
*Diagram of the Human Nerves Ten Thousand
Twenty Thousand One Hundred Thousand*,
1989
Color ink on glazed printing paper
36 1/2 x 25 1/2 inches (93 x 65 cm)
Courtesy of Long March Space



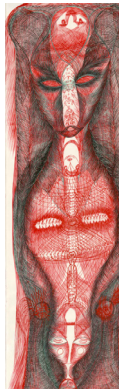
*Diagram of the Primordial Positioning of the 64
Hexagrams*, 1990
Color ink on glazed printing paper
15 1/2 x 21 1/4 inches (39 x 54 cm)
Courtesy of Long March Space



Shouxing (God of Longevity), 1990
Color ink on calendar paper
41 1/2 x 20 1/2 inches (106 x 52.4 cm)
Courtesy of Long March Space



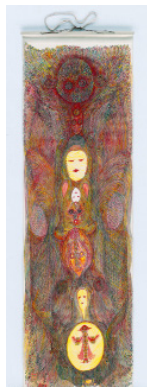
What is Guo Fengyi's Painting Called, 1992
Color ink on hanging rice-paper scroll
60 1/2 x 17 1/2 inches (154 x 44.2 cm)
Courtesy of Long March Space



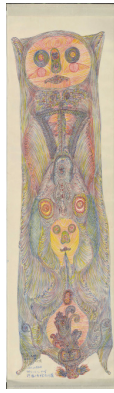
Numeric Code, 1992
Color ink on hanging rice-paper scroll
61 x 17 1/2 inches (155.2 x 44.3 cm)
Courtesy of Long March Space



Level of Guo Fengyi's Qigong Practice, 1992
Color ink on hanging rice-paper scroll
62 x 17 1/4 inches (157.4 x 44 cm)
Courtesy of Long March Space



Shifu (Master), 1993
Color ink on hanging rice-paper scroll
58 x 18 inches (147 x 45.4 cm)
Courtesy of Long March Space



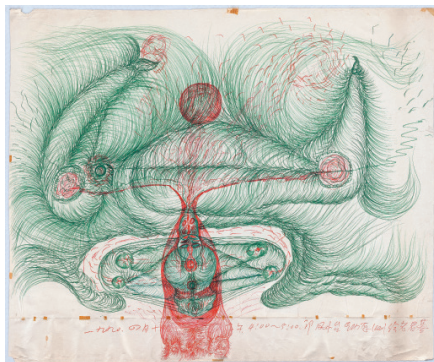
Ancient River, 1993
Color ink on hanging rice-paper scroll
61 1/2 x 17 inches (156 x 43 cm)
Private Collection, New York



How to Do It, 1994
Color ink on hanging rice-paper scroll
61 x 17 inches (154.5 x 43 cm)
Courtesy of Long March Space



Who is Guo Fengyi, 1993
Color ink on hanging rice-paper scroll
60 1/2 x 17 inches (154 x 43 cm)
Courtesy of Long March Space



The Grave of Lao Jun (Lao Zi), 1990
Color ink on glazed printing paper
39 1/2 x 48 inches (100.5 x 121.4 cm)
Collection of Amy Gold and Brett Gorvy



Natural Superpower Black Mudra, 1990
Ink on rice paper mounted on cloth
43 1/2 x 27 1/2 inches (110.8 x 70.4 cm)
Courtesy of Long March Space