
THE NEWSSTAND PROJECT

FOR IMMEDIATE RELEASE:

MATT HOPE
SLEIGHT OF HAND

ORGANIZED BY ALEXIS HYDE



FEBRUARY 17 - MARCH 23, 2019

PUBLIC RECEPTION SUNDAY, FEBRUARY 17, 11:00AM - 1:30PM

THE NEWSSTAND PROJECT - KINGS ROAD CAFÉ
8361 BEVERLY BLVD, LOS ANGELES, CA. 90048

ON VIEW BY APPOINTMENT
PLEASE CONTACT **INJINASH UNSHIN**
AT INJINASH.UNSHIN@GMAIL.COM

MATT HOPE
SLEIGHT OF HAND
AT THE NEWSSTAND PROJECT

PRESS RELEASE:

THE NEWSSTAND PROJECT is pleased to present *SLEIGHT OF HAND*, an exhibition of recent work by London-born, Beijing-based artist MATT HOPE, organized by Alexis Hyde. *SLEIGHT OF HAND* will be on view by appointment at **8361 Beverly Boulevard, Los Angeles, CA. 90048** from **February 17 to March 23, 2019**, with a public reception to be held on **Sunday, February 17 from 11:00am - 1:30pm.**

SLEIGHT OF HAND features selected recent drawings and sculptures from Hope's expansive and enigmatic artistic practice, one consistently in conversation with aspects of architecture, engineering, industry, and technology. On view during this exhibition are a collection of intricate drawings hand-rendered onto paper through a digitally-derived image generation process. For their inception, Hope generates and manipulates three-dimensional models and spaces using various computer-aided design softwares. He subsequently hand-translates these digital compositions into two-dimensional drawings via a labyrinthian, draftsman-like mark making methodology. Intricate yet restrained, Hope's drawings merge organic and synthetic imagery in fictitious extra-dimensional spaces, folding recognizable motifs into hallucinatory, yet unified scenarios.

Hope describes the exhibition title, *SLEIGHT OF HAND*, as "a slight play on words... *slighting* referring to the destruction of a castle [in Old English]. The drawings feature many scenes of decay and ruin, or blatant destruction, and synthetic hands, and robotic arms... [the employed digital processes being] a kind of technological threat to the artist's hand via automated image generation techniques and thinking."

Also in *SLEIGHT OF HAND* are two cast steel sculptures from a series of enlarged facsimiles of common construction tools, originally created in 2010 by a clandestine Chinese aerospace parts manufacturer. Acting as minimalist monuments to the engineering feats of the recent past, Hope examines these tools' practical beauty by highlighting their Platonic form via contemporary fabrication techniques. Stark and unforgiving, Hope's sculptures continue the ever-expanding post-minimal approach to art making. He utilizes twenty-first century industrial machine production techniques to construct towering meta-replicas of the very tools used during the process of their own creation.

MATT HOPE
SLEIGHT OF HAND
AT THE NEWSSTAND PROJECT

MATT HOPE (born 1976, London, U.K.) lives and works in Beijing, China. Hope received his M.F.A. from the University of California, San Diego in 2004. Selected recent solo exhibitions include *Art Lights up Life: People's Power Station – Lighting Up Project*, Guangzhou, China, 2016; *Sun Dragon Hardware*, Ace Gallery, Los Angeles, 2015; and *Spectrum Divide*, Saamlung Gallery, Hong Kong, China, 2012. Selected recent group exhibitions include *Desert Island - Epicenter Projects*, Coachella Valley Art Center Indio, California, 2017; *Shenzhen Biennale of Contemporary Art*, Shenzhen, China, 2017; *BI-City Biennale of Urbanism\Architecture*, Shenzhen, China, 2016; *BOOSTER: Art Sound Machine*, MARTA Herford Contemporary Art Museum, Herford, Germany, 2016; *The Solutions, International Design Exhibition*, Chengdu Biennale, Chengdu, China, 2011; and *What if, Beijing International Design Triennial*, China National Museum, Beijing, China, 2011.

MATT HOPE
SLEIGHT OF HAND
AT THE NEWSSTAND PROJECT

1



Beat After
2018
45.63h x 56.25w x 1.5d in. framed
Ink on paper
USD 35,000

2



Hexidecimal
2017
41.5h x 53.25w x 1.5d in. framed
Ink on paper
USD 40,000

3



Static Equilibrium (Wrench)
2010 - 2011
47.24h x 23.62w x 3.15d in.
Machined, sanded stainless steel
USD 12,000

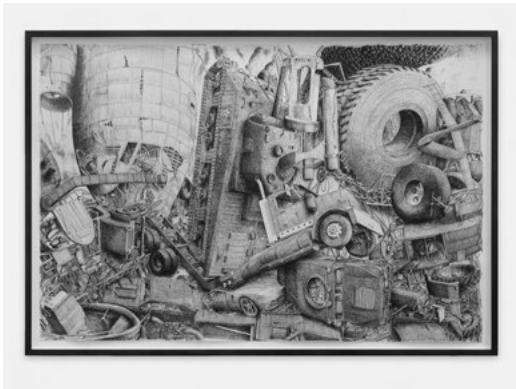
4



Pounds Per Square Inch (Clamp)
2010 - 2011
35.43h x 23.62w x 3.54d in.
Machined, sanded stainless steel
USD 9,000

MATT HOPE
SLEIGHT OF HAND
AT THE NEWSSTAND PROJECT

5



Metaconglomerate

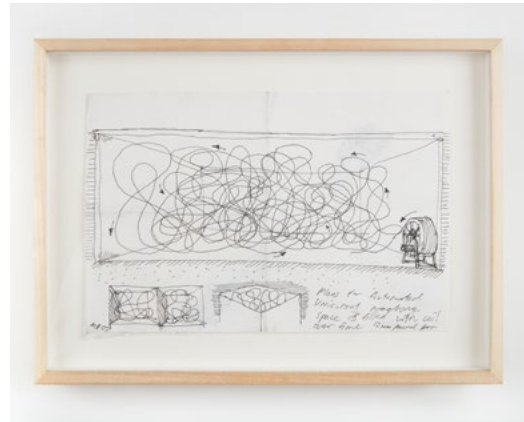
2017

25.75h x 37.5w x 1.75d in. framed

Ink on paper

USD 25,000

6



Plans for automated ...

2007

8.50h x 11.10w x 1.5d in. framed

Ink on paper

USD 2,000

7



Pointless machines

2000

9.25h x 19.50w x 1.5d in. framed

Ink on paper

USD 3,000

8



Low polygon pylon

2007

10.63w x 8.25h x 1.5d in. framed

Ink and crayon on paper

USD 2,000

MATT HOPE
SLEIGHT OF HAND
AT THE NEWSSTAND PROJECT

9



Low polygon pylon
2007
9h x 11.50w x 1.5d in. framed
Ink and crayon on paper
USD 2,000

10



Machine to catch the energy of a rock slide
2008
8.38h x 10.63w x 1.5d in. framed
Ink on paper
USD 2,000