

JTT
170a SUFFOLK STREET
NEW YORK NY 10002
212-574-8152

Anna-Sophie Berger

KE-17 JIGSAW
KE-03 LARGE PINKING
KE-24 SCALLOP
KE-16 POSTAL

January 26 - February 23, 2014

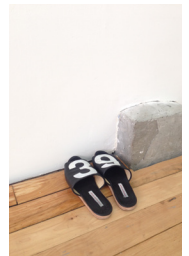
soft (red), 2014
digital print on Dibond
25 x 33.3 inches
Bas-2014-009
unique



SOFTX, 2014
digital print on silk twill, thread
25 x 33.3 inches (variable)
Bas-2014-010
unique

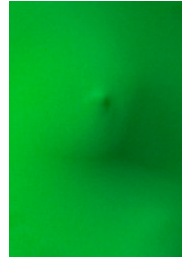


39, 2013
black leather, silkscreen
3 x 10.5 x 4.25 inches
Bas-2013-017
open edition



JTT
170a SUFFOLK STREET
NEW YORK NY 10002
212-574-8152

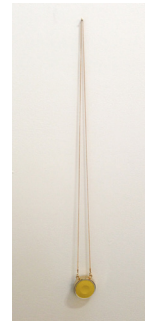
medium (green), 2014
digital print on Dibond
31 x 46.5 inches
Bas-2014-013
unique



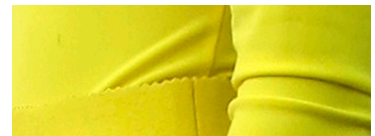
40, 2013
white leather, silkscreen
2.25 x 10.5 x 4.5 inches
Bas-2013-018
open edition



gelb, 2014
Pelikan Watercolor, gold coated rhodium pendant, chain
1.38 x 1.38 inches + chain
Bas-2013-023
open edition



ultraflex (yellow), 2014
digital print on Dibond
70 x 25.9 inches
Bas-2014-015
unique



JTT
170a SUFFOLK STREET
NEW YORK NY 10002
212-574-8152

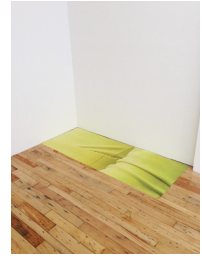
ULTRAFLEXX, 2014

digital print on silk twill, thread

70 x 25.9 inches (variable)

Bas-2014-016

unique



untitled (nato), 2014

ten nylon strips, silkscreen

49 x 38 inches (variable)

Bas-2014-035

unique



40, 2013

black leather, silkscreen

2.75 x 10.75 x 4 inches

Bas-2013-019

open edition



HARDX, 2014

digital print on silk twill, thread

40 x 40 inches (variable)

Bas-2014-012

unique



JTT
170a SUFFOLK STREET
NEW YORK NY 10002
212-574-8152

hard (blue), 2014
digital print on Dibond
40 x 40 inches
Bas-2014-011
unique



gelb grün, 2014
Pelikan Watercolor, gold coated rhodium pendant, chain
1.38 x 1.38 inches + chain
Bas-2013-024
open edition



MEDIUMX, 2014
digital print on silk twill, thread
31 x 46.5 inches (variable)
Bas-2014-014
unique

