

KYLE DUNN

The Fool

11 June / 24 July 2021



GALERIE MARIA BERNHEIM
THE FOOL.

Galerie Maria Bernheim is delighted to announce their first solo show of American artist Kyle Dunn at our gallery in Zurich. This exhibition entitled 'The Fool' furthers the artist's interest in the human form evolving within evocative landscapes.

This new group of work proposes a dialogue between two different media: his acclaimed bas-relief sculptures and paintings on wooden panels.

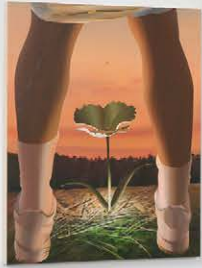
Dunn's paintings address the anxieties of the contemporary moment, with an emphasis on our relationship to the deteriorating natural environment and the contradictory ways we live in spite of this knowledge.

Several sets of contrasting paired works imply a swinging between extremes. In *The Santa Anas*, Dunn evokes the wind that comes down from the mountains in Southern California that heralds fire season and is rumored to cause madness; the flower represents an evil spirit receiving its energy from the orange fiery sky rather than the sun. Its pendant, *Insomniac*, shows a more meditative scene. Here the moon exerts a tidal-like gravity on a domestic interior where a sleepless figure lays awake, accompanied by the glow of his distracting smartphone. Elsewhere the yellow and red figures displayed as a diptych--The Fool pair--gleefully prance through apocalyptic landscapes, seemingly unaware of or indifferent to their surroundings. Towering over the landscape, they imply the Angel and the Devil sitting atop our collective shoulders, a Janus figure on two

sides of the same coin, framing the exhibition as an introspective space.

The architectural elements and sceneries that punctuate each painting transform the gallery into a large landscape. The wild fires seem to be catching up with the protagonists, the lone rudimentary rural houses simultaneously evoking American expansion and decline. Instead of standing at the edge, the viewer is standing in an open field, observing the periphery, the outsiders, the forms and figures that cross over into our reality.

Kyle Dunn (b. 1990) lives and works in Brooklyn, NY. He grew up in Michigan and received his BFA in Interdisciplinary Sculpture at Maryland Institute College of Art (MICA). His solo *Into Open Air* opened at PPOW in 2020, preceded by Thierry Goldberg Gallery, 2018, in New York and Dunn has been included in group exhibitions at Galerie Maria Bernheim, Zurich; Little Berlin, Philadelphia, PA; Nationale, Portland, OR; Part 2 Gallery; Oakland, CA; and Ground Floor Gallery, Brooklyn, NY.



AL ERIE MARA DE SNHEIN

Piss Flower, 2021

Acrylic on wooden panel
101.6 x 76.2 cm
40 x 30 in

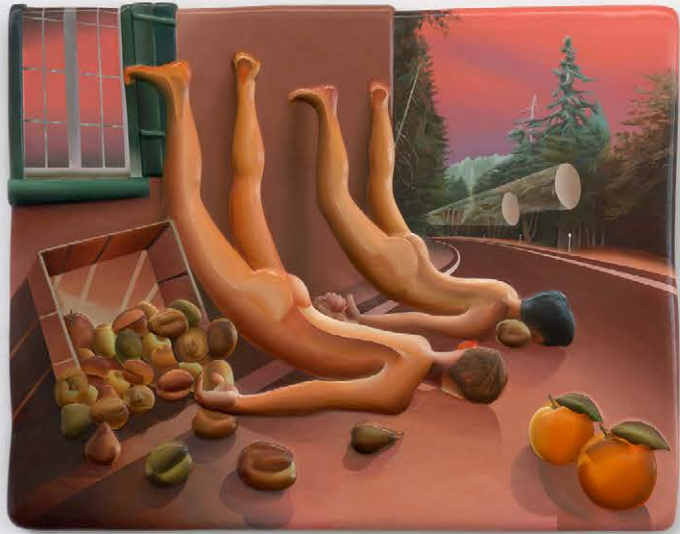








Law of Desire (still), directed by Pedro Almodóvar, Spain 1987





Pact, 2020

*Acrylic on epoxy resin, plaster, and foam
panel*

121.9 x 152.4 x 5.1 cm
48 x 60 x 2 in









The Santa Anas, 2021

Acrylic on wooden panel

121.9 x 91.4 x 5.7 cm

48 x 36 x 2 1/4 in







Wildfire in California, USA





Forager, 2021

Acrylic on wooden panel
121.9 x 182.9 x 5.7 cm
48 x 72 x 2 1/4 in







The Fool, 2021

Acrylic on wooden panel
152.4 x 121.9 x 6.3
cm 60 x 48 x 2 1/2 in







The Fool II, 2021

Acrylic on wooden panel
152.4 x 121.9 x 6.3 cm
60 x 48 x 2 1/2 in











Highway Landscaper, 2021

Acrylic on wooden panel

76.2 x 101.6 cm

30 x 40 in





Left: detail, Alphonse Mucha, *Topas*, lithography, 1897
Right: *A Still Life of Fruit, Grapes and Foliage, with Flies and Butterflies*, Jan Mortel (c.1650-1719), National Trust, East Riddlesden Hall

Golden Hour, 2021

Acrylic on board, framed

50 x 38 cm

19 3/4 x 15 in







Hope, 2021

*Acrylic on foam and resin panel
121.9 x 114.3 cm; 48 x 45 in*









Insomniac, 2021

Acrylic on wooden panel

121.9 x 91.4 x 5.7 cm

48 x 36 x 2 1/4 in





Kyle Dunn, b. Livonia, MI, 1990
Lives and works in Queens, NY

Body Double, Galerie Maria Bernheim, London,
UK

2019

Cruise Kidman Kubrick, Galerie Maria Bernheim,
Zurich, Switzerland

Do You Love Me?, PPOW Gallery, New York, USA

Body Parts, Galerie Maria Bernheim, Zurich,
Switzerland

2018

A Scratch in Time, Thierry Goldberg Gallery,
New York, USA

RE_ARRANGE, Juxtapoz Projects at Mana

Contemporary, Jersey City, USA

Skins, Greenpoint Terminal Gallery, Brooklyn,
USA

Hickey, Little Berlin, Philadelphia, USA

Thick on the Ground, 2 person show with

Christian Rogers at NATIONALE, Portland, USA

Interrupting Lines, Pt.2: Gallery, Oakland,
USA

Strange Looks, Gildar Gallery, Denver, USA

Fugue, Honey Ramka, Brooklyn, USA

AWARDS, RESIDENCIES and GRANTS

2014

Elizabeth Greenshields Full Grant Recipient,

SOLO EXHIBITIONS

2021

The Fool, galerie Maria Bernheim, Zurich,
switzerland

2020

Into Open Air, P.P.O.W., New York, NY, USA

2018

Always, Thierry Goldberg Gallery, New York, USA

Night In, Julius Caesar, Chicago, USA

2017

Leaves Don't Thank the Sun, Sardine, Brooklyn, USA

GROUP EXHIBITIONS

2021

Montréal, QC, Canada

2014

Elizabeth Greenshields Full Grant Recipient,
Montréal, QC, Canada

2013

Artist in Residence at The Woodstock Byrdcliffe
Guild, hosted by The Pollock-Krasner Foundation,
Woodstock, NY, United States

PUBLIC COLLECTION

Sunpride Foundation, Hong Kong

EDUCATION

2012

BFA Interdisciplinary Sculpture at Maryland
Institute College of Art (MICA), United States

2011

Option SCIE at La Haute Ecole d'art et de design
de Genève (HEAD), Switzerland

GALERIE MARIA BERNHEIM

MARIA BERNHEIM

maria@mariabernheim.com
+41 79 700 79 28

ILARIA VINCI

ilaria@mariabernheim.com
+41 78 302 31 33

COSTANZA COCUZZA

costanza@mariabernheim.com
+44 (0)75 51 454 659

5 Mount St, Mayfair, London W1K 3NE, United Kingdom / Rämistrasse 31, 8001 Zurich, Switzerland

+41 79 700 79 28 - www.mariabernheim.com