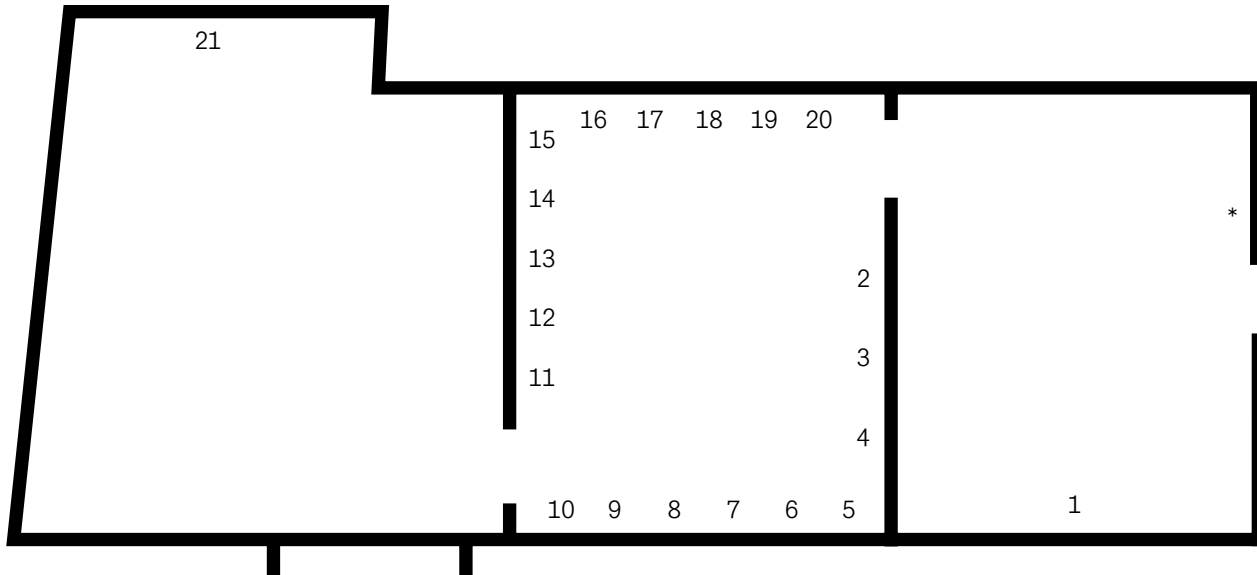


Luke Fowler
 'Index Cards and Letters'
 The Modern Institute
 Osborne Street
 Friday 11th June 2021

Glasgow
 international
 2021



- | | | | | | |
|---|---|---|--|----|--|
| 1 | <i>Mum's Cards</i> , 2018
16mm film with mono optical sound
Duration 9 minutes 3 seconds | 5 | <i>West End Park Grove Terrace</i> , 2021
C-Type colour print
26.5 x 21.7 x 3 cm
10 3/8 x 8 1/2 x 1 1/8 in framed | 9 | <i>What Is Thought</i> , 2021
C-Type colour print
46.2 x 55.8 x 3 cm
18 1/4 x 22 x 1 1/8 in framed |
| 2 | <i>Minor Failures</i> , 2021
C-Type colour print
46.2 x 55.8 x 3 cm
18 1/4 x 22 x 1 1/8 in framed | 6 | <i>The Other End Of The Pram</i> , 2021
C-Type colour print
46.2 x 55.8 x 3 cm
18 1/4 x 22 x 1 1/8 in framed | 10 | <i>These Ministrations</i> , 2021
C-Type colour print
46.2 x 55.8 x 3 cm
18 1/4 x 22 x 1 1/8 in framed |
| 3 | <i>Pseudo-Catagories</i> , 2021
C-Type colour print
46.2 x 55.8 x 3 cm
18 1/4 x 22 x 1 1/8 in framed | 7 | <i>Projected Images</i> , 2021
C-Type colour print
46.2 x 55.8 x 3 cm
18 1/4 x 22 x 1 1/8 in framed | 11 | <i>The Symbolic, Imaginary and Real</i> , 2021
C-Type colour print
55.8 x 46.2 x 3 cm
22 x 18 1/4 x 1 1/8 in framed |
| 4 | <i>Mentalization</i> , 2021
C-Type colour print
46.2 x 55.8 x 3 cm
18 1/4 x 22 x 1 1/8 in framed | 8 | <i>That-has-been</i> , 2021
C-Type colour print
46.2 x 55.8 x 3 cm
18 1/4 x 22 x 1 1/8 in frame | 12 | <i>A Mad Image</i> , 1972
Black and white resin print
26.5 x 21.7 x 3 cm
10 3/8 x 8 1/2 x 1 1/8 in framed |

Luke Fowler
'Index Cards and Letters'
The Modern Institute
Osborne Street
Friday 11th June 2021

Glasgow
international
2021

- | | | |
|---|--|---|
| <p>13 <i>Structures of Feeling</i>, 2021
 C-Type colour print
 46.2 x 55.8 x 3 cm
 18 1/4 x 22 x 1 1/8 in framed</p> | <p>17 <i>Mystical Love Attachment</i>, 2021
 C-Type colour print
 46.2 x 55.8 x 3 cm
 18 1/4 x 22 x 1 1/8 in framed</p> | <p>21 <i>For Dan</i>, 2020
 16mm with mono sound
 Duration: 12 mins</p> |
| <p>14 <i>A Mad Image</i>, 1972
 Black and white resin print
 26.5 x 21.7 x 3 cm
 10 3/8 x 8 1/2 x 1 1/8 in framed</p> | <p>18 <i>Dear Dan</i>, 2021
 C-Type colour print
 46.2 x 55.8 x 3 cm
 18 1/4 x 22 x 1 1/8 in framed</p> | <p>* Norma Starszakowna
 <i>A SIGN</i></p> |
| <p>15 <i>Baby in the Bed</i>, 1971
 Black and white resin print
 26.5 x 21.7 x 3 cm
 10 3/8 x 8 1/2 x 1 1/8 in framed</p> | <p>19 <i>A Peculiar Type of Disjunction</i>,
 2021
 C-Type colour print
 46.2 x 55.8 x 3 cm
 18 1/4 x 22 x 1 1/8 in framed</p> | |
| <p>16 <i>Counter Strategies</i>, 1972
 C-Type colour print
 21.7 x 26.5 x 3 cm
 8 1/2 x 10 3/8 x 1 1/8 in framed</p> | <p>20 <i>In This Light</i>, 2021
 C-Type colour print
 46.2 x 55.8 x 3 cm
 18 1/4 x 22 x 1 1/8 in framed</p> | |