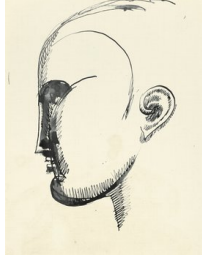





Elie Nadelman

1 August - 10 October 2015

	<p>Elie Nadelman "Ideal Male Head (Ideal Self-Portrait)", ca. 1915 ink on paper 16.5 x 13 cm EN/P 1915/01</p>
	<p>Elie Nadelman "Cello Player", ca. 1918 ink on paper 19.5 x 17 cm EN/P 1918/02</p>
	<p>Elie Nadelman "Drummer", ca. 1919 ink on paper (Savoy Hotel, NY stationery) 23 x 14.5 cm EN/P 1919/01</p>
	<p>Elie Nadelman "Pianist", ca. 1918 ink and ink wash on paper 16.5 x 13.5 cm EN/P 1918/01</p>



Elie Nadelman
"Concert Singer", ca. 1917
ink on paper
14.5 x 15 cm
EN/P 1917/03



Elie Nadelman
"Man and Woman, Standing", ca. 1917
ink on paper
16.5 x 13 cm
EN/P 1917/01



Elie Nadelman
"Standing Man in Tails", ca. 1917
ink on paper
22.5 x 14.5 cm
EN/P 1917/02



Elie Nadelman
"Portrait of a Man", ca. 1915
ink and ink wash on paper
23 x 14.5 cm
EN/P 1915/03



Elie Nadelman
Untitled, ca. 1921
pencil on paper
18.6 x 22 cm
EN/P 1921/23



Elie Nadelman
"Head of a Woman", ca. 1925
ink and ink wash on paper
16.5 x 13 cm
EN/P 1925/04



Elie Nadelman
"Untitled (recto standing Woman in Profile)", 1925
graphite on lined paper, double sided
21.6 x 14 cm
EN/P 1925/03



Elie Nadelman
Untitled, n.d.
ink on paper (Savoy Hotel, NY stationery)
20 x 24.8 cm
EN/P oJ/66



Elie Nadelman
"Standing Girl, Seaside Inn", ca. 1941
ink on paper (Seaside Inn, Daytona Beach, stationery)
24 x 15 cm
EN/P 1941/01



Elie Nadelman
Untitled, n.d.
pencil on paper
17.6 x 10.6 cm
EN/P oJ/55



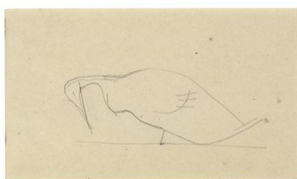
Elie Nadelman
Untitled, n.d.
pencil on paper
17.6 x 10.6 cm
EN/P oJ/56



Elie Nadelman
Untitled, n.d.
pencil on paper
10.6 x 17.8 cm
EN/P oJ/58



Elie Nadelman
Untitled, n.d.
pencil on paper
10.6 x 17.8 cm
EN/P oJ/57



Elie Nadelman
Untitled, n.d.
pencil on paper
10.6 x 17.7 cm
EN/P oJ/53



Elie Nadelman
Untitled, n.d.
pencil on paper
10.1 x 14.2 cm
EN/P oJ/54



Elie Nadelman
"Two Heads", 1910
pencil on paper
25 x 20 cm
EN/P 1910/01

Vitrine 1



Elie Nadelman
"Untitled Plaster (busty standing woman with left leg and foot forward)", ca. 1940
plaster
19 x 10 x 5.5 cm
EN/S 1940/14



Elie Nadelman
"Untitled Plaster (standing woman with short bent left arm, right arm over chest)", ca. 1940
plaster
20.5 x 6.5 x 5 cm
EN/S 1940/12



Elie Nadelman
"Untitled Plaster (standing woman with detailed face, hair, incised bodice)", ca. 1940
plaster
14 x 7 x 5 cm
EN/S 1940/05



Elie Nadelman
"Untitled Plaster (busty standing woman with arm to side, jacket open in middle)", ca. 1940
plaster
19 x 10 x 6.5 cm
EN/S 1940/15



Elie Nadelman
"Untitled Plaster (standing girl with fillet headdress)", ca. 1940
plaster
18 x 7.5 x 6.5 cm
EN/S 1940/09



Elie Nadelman
"Untitled Plaster (seated woman with pointy hat, with extended leg and foot)", ca. 1940
plaster
14 x 6.5 x 6.5 cm
EN/S 1940/07



Elie Nadelman
"Untitled Plaster (seated woman with hat, surls, criss cross belt on criss cross base)", ca. 1940
plaster
13.5 x 7.5 x 5 cm
EN/S 1940/01



Elie Nadelman
"Untitled Plaster (standing woman leaning on honey-comb column)", ca. 1940
plaster
19 x 7.5 x 6.5 cm
EN/S 1940/10

Vitrine 2



Elie Nadelman
"Untitled Plaster (standing woman with crown with head facing right, partial arm pointing left)", ca. 1940
plaster
21.5 x 10 x 7.5 cm
EN/S 1940/03



Elie Nadelman
"Untitled Plaster (standing woman with left leg leading, truncated left arm)", ca. 1940
plaster
14 x 6 x 5 cm
EN/S 1940/04



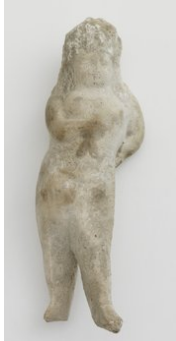
Elie Nadelman
"Untitled Plaster (brown coloration, standing girl with curled hair, bodice, bent right arm over chest)", ca. 1940
plaster
19 x 7.5 x 5 cm
EN/S 1940/13



Elie Nadelman
"Untitled Plaster (standing woman with pointed hat and curls)",
ca. 1940
plaster
26.5 x 11.5 x 7.5 cm
EN/S 1940/16



Elie Nadelman
"Untitled Plaster (standing woman facing toward her left with
legs apart)", ca. 1940
plaster
25.4 x 7.5 x 7.5 cm
EN/S 1940/11



Elie Nadelman
"Untitled Plaster (standing woman with right arm and bow at
chest)", ca. 1940
plaster
15 x 5 x 4 cm
EN/S 1940/20



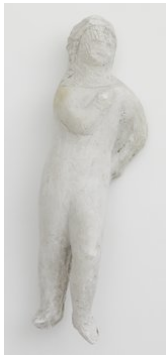
Elie Nadelman
"Untitled Plaster (standing woman with round featureless face,
small hole in stomach)", ca. 1940
plaster
16 x 6.5 x 5 cm
EN/S 1940/18



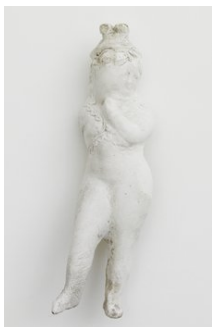
Elie Nadelman
"Untitled Plaster (standing woman with right foot raised)", ca. 1940
plaster
14 x 4 x 3 cm
EN/S 1940/19







Elie Nadelman
"Untitled Plaster (frontal figure with carving)", ca. 1940
plaster
14 x 6.5 x 6.5 cm
EN/S 1940/06



Elie Nadelman
"Untitled Plaster (standing woman less detail on face, pencil line on bodice)", ca. 1940
plaster
25.4 x 7.5 x 7.5 cm
EN/S 1940/08



Elie Nadelman
"Untitled Plaster (standing woman with criss cross bodice, head turned, left hand to chin)", ca. 1940
plaster
18 x 5 x 5 cm
EN/S 1940/02

Vitrine 3	
	<p>Elie Nadelman “Untitled Plaster (Two figures)”, ca. 1940 plaster 19 x 15 x 6.5 cm EN/S 1940/21</p>
Vitrine 4	
	<p>Elie Nadelman “Spinario-Seated Woman”, ca. 1930–1935 papermache 18 x 15 x 15 cm EN/S 1930/02</p>
	<p>Elie Nadelman “Spinario-Seated Woman”, ca. 1935 papier-mâché, painted 17.8 x 16.58 x 14 cm EN/S 1935/02</p>
Vitrine 5	
	<p>Elie Nadelman “Seated Woman with poodle at side”, ca. 1935 papier-mâché, painted 16 x 13 x 7.5 cm EN/S 1935/07</p>



Elie Nadelman
"Seated Woman with poodle at side", ca. 1935
papermache
16 x 13 x 7.5 cm
EN/S 1935/08



Elie Nadelman
"Seated Woman with poodle on lap", ca. 1935
papier-mâché, painted
20 x 14 x 10 cm
EN/S 1935/06

Vitrine 6



Elie Nadelman
"Seated Woman, poodle behind", ca. 1935
papermache
39.5 x 25 x 10 cm
EN/S 1935/05

Window antiquarian bookstore



Elie Nadelman
"Untitled Plaster (busty, baby-like standing woman with drilled hole defining her right arm)", ca. 1940
plaster
21.5 x 9.5 x 6.5 cm
EN/S 1940/17

Office Neven-DuMont-Straße



Elie Nadelman
"Sketches of Seahorses and Nude", ca. 1930
ink on paper (Marlborough-Blenheim Hotel, Atlantic City, stationery)
13.5 x 28 cm
EN/P 1930/01