

Atsuko Tanaka

“Works from the late 1960s to 2000”

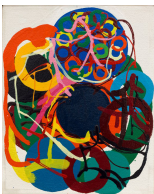
8 June - 1 September 2018

I.



“Work (title unknown)”, n.d. (latter half of 1960's)
gouache on thick paper
19.4 x 12.8 cm (framed: 36.8 x 29.6 x 3 cm)
AT/P nd/01

II.



“Work (title unknown)”, 1973
vinyl paint on canvas
27.6 x 22.3 cm (framed: 29.9 x 24.2 x 3.5 cm)
AT/M 1973/01



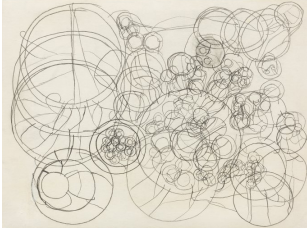
“Work”, 1973
acrylic lacquer on canvas
40 x 31.5 cm (framed: 57.7 x 48.2 x 4.1 cm)
AT/M 1973/02



“Work (title unknown)”, 1972
vinyl paint on canvas
45.7 x 38 cm (framed: 47.8 x 39.9 x 3.1 cm)
AT/M 1972/01



“83c”, 1983
synthetic resin enamel paint on canvas
45.5 x 37.8 cm (framed: 47.5 x 39.8 x 3.1 cm)
AT/M 1983/02



“Work (title unknown)”, ca. 1983
pencil on paper
25.4 x 33.8 cm (framed: 30 x 38.5 x 3.7 cm)
AT/P 1983/01

III.



“2000C”, 2000
acrylic lacquer on canvas
100.5 x 72 cm (framed: 102.5 x 73.9 x 3.2 cm)
AT/M 2000/01



“1980b”, 1980
gouache on paper
55.5 x 38.5 cm (framed: 68.8 x 52.1 x 3.1 cm)
AT/P 1980/01

IV.



“99b”, 1999

acrylic lacquer on canvas

22.7 x 15.8 cm (framed: 24.8 x 17.7 x 3.4 cm)

AT/M 1999/02



“99c”, 1999

acrylic lacquer on canvas

22.7 x 15.8 cm (framed: 24.8 x 17.7 x 3.6 cm)

AT/M 1999/01

Office



“Work (title unknown)”, 2000

conté and oil pastel on paper

29.5 x 21 cm (framed: 31 x 22.4 x 3.1 cm)

AT/P 2000/02