

Galerie Buchholz

17 East 82nd Street
New York, NY 10028
Tel +1(212) 328 7885
Fax +1(212) 328 7886
post@galeriebuchholz.com
www.galeriebuchholz.com

Vista View




Tomma Abts, Ginny Bishton, Whitney Claflin, Carlfriedrich Claus, Ralston Crawford, Norman Lewis, Agnes Martin, Mohammad Nasrallah, Daniela Ortiz, Luis Inca Ramos, Kay Sage, Max Hooper Schneider, Ben Shahn, Hedda Sterne, Gili Tal, Stewart Uoo, Alice Valenti, Ulla Wiggen

an exhibition curated by Caleb Considine

31 January – 20 April 2019

Opening Wednesday, 30 January, 6-8 pm

Gallery 1	
	Ralston Crawford Untitled, 1950 oil on canvas 50.8 x 63.5 cm 20 x 25 inches RC/M 1950/01
	Daniela Ortiz “1st of May Camp”, 2012 c-print 40.6 x 70 cm 16 x 26 inches DO/F 2012/02
	Daniela Ortiz “1st of May Camp”, 2012 c-print 40.6 x 70 cm 16 x 26 inches DO/F 2012/01

	<p>Daniela Ortiz “1st of May Camp”, 2012 documentation with description (print-out)</p> <p>Daniela Ortiz “97 House Maids” Generalitat de Catalunya & Secretaria de Joventut, Barcelona, 2010 (artist book)</p>
	<p>Carlfriedrich Claus “Handreflexion”, 1974 lithography on tracing paper, doublesided 48.5 x 36.9 cm 19 x 14 1/2 inches CFC/E 1974/01</p>
	<p>Norman Lewis Untitled, 1964 oil on paper 86.4 x 57.2 cm 34 x 22 1/2 inches NL/M 1964/01</p>
	<p>Hedda Sterne Untitled, c. 1950 oil and spray enamel on canvas 106.7 x 86.4 cm 42 x 34 inches HST/M 1950/01</p>



Agnes Martin
Untitled, 1963
ink on paper
20.5 x 19.7 cm | 8 x 7 3/4 inches
AM/P 1963/01





Ben Shahn
"Public Sale", 1956
ink on paper
25.4 x 30.5 cm | 10 x 12 inches
BS/P 1956/01





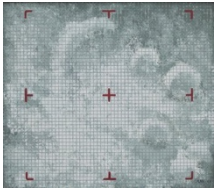
Ben Shahn
"Bountiful Harvest", 1944
tempera on board
96.5 x 71.1 cm | 38 x 28 inches
BS/M 1944/01



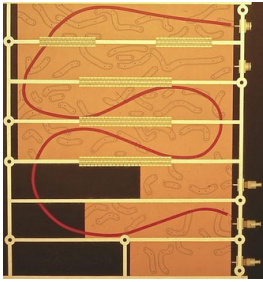
Agnes Martin
Untitled, 1977
watercolor and graphite on paper
22.9 x 22.9 cm | 9 x 9 inches
AM/P 1977/02

	<p>Gili Tal “London is Open”, 2018 Lazertran and varnish on canvas 170 x 120 cm 67 x 47 1/4 inches GT/M 2018/02</p>
	<p>Gili Tal “The Spectacular Instant”, 2018 Lazertran and varnish on canvas 170 x 120 cm 67 x 47 1/4 inches GT/M 2018/01</p>

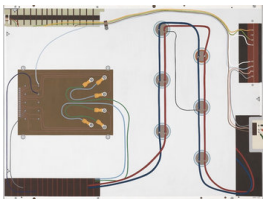
<p>Gallery 2</p>	
	<p>Luis Inca Ramos “Mystery Tunnel”, 2015 acrylic and mixed media on canvas 61 x 76.2 cm 24 x 30 inches LIR/M 2015/01</p>
	<p>Mohammad Nasrallah Untitled, 2013 oil on paper 50 x 70 cm 19 3/4 x 27 1/2 inches MN/P 2013/01</p>



Ulla Wiggen
“Planet”, 1968
acrylic on wood panel
28 x 32 cm | 11 x 12 5/8 inches
UW/M 1968/03



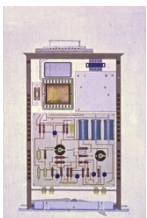
Ulla Wiggen
“Pulsgivare”, 1967
acrylic on wood panel
80 x 75 cm | 31 1/2 x 29 1/2 inches
UW/M 1967/03



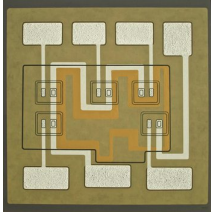
Ulla Wiggen
“Kanalväljare”, 1967
acrylic on wood panel
60 x 80 cm | 23 5/8 x 31 1/2 inches
UW/M 1967/01



Ulla Wiggen
“Oändligt variabel”, 1968
acrylic on wood panel
53 x 60 cm | 20 7/8 x 23 5/8 inches
UW/M 1968/02



Ulla Wiggen
“Förstärkare”, 1964
gouache on wood panel and gauze
35 x 25 cm | 13 3/4 x 9 7/8 inches
UW/M 1964/01



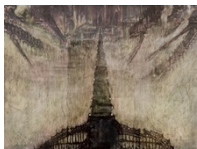
Ulla Wiggen
“Mostånd 1967”, 1967
acrylic on wood panel
70 x 70 cm | 27 1/2 x 27 1/2 inches
UW/M 1967/02



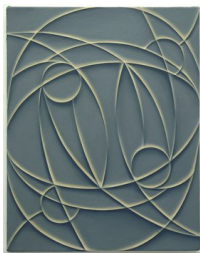
Kay Sage
“Third Paragraph”, 1953
oil on canvas
98.7 x 81 cm | 39 x 32 inches
KSA/M 1953/01








Stewart Uoo
“Vampire Transfusion (after Yoshiaki Kawajiri)”, 2019
sumi ink, watercolor on polypropylene paper
30.5 x 45.7 cm | 12 x 18 inches
SU/P 2019/02



Stewart Uoo
“Runway to the Vampire Castle Spacecraft (after Yoshiaki Kawajiri)”, 2019
sumi ink, watercolor on polypropylene paper
22.9 x 30.5 cm | 9 x 12 inches
SU/P 2019/01



Tomma Abts
“Ehme”, 2002
acrylic and oil on canvas
48 x 38 cm | 18 7/8 x 15 inches
TA/M 2002/01

	<p>Alice Valenti “Warm Night Trees #2”, 2018 oil on panel 25.4 x 20.3 cm 10 x 8 inches AV/M 2018/02</p>
	<p>Alice Valenti “Warm Night Trees #1”, 2018 oil on panel 25.4 x 20.3 cm 10 x 8 inches AV/M 2018/01</p>
	<p>Alice Valenti “Rock”, 2017 oil on panel 10.2 x 15.2 cm 4 x 6 inches AV/M 2017/01</p>
	<p>Alice Valenti “Rocks on the Windowsill”, 2017 oil on panel 12.7 x 17.8 cm 5 x 7 inches AV/M 2017/02</p>
	<p>Carlfriedrich Claus “Kombinat Nuklearblatt 4”, 1990 serigraph image: 26.2 x 40.7 cm 10 3/8 x 16 inches paper: 29.7 x 42 cm 11 3/4 x 16 1/2 inches CFC/E 1990/02</p>



Carlfriedrich Claus
“Eulenspiegel-Reflex”, 1974
offset lithography on tracing paper
71.8 x 50.6 cm | 28 1/4 x 20 inches
Edition 1/20
CFC/E 1974/02



Max Hooper Schneider
“Template Morphogenesis”, 2012
marker and ink on paper, acrylic, hardware
paper: 22.9 x 30.5 cm | 9 x 12 inches
acrylic: 27.9 x 35.6 x 2.5 cm | 11 x 14 x 1 inches
MH/P 2012/01



Max Hooper Schneider
“Enchanter's Station”, 2012
marker and ink on paper, acrylic, hardware
paper: 22.9 x 30.5 cm | 9 x 12 inches
acrylic: 27.9 x 35.6 x 2.5 cm | 11 x 14 x 1 inches
MH/P 2012/02

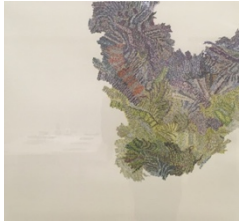
Gallery 3



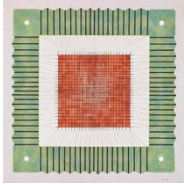
Whitney Claflin
“Sender”, 2019
oil on linen
35.6 x 40.6 cm | 14 x 16 inches
WC/M 2019/01



Ginny Bishton
"Meadow", 2007
photo collage on paper
71.1 x 105.4 cm | 28 x 41 1/2 inches
GBS/P 2007/01



Ginny Bishton
"Walking 12", 2001
photo collage on paper
76.2 x 81.3 cm | 30 x 32 inches
GBS/P 2001/01



Ulla Wiggen
"Magnetiskt Minne", 1968
acrylic on wood panel
52 x 52 cm | 20 1/2 x 20 1/2 inches
UW/M 1968/01