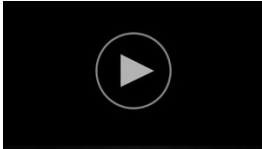




## 'ALIEN NATION'

Curated by Kenta Murakami

20 June - 01 August 2021



### **Julia Scher**

*Welcome Aliens*, 2012

Sound installation

Duration 1:15 min

JS003



### **Soil Thornton**

*Untitled Political Aliens (Top Fifty U.S. Babies 2018 Gender Mashed To Make My New)*, 2018  
acrylic paint, sharpie and graphite on cardboard  
128 x 96½ in.

325.1 x 245.1 cm

ST001



### **Puppies Puppies**

*Eve's/Adam's Apple (Adam's Apple is a lump of cartilage that sticks out from the throat) (symbol of banishment) (clocked by my large Eve's/Adam's Apple) (Eve's Apple) (Bitten)*, 2020

apple

dimensions variable

PP003



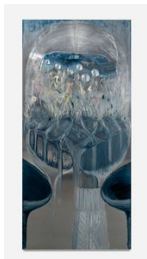
### **Kayode Ojo**

*Duel*, 2020

jackets, music stands, mirror, replica handcuffs, replica guns

dimensions variable

KO001



### **WangShui**

*Mindful Witness*, 2021

oil on aluminum honeycomb panel

90 x 43 in

228.6 x 109.2 cm

W001



### **Puppies Puppies**

*Eve's/Adam's Apple (Adam's Apple is a lump of cartilage that sticks out from the throat) (clocked by my large Eve's/ Adam's Apple) (Eve's Apple) (not bitten - pre banishment), 2020*  
apple  
dimensions variable  
PP008



### **Peter Nagy**

*Quadrillion, 1987*  
acrylic on canvas  
36 x 36 x 2 in  
91 x 91 x 5 cm  
PN001



### **Tishan Hsu**

*Study - Embryo 1, 1982*  
color pencil on paper  
11 x 14 in.  
27.9 x 35.6 cm  
THS002



### **Gretchen Bender**

*Creatures, 1985-88*  
mixed media polished steel with film and  
fluorescent bulb  
20 x 23 x in.  
51 x 76 cm  
GB002



### **Kayode Ojo**

*Do you want to go back to my place?, 2021*  
Polaroid SX-70 Camera, drill bits, glass, bullets  
installation dimensions variable  
KO003

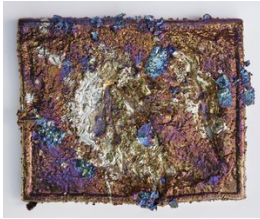


### **Colette**

*Colettesized Lamp (Living Environment  
Fragment, 1972-83, destroyed by Hurricane  
Sandy, 2012), 1973-*  
lamp, fabric, photo  
23 x 14 x 14 inches  
58 x 36 x 36 cm  
C001



**Catharine Czudej**  
*Scratch 2*, 2021  
metal and ceramic  
26 x 22 x 4. in.  
66 x 55.9 x 10.2 cm  
CC008



**Catharine Czudej**  
*Scratch 8*, 2021  
metal and ceramic  
26 x 22 x 4 in.  
66 x 55.9 x 10.2 cm  
CC015



**Gretchen Bender**  
*TV Text Image (DREAM NATION)*, 1989  
Exhibited as: live television broadcast on a monitor, vinyl lettering.  
13¾ x 14 x 17 in.  
34.9 x 35.6 x 43.2 cm  
GB003



**Helmut Lang**  
wood, tar  
83.5 x 34 x 30 in.  
212 x 86 x 76 cm  
2021  
HL009



**Helmut Lang**  
wood, tar  
71.5 x 36 x 21 in.  
182 x 91 x 53 cm  
2021  
HL008



**Gretchen Bender**  
*Ghost Busters*, 1984  
photographs on Masonite  
63⅝ x 56¼ in.  
161.6 x 142.9 cm  
GB001



**Tishan Hsu**

*New Portable*, 1988

Acrylic, compound, alkyd, aluminum, and oil on wood

15.5 x 84 x 7 in.

39.4 x 213.4 x 17.8 cm

THS001



**Pope.L**

*Well (Redistribution Version)*, 2019

Drinking glasses and water, 9 parts  
dimensions variable

P001