

Tanya Leighton

Sean Edwards, 'distant borrowing'
19 June – 24 July 2021



Sean Edwards
Monstrance (i), 2021
UV curable ink printed direct to
greyboard, gouache, graphite
and glue
14x14x2.5 cm
5½x5½x1 in
Unique
(EDWARDS-2021-0061)



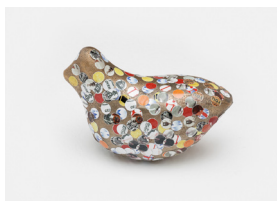
Sean Edwards
Monstrance (ii), 2021
UV curable ink printed direct to
greyboard, gouache, graphite
and glue
14x14x2.5 cm
5½x5½x1 in
Unique
(EDWARDS-2021-0062)



Sean Edwards
Monstrance (iii), 2021
UV curable ink printed direct to
greyboard, gouache, graphite
and glue
14x14x2.5 cm
5½x5½x1 in
Unique
(EDWARDS-2021-0063)



Sean Edwards
Monstrance (iv), 2021
UV curable ink printed direct to
greyboard, gouache, graphite
and glue
14x14x2.5 cm
5½x5½x1 in
Unique
(EDWARDS-2021-0064)



Sean Edwards
the space between,, 2011-21
Bronze and adhesive archival inkjet
print
6.5x9x4 cm
2x4x2 in
Unique
(EDWARDS-2021-0072)



Sean Edwards
trailing past, 2021
UV curable ink printed direct to
greyboard, gouache, graphite
and glue
40 parts: each 21x3.6 cm
8¼x1½ in
Unique
(EDWARDS-2021-0066)



Sean Edwards
Not Expecting Much, 2021
Watercolour on paper, framed
54x71.8 cm
21¼x28¼ in
Unique
(EDWARDS-2021-0067)



Sean Edwards
Putting right i, 2021
Watercolour on paper and oak
23.5x31.5 cm
7x10¼ in
Unique
(EDWARDS-2021-0068)



Sean Edwards
Putting right ii, 2021
Watercolour on paper and oak
23.5x31 cm
7x10¼ in
Unique
(EDWARDS-2021-0069)

Kurfürstenstraße 156, 10785 Berlin

+49 (0)30 21 972 220, info@tanyaleighton.com, www.tanyaleighton.com