

**Le coeur encore**  
**Stefania Batoeva, Pam Evelyn, Francesca Mollett**

1



**Pam Evelyn**  
*Civil Dawn, 2021*  
Oil on linen  
200 x 500 cm (78 5/8 x 196 3/4 in.)  
Diptych: each panel 200x250cm

2



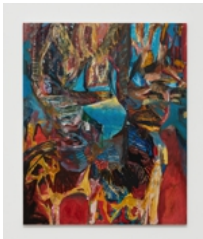
**Stefania Batoeva**  
*Split figure (glass city), 2021*  
Oil on canvas  
170 x 200 cm (66 7/8 x 78 5/8 in.)

3



**Stefania Batoeva**  
*Figure (glass city), 2021*  
Oil on canvas  
200 x 170 cm (78 5/8 x 66 7/8 in.)

4



**Francesca Mollett**  
*Knocker, 2021*  
Oil and acrylic on calico  
160 x 130 cm (63 x 51 1/8 in.)

5



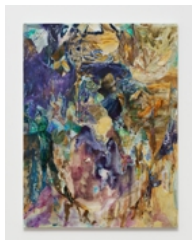
**Francesca Mollett**  
*Of the spangled mind, 2021*  
Oil and acrylic on calico  
180 x 140 cm (70 3/4 x 55 in.)

6



**Francesca Mollett**  
*Eddy, 2021*  
Oil and acrylic on calico  
170 x 130 cm (66 7/8 x 51 1/8 in.)

7



**Francesca Mollett**  
*Lathe*, 2021  
Oil and acrylic on calico  
140 x 105 cm (55 x 41 1/4 in.)

8



**Pam Evelyn**  
*Crowd*, 2021  
Oil on linen  
160 x 150 cm (63 x 59 in.)

9



**Pam Evelyn**  
*Keeping a weather eye open*, 2021 Oil  
on linen  
150 x 140 cm (59 x 55 in.)

Credit: Michal Brzezinski

Courtesy:

Pam Evelyn, *Civil Dawn*, 2021 © The Artist. Courtesy The Artist and The Approach, London.

Stefania Batoeva, *Split figure (glass city)*, 2021 © The Artist. Courtesy The Artist and The Approach, London.

Stefania Batoeva, *Figure (glass city)*, 2021 © The Artist. Courtesy The Artist and The Approach, London.

Francesca Mollett, *Knocker*, 2021 © The Artist. Courtesy The Artist and The Approach, London.

Francesca Mollett, *Of the spangled mind*, 2021 © The Artist. Courtesy The Artist and The Approach, London.

Francesca Mollett, *Eddy*, 2021 © The Artist. Courtesy The Artist and The Approach, London.

Francesca Mollett, *Lathe*, 2021 © The Artist. Courtesy The Artist and The Approach, London.

Pam Evelyn, *Crowd*, 2021 © The Artist. Courtesy The Artist and The Approach, London.

Pam Evelyn, *Keeping a weather eye open*, 2021 © The Artist. Courtesy The Artist and The Approach, London.