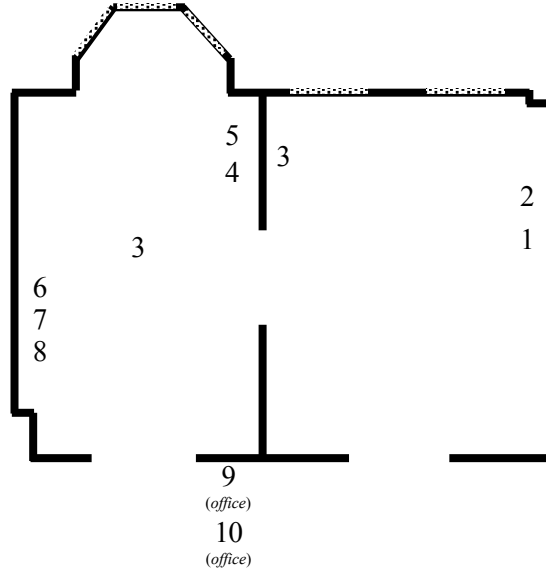


Sweetwater, Berlin

Constantin Thun

Cabin, [5.2.2020 – 29.2.2020]

February 5 – February 29



1. *Untitled toolbox (Adalbert)*, 2019
cardboard box, assorted tools
30 x 15.5 x 22.5 centimeters
11.8 x 6.1 x 8.9 inches
2. *no title*, no date
cardboard box, assorted materials
45 x 34.5 x 8 centimeters
17.7 x 13.6 x 3.1 inches
3. *Cabin.*, 2020 – ongoing
oak
dimensions variable
4. *Untitled tool (C)*, 2019
wooden tool
56 x 2 centimeters
22 x 0.8 inches
5. *Untitled tool (F)*, 2019
wooden tool
69.7 x 6.8 centimeters
27.4 x 2.7 inches
6. *Untitled tool (L)*, 2018
wooden tool
67.4 x 2.8 centimeters
26.5 x 1.1 inches
7. *Untitled tool (G)*, 2019
wooden tool
42 x 2.6 centimeters
16.5 x 1 inches
8. *Untitled painting (Vulcano, 1990)*, 2016 – 2018
found painting (chalk on acrylic on canvas), artist's frame
52 x 62 centimeters
20.5 x 24.5 inches
9. *Untitled key (Sweetwater, Berlin)*, 2020
keys, keyring, nail
9 x 3 x 3 centimeters
3.5 x 1.25 x 1.25 inches
10. *Equivalents.*, 2020
vitrine, assorted materials
104 x 158 x 58 centimeters
41 x 62 x 23 inches

Constantin Thun lives and works in Berlin. Recent solo exhibitions include Youth Club, London (2018) and Galleria Fonti, Naples (2017). His work has been included in group shows at Mavra, Paros; Point Centre for Contemporary Art, Nicosia; Der TANK, Basel; Astrup Fearnley Museum, Oslo; and Elaine, Museum für Gegenwartskunst, Basel.