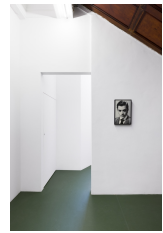


- 1 Installation view, Megan Plunkett, *Electric Avenue*, Emalin, London, 30 July - 11 September 2021

© Megan Plunkett
Courtesy of the artist and Emalin, London
Photography: Stephen James



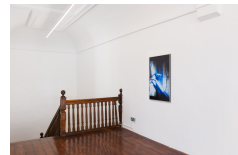
- 2 Megan Plunkett
Joe D. Badguy 02, 2021
digital print on Canson Platine Rag, gatorboard, glass, acrylic, black electric tape
47 x 31.5 x 5 cm (18 1/2 x 12 3/8 x 2 inches) (framed)
Unique
(Alternative view)

© Megan Plunkett
Courtesy of the artist and Emalin, London
Photography: Stephen James



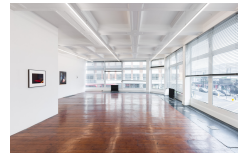
- 3 Installation view, Megan Plunkett, *Electric Avenue*, Emalin, London, 30 July - 11 September 2021

© Megan Plunkett
Courtesy of the artist and Emalin, London
Photography: Stephen James



- 4 Installation view, Megan Plunkett, *Electric Avenue*, Emalin, London, 30 July - 11 September 2021

© Megan Plunkett
Courtesy of the artist and Emalin, London
Photography: Stephen James



- 5 Megan Plunkett
The Invader 01, 2021
digital C-type print on glossy paper in aluminium artist frame
30.5 x 45.7 cm (12 x 18 inches)
51.5 x 66.5 x 3.5 cm (20 1/4 x 26 1/8 x 1 3/8 inches) (framed)
Edition of 2 plus 1 AP

© Megan Plunkett
Courtesy of the artist and Emalin, London
Photography: Stephen James



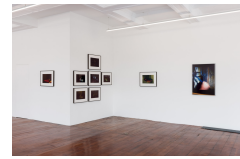
- 6 Installation view, Megan Plunkett, *Electric Avenue*, Emalin, London, 30 July - 11 September 2021

© Megan Plunkett
Courtesy of the artist and Emalin, London
Photography: Stephen James



- 7 Installation view, Megan Plunkett, *Electric Avenue*, Emalin, London, 30 July - 11 September 2021

© Megan Plunkett
 Courtesy of the artist and Emalin, London
 Photography: Stephen James



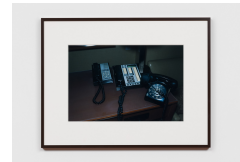
- 8 Installation view, Megan Plunkett, *Electric Avenue*, Emalin, London, 30 July - 11 September 2021

© Megan Plunkett
 Courtesy of the artist and Emalin, London
 Photography: Stephen James



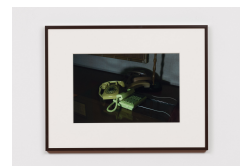
- 9 Megan Plunkett
The Intruder 02, 2021
 digital C-type print on glossy paper in aluminium artist frame
 30.5 x 45.7 cm (12 x 18 inches)
 51.1 x 66.6 x 3.2 cm (20 1/8 x 26 1/4 x 1 1/4 inches) (framed)
 Edition of 2 plus 1 AP

© Megan Plunkett
 Courtesy of the artist and Emalin, London
 Photography: Stephen James



- 10 Megan Plunkett
The Invader 03, 2021
 digital C-type print on glossy paper in aluminium artist frame
 26.7 x 40.6 cm (10 1/2 x 16 inches)
 47.5 x 61.5 x 3.5 cm (18 3/4 x 24 1/4 x 1 3/8 inches) (framed)
 Edition of 2 plus 1 AP

© Megan Plunkett
 Courtesy of the artist and Emalin, London
 Photography: Stephen James



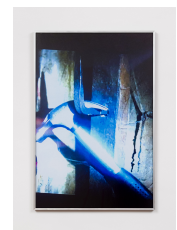
- 11 Installation view, Megan Plunkett, *Electric Avenue*, Emalin, London, 30 July - 11 September 2021

© Megan Plunkett
 Courtesy of the artist and Emalin, London
 Photography: Stephen James



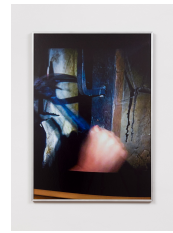
- 12 Megan Plunkett
The Hammer (Right), 2020-21
 digital print on glossy paper in artist frame
 101 x 68 cm (39 3/4 x 26 3/4 inches)
 101.5 x 69 x 3 cm (40 x 27 x 1 1/8 inches) (framed)
 Edition of 2 plus 1 AP

© Megan Plunkett
 Courtesy of the artist and Emalin, London
 Photography: Stephen James



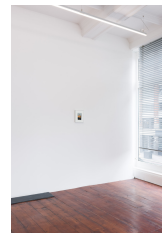
- 13 Megan Plunkett
The Hammer (Left), 2020-21
digital print on glossy paper in artist's frame
96.5 x 68.6 cm (38 x 27 inches)
97 x 69 x 3 cm (38 1/4 x 27 1/8 x 1 1/8 inches) (framed)
Edition of 2 plus 1 AP

© Megan Plunkett
Courtesy of the artist and Emalin, London
Photography: Stephen James



- 14 Installation view, Megan Plunkett, *Electric Avenue*, Emalin, London, 30 July - 11 September 2021

© Megan Plunkett
Courtesy of the artist and Emalin, London
Photography: Stephen James



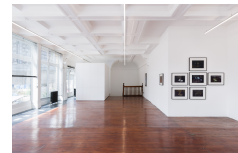
- 15 Megan Plunkett
The Hammer 05, 2021
digital print on glossy paper under 2 ply white mat in aluminium artist frame
15.2 x 7.6 cm (6 x 3 inches)
25.4 x 20.3 cm (10 x 8 inches) (framed)
Edition of 1 plus 1 AP

© Megan Plunkett
Courtesy of the artist and Emalin, London
Photography: Stephen James



- 16 Installation view, Megan Plunkett, *Electric Avenue*, Emalin, London, 30 July - 11 September 2021

© Megan Plunkett
Courtesy of the artist and Emalin, London
Photography: Stephen James



- 17 Installation view, Megan Plunkett, *Electric Avenue*, Emalin, London, 30 July - 11 September 2021

© Megan Plunkett
Courtesy of the artist and Emalin, London
Photography: Stephen James

