

RON NAGLE MIDNIGHT STROLL

19.09.19 – 10.01.20



The Perimeter
20 Brownlow Mews, London WC1N 2LE
info@theperimeter.co.uk

The Perimeter is proud to present *Midnight Stroll*, a solo exhibition by American sculptor Ron Nagle.

Ron Nagle creates intimate, sometimes whimsical sculptures that defy the traditional boundaries between craft-centred ceramics and fine art sculpture. His tactile pieces are made from a variety of materials such as epoxy resin, catalyzed polyurethane, bronze, and high-gloss automotive paint mixed to his specifications and applied with an airbrush. It is this contrast of materials combined with his tongue-in-cheek humour and exceptional use of colour that animates his small-scale works.

With inspiration drawn from paintings, drawings and mid 20th century West Coast American culture, these miniature moments provide mysterious windows into Nagle's vivacious world.

Midnight Stroll is The Perimeter's first solo exhibition. It features works from the private collections of Alexander V. Petalas and Ron Nagle, and includes 24 sculptures and 10 drawings, some of which have never been seen before. The sculptures are displayed in specially made niches and plate-glass vitrines designed in close collaboration with the artist. The works in the exhibition span the last three decades of Nagle's career.







Ron Nagle (b. 1939) lives and works in San Francisco. He began working with ceramics in the 1950s which led him to becoming apprentice to Peter Voulkos, generally considered the godfather of the West Coast ceramics scene. Nagle later exhibited his work alongside Voulkos, Ken Price, and other innovative West Coast artists working in clay. His first solo exhibition was in 1968 and since then, he has exhibited frequently in galleries and museums across the globe. Outside of the visual art world, Nagle is also known as a prolific songwriter and composer.





UNTITLED (DARK GREEN)
1982-83
CERAMIC AND GLAZE
10 x 7 x 6 CM



BRONZE 1
1991
BRONZE
9 x 8 x 6 CM



SENOR PICO
1991
BRONZE
6 x 12 x 6 CM



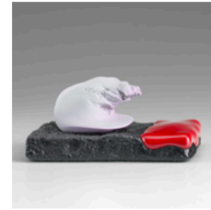
UNTITLED (DARK GREEN)
1982-83
CERAMIC AND GLAZE
10 x 7 x 6 CM



BRONZE 1
1991
BRONZE
9 x 8 x 6 CM



SENOR PICO
1991
BRONZE
6 x 12 x 6 CM



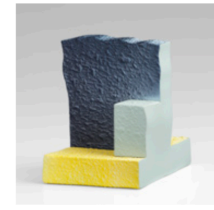
DONKEY NO SHOW
2016
CERAMIC, GLAZE AND CATALYZED
POLYURETHANE AND EPOXY RESIN
7 x 14 x 9 CM



ICE BREAKER
2016
CERAMIC, GLAZE, BRONZE, CATALYZED
POLYURETHANE AND EPOXY RESIN
15 x 6 x 15 CM



MS. ARTISMAL
2018
CERAMIC, CATALYZED POLYURETHANE,
EPOXY RESIN AND ACRYLIC
17 x 10 x 10 CM



EARLY BIRD SPECIAL
2018
CERAMIC, CATALYZED POLYURETHANE
AND EPOXY RESIN
11 x 9 x 11 CM



UNTITLED
2016
INK, 18KT GOLD LEAFING PEN, ACRYLIC, COLOURED
PENCIL AND GRAPHITE ON CRAFT PAPER
28 x 22 CM



NOSE DRIP CUP
1989
CERAMIC
10 x 15 x 8 CM



BRONZE 8
1991
BRONZE
12 x 12 x 8 CM



RITZU
1997
EARTHENWARE AND UNDERGLAZE
14 x 14 x 13 CM



NOSE DRIP CUP
1989
CERAMIC
10 x 15 x 8 CM



BRONZE 8
1991
BRONZE
12 x 12 x 8 CM



RITZU
1997
EARTHENWARE AND UNDERGLAZE
14 x 14 x 13 CM



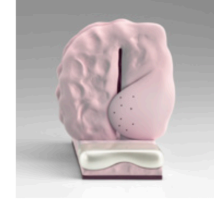
URGENT UNGUENT
2016
CERAMIC, GLAZE, CATALYZED
POLYURETHANE, EPOXY RESIN
AND ACRYLIC
13 x 8.9 x 11 CM



GHOSTING
2016
CERAMIC, CATALYZED POLYURETHANE,
EPOXY RESIN AND ACRYLIC
14 x 10 x 11 CM



PAUNCHY PILOT
2018
WOOD, CATALYZED POLYURETHANE
AND EPOXY RESIN
13 x 15 x 11 CM



THIRD VENUE
2018
WOOD, CATALYZED POLYURETHANE
AND EPOXY RESIN
12 x 7 x 13 CM



UNTITLED
2018
INK, 18KT GOLD LEAFING PEN, ACRYLIC
AND GRAPHITE ON CRAFT PAPER
31 x 23 CM



FRANKLY SPEAKING
1997
EARTHENWARE AND OVERGLAZE
13 x 12 x 11 CM



MIDNIGHT STROLL
1997
EARTHENWARE, GLAZE AND
UNDERGLAZE
13 x 13 x 13 CM



TEETER TARTAR
2000
MIXED MEDIA
15 x 8 x 6 CM



POULTRY IN MOTION
2011
CERAMIC, GLAZE, CATALYZED
POLYURETHANE AND EPOXY RESIN
20 x 10 x 16 CM



THE GOLD SHOULDER
2013
CERAMIC, GLAZE, CATALYZED
POLYURETHANE AND EPOXY RESIN
8 x 19 x 10 CM



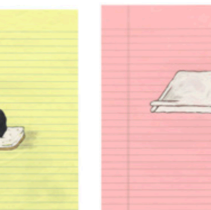
INFUSION SEZ
2014
CERAMIC, CATALYZED POLYURETHANE
AND EPOXY RESIN
17 x 23 x 6 CM



UNTITLED
1997
GRAPHITE ON VELLUM
31 x 23 CM



UNTITLED
1997
GRAPHITE ON VELLUM
31 x 23 CM



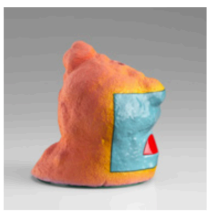
UNTITLED
2012
INK, 18KT GOLD LEAFING PEN,
ACRYLIC AND GRAPHITE ON PAPER
27 x 22 CM



UNTITLED
2013
18KT GOLD LEAFING PEN, ACRYLIC,
AND GRAPHITE ON PAPER
28 x 22 CM



UNTITLED
2015
INK, 18KT GOLD LEAFING PEN,
CORRECTION FLUID AND GRAPHITE ON PAPER
28 x 22 CM



G.P.S.
1997
EARTHENWARE, GLAZE, OVERGLAZE,
CHINA PAINT AND EPOXY RESIN
13 x 11 x 11 CM



ROADRUNNER
1997
EARTHENWARE, UNDERGLAZE, GLAZE,
CHINA PAINT AND EPOXY RESIN
13 x 13 x 13 CM



SCHUB
2005
GLAZED EARTHENWARE
9.5 x 12 x 12 CM



SCHMEEAR CAMPAIGN
2012
CERAMIC, GLAZE, EPOXY RESIN
AND CHINA PAINT
17.7 x 7.6 x 9.5 CM



STINKEYE STARE DOWN
2014
CERAMIC, PORCELAIN, GLAZE,
CATALYZED POLYURETHANE AND
EPOXY RESIN



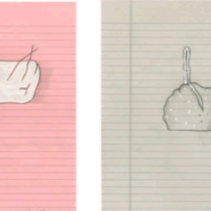
MUTHA FAKIR
2015
CERAMIC, GLAZE, CATALYZED
POLYURETHANE AND EPOXY RESIN
10 x 10 x 7 CM



UNTITLED
1997
GRAPHITE ON VELLUM
31 x 23 CM



UNTITLED
1997
GRAPHITE ON VELLUM
31 x 23 CM



UNTITLED
2013
ACRYLIC AND GRAPHITE ON PAPER
28 x 22 CM



UNTITLED
2013
ACRYLIC AND GRAPHITE ON PAPER
27 x 22 CM



UNTITLED
2015
INK, 18KT GOLD LEAFING PEN, CORRECTION
FLUID AND GRAPHITE ON PAPER
31 x 23 CM