

ALMINE RECH

# Portraits / Abstraites Group Show

September 9 – October 9, 2021

18 Avenue Matignon  
75008 Paris FR  
T +33 1 43 87 30 66  
[contact.paris@alminerech.com](mailto:contact.paris@alminerech.com)  
[www.alminerech.com](http://www.alminerech.com)



Karel APPEL  
*Nude (Nude Series)*, 1962  
 Oil on canvas  
 160 x 130 cm  
 63 x 51 1/8 in  
 Courtesy of the Estate and Almine Rech  
 © Karel Appel Foundation / ADAGP Paris 2021  
 Photo: Georges Poncet



Agustín Cárdenas  
*Un Seul Fil*, 1989  
 Burnt Wood  
 235 x 29 x 29 cm  
 92 1/2 x 11 3/8 x 11 3/8 in

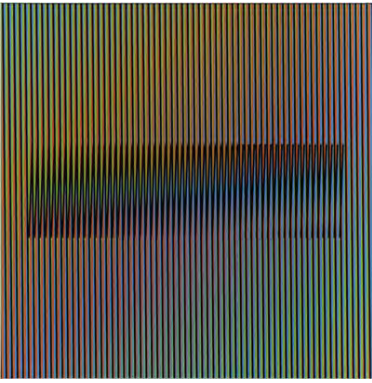
Courtesy of the Estate and Almine Rech  
 © The Estate of Agustín Cárdenas / ADAGP Paris 2021  
 Photo: Melissa Castro Duarte



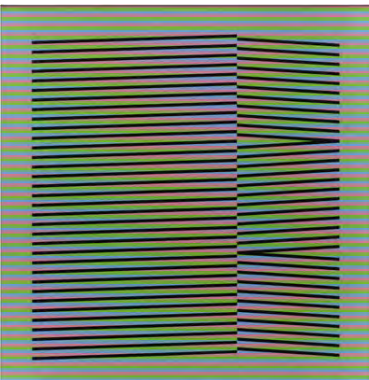
César  
*Stéphanie*, 1997  
 Welded bronze - Fondateur Bocquel  
 99 x 34 x 30 cm  
 39 x 13 3/8 x 11 3/4 in  
 AP 1/4 from an edition of 8 + 4APs  
 Courtesy Almine Rech and Fondation César  
 © SBJ / ADAGP Paris 2021  
 Photo: Rebecca Fanuele



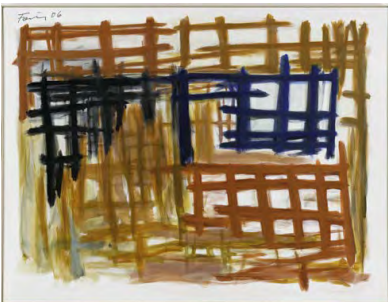
Antoni Clavé  
*Deux mains*, 1964  
 Oil on cardboard  
 105 x 75 cm - 41 3/8 x 29 1/2 in (unframed)  
 115 x 85 cm - 45.27 x 33.46 in (framed)  
 Courtesy of Almine Rech  
 © Collection privée  
 Photo: Nicolas Brasseur



Carlos Cruz-Diez  
*Induction Chromatique à double fréquence RVB 7*, 2014  
Chromography on aluminum  
91 x 91 cm  
35 7/8 x 35 7/8 in  
Courtesy of Almine Rech  
© Carlos Cruz-Diez Paris / Bridgeman Images 2021  
Photo: Nicolas Brasseur



Carlos Cruz-Diez  
*Induction Chromatique N°212*, 2016  
Airbrush acrylic paint on aluminum  
120 x 120 cm  
47 1/4 x 47 1/4 in  
Courtesy of Almine Rech  
© Carlos Cruz-Diez Paris / Bridgeman Images 2021  
Photo: Nicolas Brasseur



Günther Förg  
*Untitled*, 2006  
Acrylic on canvas  
200 x 250 cm - 78 3/4 x 98 3/8 in (unframed)  
213 x 263 cm - 83 7/8 x 103 1/2 in (framed)  
Courtesy of Almine Rech and the Estate of Günther Förg  
Photo: Nicolas Brasseur



Günther Förg  
*Untitled*, 1990  
Acrylic on wood, in artist's frame  
60 x 50 cm  
23 5/8 x 19 3/4 in  
Courtesy of Almine Rech and the Estate of Günther Förg  
Photo: Ana Drittanti



Günther Förg  
*Untitled*, 1990  
Acrylic on wood, in artist's frame  
60 x 50 cm  
23 5/8 x 19 3/4 in  
Courtesy of Almine Rech and the Estate of Günther Förg  
Photo: Ana Drittanti



Markus Lüpertz  
*Männer ohne Frauen, Parsifal*, 1994  
Encaustic and oil on canvas  
200 x 162 cm  
78 3/4 x 63 3/4 in  
Courtesy of Almine Rech  
Photo: Nicolas Brasseur



Vivian Springford  
*Untitled*, 1984  
Signed and dated on verso  
Acrylic on canvas  
76.2 x 76.5 x 2.9 cm  
30 x 30 1/8 x 1 1/8 in  
Courtesy of Almine Rech © The Vivian Springford Administration  
Photo: Nicolas Brasseur