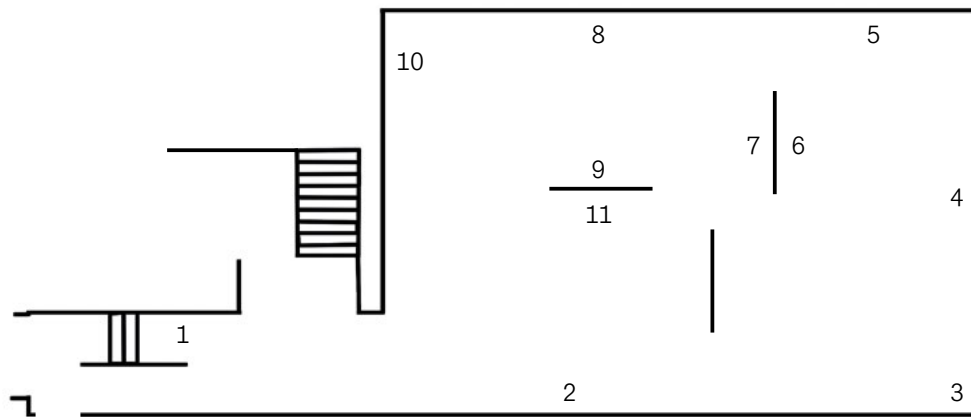


**Martin Boyce**  
**No Clouds or Streams**  
**No Information or Memory**  
**The Modern Institute, Aird's Lane**  
**17<sup>th</sup> September – 23<sup>rd</sup> October 2021**



- |    |   |    |  |   |  |
|----|---|----|--|---|--|
| 1  | <i>NCOSNIOM #2</i> , 2021<br>Steel, oiled plywood, tracing paper and ink<br>64.1 x 75.4 x 4 cm  | 2  | <i>Moon Dial</i> , 2021<br>Steel, acrylic on aluminium, painted silicone moulded vacuum cast resin, coiled telephone cable<br>221.5 x 165.8 x 15 cm        | 3 | <i>On the Wrong Side of Right</i> , 2021<br>Painted aluminium, perforated aluminium, stained julep wood, brass<br>205.5 x 108 x 91 cm                          |
| 4  | <i>Static Suspense</i> , 2021<br>Steel, acrylic on aluminium, painted silicone moulded vacuum cast resin, coiled telephone cable<br>221.5 x 165.8 x 15 cm | 5  | <i>No Information or Memory</i> , 2021<br>Stained wood, painted wood, brass<br>205.5 x 99.5 x 85 cm  | 6 | <i>NCOSNIOM #3</i> , 2021<br>Steel, oiled plywood, tracing paper and ink<br>64.1 x 75.4 x 4 cm   |
| 7  | <i>Distant Waves</i> , 2021<br>Steel, acrylic on aluminium, painted silicone moulded vacuum cast resin, coiled telephone cable<br>167 x 121 x 15 cm       | 8  | <i>No Clouds or Streams</i> , 2021<br>Steel, acrylic on aluminium, painted silicone moulded vacuum cast resin, coiled telephone cable<br>167 x 121 x 15 cm | 9 | <i>Remembered Waves (for J)</i> , 2021<br>Steel, acrylic on aluminium, painted silicone moulded vacuum cast resin, coiled telephone cable<br>167 x 121 x 15 cm |
| 10 | <i>No More Horizons</i> , 2021<br>Galvanised steel, expanded steel mesh, stained julep wood, brass<br>178.5 x 204 x 75.5 cm                               | 11 | <i>NCOSNIOM #1</i> , 2021<br>Steel, oiled plywood, tracing paper and ink<br>64.1 x 75.4 x 4 cm   |   |  |