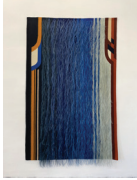


Tamaz Nutsubidze
12.09.2021 – 24.10.2021
Opening: 11.09.2021



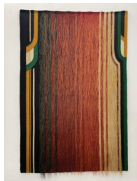
Beka Nutsubidze, Tamaz Nutsubidze
Zamtari (Winter), 1988/2021
Wool and sisal
257 x 157 cm



Tamaz Nutsubidze
Shemodgoma (Autumn), 1988
Wool and sisal
247 x 162 cm



Beka Nutsubidze, Tamaz Nutsubidze
Gazaphkhuli (Spring), 1988/2021
Wool and sisal
246 x 158 cm



Tamaz Nutsubidze
Zaphkhuli (Summer), 1988
Wool and sisal
247 x 164 cm



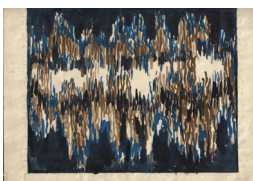
Tamaz Nutsubidze
Ghame (Night), 1978
Wool
247 x 139 cm



Tamaz Nutsubidze
Tushuri Motivebi (Tushetian Motives), 1978
Gouache on paper
14 x 18 cm



Tamaz Nutsubidze
Saghamo (Evening), 1981
Gouache on paper
28 x 38 cm



Tamaz Nutsubidze
Untitled
Gouache on paper
31 x 43 cm

Tamaz Nutsubidze
12.09.2021 – 24.10.2021
Opening: 11.09.2021



Tamaz Nutsubidze
Untitled
Gouache on paper
30 x 13 cm



Tamaz Nutsubidze
Untitled
Gouache on paper
30 x 13 cm



Tamaz Nutsubidze
Ritmuli Kompozitsia (Rhythmical Composition), 1985
Gouache on cardboard
25.5 x 38 cm



Tamaz Nutsubidze
Promenade, 1978
Gouache on cardboard
34 x 41 cm



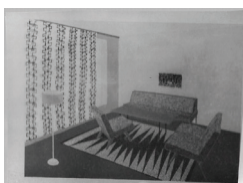
Tamaz Nutsubidze
Interior Design
Unknown Location



Tamaz Nutsubidze
Interior Design
Restaurant Dariali, 22 Shota Rustaveli Ave, Tbilisi



Tamaz Nutsubidze
Interior Design
Kafe Mkhatvris Sakhli, Artist House Cafe, 7 Rustaveli Ave, Tbilisi



Tamaz Nutsubidze
Interior Design
Unknown Location