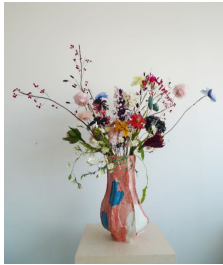


# White Columns

**Anne Chu**

October 30–December 18, 2021



**Anne Chu**

*Flower Drawing no. 1*, 2012

Ceramic with glaze, fabric, and wire

60 x 48 x 48 in.

(Inv# ANC017)



**Anne Chu**

*Putto and Horses*, 2011

Watercolor on paper

22 x 17 in.

(Inv# ANC001)



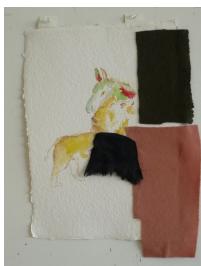
**Anne Chu**

*Rubric Study: Sling no. 2*, 2014

Leather, fabric, watercolor, and paper

19.5 x 14.75 in.

(Inv# ANC006)



**Anne Chu**

*Rubric Study: Eques no. 4*, 2014

Leather, fabric, watercolor, and paper

18.75 x 13.75 in.

(Inv# ANC005)



**Anne Chu**

*Procession (Burial)*, 2016

Porcelain, fabric, metal, and mixed media

Dimensions variable

(Inv# ANC016)



**Anne Chu**

*Burial of the Sardine, no. 7*, 2015

Watercolor on paper

21 x 18 in., 20 x 16 in.

(Inv# ANC011)



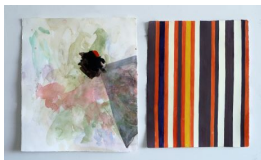
**Anne Chu**

*Pisces Underwater*, 2016

Mixed media, wood, glass, and fabric

96 x 32 x 32 in.

(Inv# ANC014)



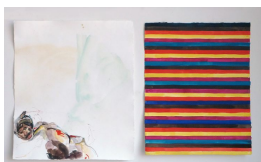
**Anne Chu**

*Burial of the Sardine, no. 3*, 2015

Watercolor on paper

21 x 18 in., 20 x 16 in.

(Inv# ANC008)



**Anne Chu**

*Burial of the Sardine, no. 5*, 2015

Watercolor on paper

21 x 18 in., 20 x 16 in.

(Inv# ANC009)



**Anne Chu**

*Burial of the Sardine, no. 8, 2015*

Watercolor on paper

21 x 18 in., 20 x 16 in.

(Inv# ANC012)



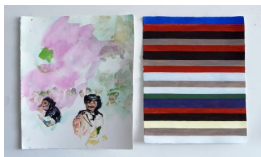
**Anne Chu**

*Underwater Rattus, 2016*

Mixed media, wood, glass, and fabric

84 x 38 x 32 in.

(Inv# ANC013)



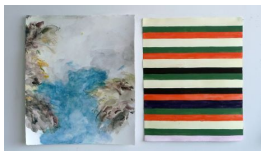
**Anne Chu**

*Burial of the Sardine, no. 6, 2015*

Watercolor on paper

21 x 18 in., 20 x 16 in.

(Inv# ANC010)



**Anne Chu**

*Burial of the Sardine, no. 2, 2015*

Watercolor on paper

21 x 18 in., 20 x 16 in.

(Inv# ANC007)



**Anne Chu**

*Rubric Study: Sling, 2014*

Leather, fabric, watercolor, and paper

17.25 x 12.375 in.

(Inv# ANC003)