



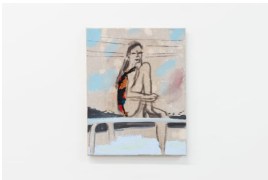
## **GOLDFINCH**

319 N. Albany Avenue Chicago, Illinois (IL) 60612  
708-714-0937  
claudine@goldfinch-gallery.com  
<http://www.goldfinch-gallery.com>

### **MARI EASTMAN: NIGHT LIFE -- EXHIBITION CHECKLIST**

All images credited as follows:  
Courtesy of Goldfinch, Chicago. Photo: Ryan Edmund

---



#### **Mari Eastman**

*Untitled (Sanded Painting)*

Oil on canvas

14 x 11 in (35.56 x 27.94 cm)

2021

---



#### **Mari Eastman**

*Untitled (Before Cell Phones, L.A.)*

Vinyl-based paint on oil ground on linen

12 x 9 in (30.48 x 22.86 cm)

2021

---



#### **Mari Eastman**

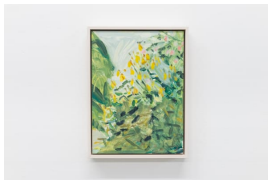
*Untitled (yellow and pink flowers in black vase)*

Oil on yupo paper

12 x 9 in (30.48 x 22.86 cm)

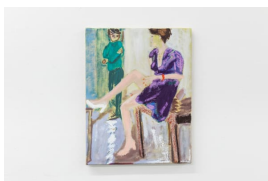
2021

---



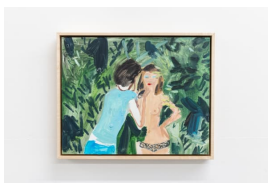
**Mari Eastman**  
*Black-eyed Susans in the Backyard*  
oil on panel  
11.5 x 9 in (29.21 x 22.86 cm)  
2021

---



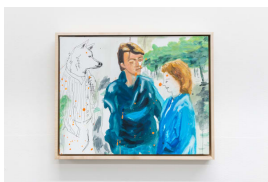
**Mari Eastman**  
*Untitled (Purple Dress)*  
Oil and pen on linen  
14 x 11 in (35.56 x 27.94 cm)  
2021

---



**Mari Eastman**  
*Make Up Artist*  
Oil on yupo paper  
11 x 14 in (27.94 x 35.56 cm)  
2021

---



**Mari Eastman**  
*Untitled (Conversation)*  
oil on panel  
11 x 14 in (27.94 x 35.56 cm)  
2021

---



**Mari Eastman**  
*Untitled (Moon with Trees, King's Blue)*  
Oil on linen  
20 x 16 in (50.8 x 40.64 cm)  
2021

---



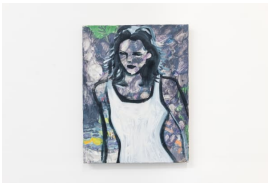
**Mari Eastman**  
*New York City, 1980s, dusk*  
Oil on yupo  
12 x 9 in (30.48 x 22.86 cm)  
2021

---



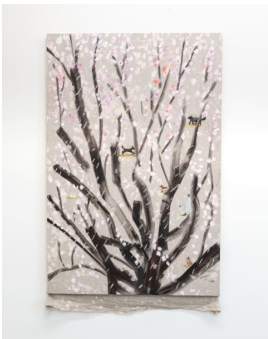
**Mari Eastman**  
*Untitled (red fox in grass)*  
oil on panel  
8 x 10 in (20.32 x 25.4 cm)  
2021

---



**Mari Eastman**  
*Untitled (White Bathing Suit)*  
18 x 14 in (45.72 x 35.56 cm)  
2021

---



**Mari Eastman**  
*Dog Park (Walter, Jackson, Penny and Baxter)*  
Vinyl-based paint and oil on linen  
60 x 40 in (152.4 x 101.6 cm)  
2019 to 2021

---



**Mari Eastman**  
*Untitled (Black Moth)*  
Acrylic and oil on linen  
20 x 16 in (50.8 x 40.64 cm)  
2017 to 2021

---



**Mari Eastman**

*Readers*

Oil, cardboard, pastel, colored pencil on canvas

60 x 40 in (152.4 x 101.6 cm)

2021

---



**Mari Eastman**

*Women in White*

Oil on yupo paper

14 x 11 in (35.56 x 27.94 cm)

2020

---



**Mari Eastman**

*Fruit bat mother and child*

oil on panel

14 x 11 in (35.56 x 27.94 cm)

2021

---



**Mari Eastman**

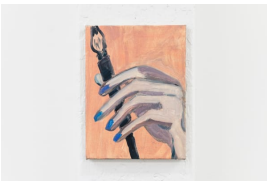
*Soon-yi and Moses*

Oil on yupo paper

12 x 9 in (30.48 x 22.86 cm)

2021

---



**Mari Eastman**

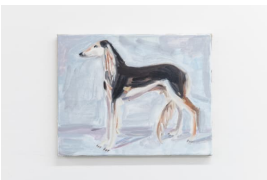
*Untitled (Hand with Brush)*

Oil on linen

12 x 9 in (30.48 x 22.86 cm)

2021

---



**Mari Eastman**

*Untitled (Saluki)*

11 x 14 in (27.94 x 35.56 cm)

2021

---



**Mari Eastman**

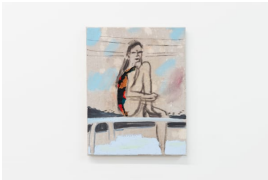
*Untitled (Kitty Cat Painter)*

Charcoal, cardboard, vinyl-based paint and oil on linen

20 x 16 in (50.8 x 40.64 cm)

2021

---



**Mari Eastman**

*Red and Black Bathing Suit*

Oil and rayon on linen

14 x 11 in (35.56 x 27.94 cm)

2021

---



**Mari Eastman**

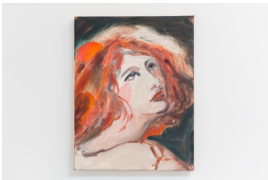
*Squash*

pastel on pastel carte

9.5 x 12 in (24.13 x 30.48 cm)

2020

---



**Mari Eastman**

*Untitled (Red-haired Beauty)*

Oil on canvas

14 x 11 in (35.56 x 27.94 cm)

2021

---