

Les Couleurs en Jeu

Attempts and Colours by Julio Le Parc

an exhibition at Le Forum, Ginza Maison Hermès

OUR GESTURES DEFINE US AND SHOW WHO WE ARE

PRESS RELEASE – AUGUST.12, 2021

The Fondation d'entreprise Hermès is pleased to present *Les Couleurs en Jeu* (Attempts and Colours), the first solo exhibition in Japan of the work of Julio Le Parc.

Artist Julio Le Parc was born in Argentina in 1928, and has lived and worked in France since moving there in 1958. Greatly inspired by Piet Mondrian (1872-1944) and Russian Constructivism, Le Parc began to make geometric abstractions. In the 1960s, Victor Vasarely's (1906-1997) work struck a chord with Le Parc, and he became a founding member of Groupe de Recherche d'Art Visuel (GRAV) along with Horacio Garcia-Rossi, François Morellet, Francisco Sabrino, Joël Stein, and Yvaral, and pursued his work both as part of the collective and independently. The GRAV group pursued an experiential approach to art, subverting conventional frameworks and viewing practices through op art (optical art, employing optical illusions to create impressions of movement in painting), kinetic art (moving sculpture), and activities that encouraged audience participation at public sites. Amid the revolutionary fervor of the time, Le Parc was also strongly engaged in political action, questioning the traditional role of art as appreciated by a limited, elite viewership and consumed in a passive manner, and giving shape to his commitment to open, egalitarian participation in art through visual playfulness and game-like elements.

This exhibition focuses on Le Parc's use of colours, which make a vivid and lingering impact and have been a consistent theme in his work for more than 70 years.

Early in his career, Le Parc began working only with black, white and gradations thereof, but around 1959 he embarked on a series of works using an array of 14 colours he had conceived. In this group of works, Le Parc does not approach colour analytically as in chromatic theory. By treating colours in the manner of geometric forms or metaphors of variability, he aims to produce visual vibrations between colors and other effects that actively and physically appeal to the viewer. By limiting his use of colour, Le Parc was able to more clearly express variations, rooted in rotation, repetition, and division. He carried out these experiments in parallel with his creation of mobiles, with motifs of light and movement.

This exhibition is a wide-ranging survey of Le Parc's art, from the above-described early monochromatic paintings and drawings exploring color, to well-known works such as *La Longue Marche* (The Long March) and *Lames Réfléchissantes* (Reflected Blades), and new pieces from the series of mobile works he has been actively creating since the GRAV era. The works are installed so as to utilize the entirety of the Maison Hermès building, which marks its 20th anniversary this year, including the glass block façade, window displays, and elevators, encouraging the open-ended encounters between viewer and artwork that Le Parc seeks to facilitate.

We invite you to step into the world of Le Parc, who is still working energetically at the age of 92, and see where his schemes, strategies, chromatic explorations and deployment of playful elements will transport you.

Julio Le Parc

Born in Argentina, based in Paris
since 1928

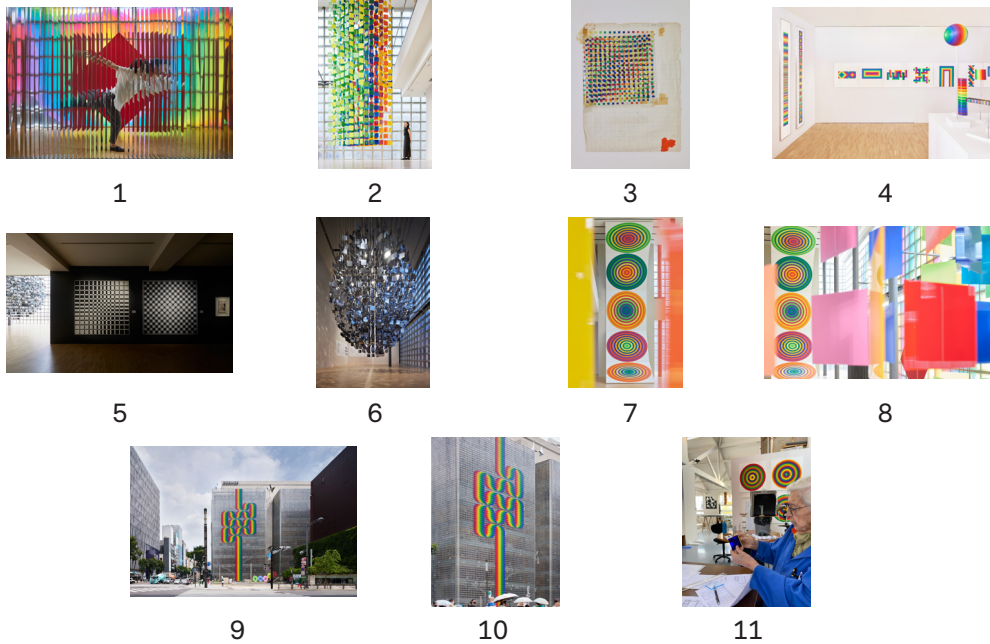
Born in Argentina in 1928. In 1958, Le Parc moved to France, where he continues to live and work. In 1960, he and a group of other artists founded Groupe de Recherche d'Art Visuel (GRAV) in Paris. In 1966, Le Parc was awarded the Grand Prize for painting at the 33rd Venice Biennale. Recent exhibitions such as Suprasensorial: Experiments in Light, Color, and Space (MOCA, Los Angeles, 2010), a reevaluation of the Light and Space movement, and Dynamo, Un siècle de lumière et de mouvement dans l'art 1913-2013 (Grand Palais, Paris, 2013), have led to a reappraisal of Le Parc's work. He has held solo exhibitions at Palais de Tokyo (Paris, 2013), Casa Davos (Rio de Janeiro, 2013), Serpentine Sackler Gallery (London, 2014), Perez Art Museum Miami (2016), and the Met Breuer (New York, 2018), among others.

Selected Solo Exhibitions

- 2020 Mobile installation "KUBOA," TABAKALERA, Sans Sebastian, Spain
- 2019 National Tribute of Argentina to Julio Le Parc, Buenos Aires, Argentina
 - Obelisk intervention (projection mapping)
 - Mobile installation "Mobile Rombo Colón," Teatro Colón
 - "Julio Le Parc Transición Buenos Aires-París (1955-1959)," Museo Nacional de Bellas Artes
 - "Julio Le Parc. Un visionario," CCK (Centro Cultural Kirchner)
- 2018 "Julio Le Parc 1959," The Met Breuer, New York, USA
- 2017 "Julio Le Parc, da Forma à Ação," Instituto Tomie Ohtake, Sao Paulo, Brazil
- 2016 "Julio Le Parc," Galerie Perrotin, New York, USA
 - "Julio Le Parc: Form into Action," Pérez Art Museum Miami, USA
- 2014 "Julio Le Parc," Serpentine Sackler Gallery, London, UK
- 2013 "Le Parc Lumière," Casa Daros, Rio de Janeiro, Brazil
 - "Julio Le Parc," Palais de Tokyo, Paris, France

Selected Group Exhibitions

- 2020 Light art festival "Llum BCN," Barcelona, Spain
- 2016 "Eye Attack - Op Art And Kinetic Art 1950-1970," Louisiana Museum of Modern Art, Humlebæk, Denmark
- 2014 "Phares," Centre Pompidou Metz, France
- 2013 "DYNAMO - Un siècle de lumière et de mouvement dans l'art 1913-2013," Grand Palais, Paris, France
- 2012 "ARTE PROGRAMMATA E CINETICA—da Munari a Biasi a Colombo e...," GNAM National Museum of Contemporary Art of Rome, Rome, Italy
- 2010 "Suprasensorial: Experiments in Light, Color and Space," MOCA the Museum of Contemporary Art, Los Angeles, USA; Hirshhorn Museum and Sculpture Garden, Washington D.C., USA, 2012



- 1 *Cloison à lames réfléchissantes*
Reflected Blades | 1966-2005 | Steel, 49 blades | 277 x 252 x 80 cm
反射ブレード(刃板) | 1966-2005 | スチール、49刃板、カンヴァスにアクリル | 277 x 252 x 80 cm
- 2 *Mobile 14 Couleurs*
モバイル 14色 | 2021 | 1456 pieces of plexiglass, coated steel wire, metal | 578 x 173 x 151 cm (各15 x 15cm)
Mobile 14 couleurs | 2021 | 1456枚のプレキシガラス、塗装スチールワイヤー、金属 | 578 x 173 x 151 cm (15 x 15cm each)
- 3 *Projet Couleur n°14*
Colour Project no.4 | 1959 | Gouache on paper, rhodoid (non-flammable celluloid) | 22 x 17 cm
カラープロジェクト no.4 | 1959 | 紙とロドイドにグワッシュ | 22 x 17 cm
- 6 *Mobile*
Mobile | 2021 | 3360 pieces of stainless steel, steel wire, metal | 532 x 375 x 375 cm (15 x 15cm each)
モバイル | 2021 | 3360枚のステンレススチール、スチールワイヤー、金属 | 532 x 375 x 375 cm (各15 x 15cm)
- 4-5 Installation view / 展示風景
7-8 Installation view / 展示風景
- 9-10 Installation view of Facade intervention *La Longue Marche*
Installation view of facade intervention *The Longue Walk* | 2021
1421 pieces of colour printed PVC sheets | Approx. 287m²
《ロング・ウォーク》ファサード展示風景 | 1974-2021 | 1421枚の着色したポリ塩化ビニールシート | 約287m²
- 1-10 Photo credit: ©Nacása & Partners Inc. / Courtesy of Fondation d'entreprise Hermès

11 Artist in the Atelier (c) Yamil Le Parc

本展覧会の写真データをご希望の方は、ウェブサイトからダウンロードしてご利用いただけます。
下記URLにアクセスし、ID、Passwordをご入力ください。

Images may be downloaded from the following website. Please access the URL, and enter the ID and password.

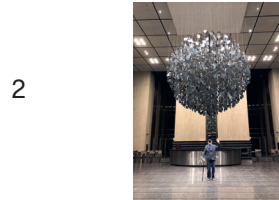
URL : <http://reservation.maisonhermes.jp/press/login.html> | ID : forum | Password : LeParc2



Étude pour la Longue Marche



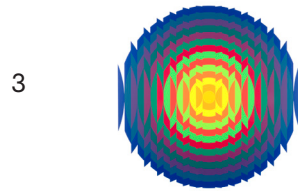
ロング・ウォークのためのエチュード | 1974 | 29 x 117 cm | 木にアクリル
Etude for the Long Walk | 1974 | 29 x 117 cm | Acrylic on wood



Sphère acier

Exhibition view, Banco Galicia, Buenos Aires, 2018

鋼球 | 2001-2018 | 直径450cm | スチール、木、金属、ナイロン
Steel Sphere | 2001-2018 | Ø 450 cm | Steel, wood, metal, nylon



Série 14-14 Permuté

シリーズ 14-14 置換 | 1970-2020 | 200 × 200 cm | カンヴァスにアクリル
Series 14-14 Permuted | 1970-2020 | 200 × 200 cm | Acrylic on canvas



Série 47 de n°1 au 14

シリーズ47 No.1-14 | 1970 | 30 x 225cm | 厚紙にコラージュ
Series 47 from No.1 to No.14 | 1970 | 30 x 225cm | Collage on thick paper



Cloison à lames réfléchissantes, 128 lames

Exhibition view, Casa Naranja Córdoba, Argentina, 2018

反射ブレード(刃板)による仕切り壁 | 1966-2005
220 x 490 x 170 cm | スチール、128刃板、カンヴァスにアクリル
Partition with reflected blades | 1966-2005
220 x 490 x 170 cm | Steel, 128 blades, acrylic on canvas



Segmentos de Circulos

円の切片 | 1958 | 49.2 x 30.7cm | 厚紙に黒インク、グアッシュ
Segments of Circles | 1958 | 49.2 x 30.7cm | Black ink, gouache on thick paper



GRAV, Une journée dans la rue, Paris, 1966

GRAV, 街の一日、パリ | 1966
GRAV, A day in the street, Paris | 1966

本展覧会の写真データをご希望の方は、ウェブサイトからダウンロードしてご利用いただけます。

下記URLにアクセスし、ID、Passwordをご入力ください。

Images may be downloaded from the following website. Please access the URL, and enter the ID and password.

URL : <http://reservation.maisonhermes.jp/press/login.html> | ID : forum | Password : LeParc



Julio Le Parc

Les Couleurs en Jeu

Attempts and Colours by Julio Le Parc

August 13th (Fri.) - November 30th (Tue.), 2021

[Facade intervention] July 29th (Thu.) - mid-October, 2021

Opening hours 11:00-19:00 (Last entry 18:30)

Open daily

*The gallery's opening hours basically conforms to the Ginza Maison Hermès' business hours. Please check the [website](#) for updated information.

Free admission

Venue Ginza Maison Hermès Le Forum
(8F/9F, 5-4-1, Ginza, Chuo-ku, Tokyo)

Organized by the Fondation d'entreprise Hermès

Under the auspices of

Embassy of France/Institut français du Japon

Embassy of the Argentine Republic

Press Contacts

Hermès Japon Co., Ltd.

Communication

TEL: 03-3569-3640

Rie Yoshimine: r-yoshimine@hermes.co.jp

Mana Ueda: m-ueda2@hermes.co.jp

FONDATIONDENTREPRISEHERMES.ORG

