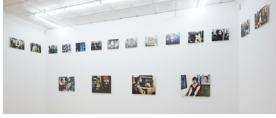


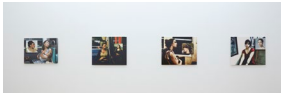
Chris Marker:100

Checklist



PASSENGERS, 2009-2011

14 color photographs mounted on white Sintra
Dimensions variable
Editions of 3



PASSENGERS

Subway Quartet, 2011

4 color photographs mounted on white Sintra
25 x 31 1/2 inches (63.5 x 80.0 cm), each
Editions of 3



Beast of, from *Staring Back*, 1950-1961

11 Black and white photographs mounted on aluminum
Dimensions variable
Editions of 3



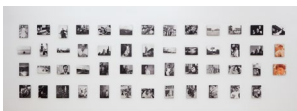
They Stare and I Stare 2, from *Staring Back*, ca. 1950-1970

Dimensions variable
18 black and white photographs mounted on aluminum
Editions of 3



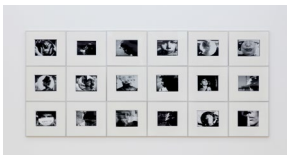
I Stare 1, from *Staring Back*, ca. 1950 - 2004

20 black and white photographs mounted on aluminum
Dimensions variable
Editions of 3



Koreans, 1957

51 black and white photographs mounted on black Sintra
dimensions variable
Editions of 3 (full set also available)



Silent Movie, 1995

Set of 18 framed black and white photographs
image size: 7 x 9 1/4 inches (17.8 x 23.5 cm)
frame size: 14 1/4 x 16 1/4 inches (36.2 x 41.3 cm)
Edition of 3

PETER BLUM GALLERY



"Quelle heure est-elle?", 2004 - 2008

36 black and white photographs mounted on black Sintra
dimensions variable

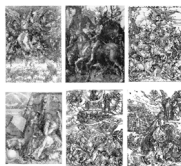
Editions of 3



Crush-Art, 2003-2008

Set of 16 black and white photographs mounted on black Sintra
15 3/4 x 15 3/4 inches (40 x 40 cm) each

Edition of 3



After Dürer, 2005-2007

Set of 6 photogravures

image size: 12 1/2 x 9 7/8 inches (31.8 x 25.1 cm)

paper size: 18 x 14 inches (45.7 x 35.6 cm)

Edition of 15



Untitled (from the Hollow Men), 2005

Photogravure

image size: 14 x 22 inches (35.6 x 55.9 cm)

paper size: 21 x 28 inches (53.3 x 71.1 cm)

Edition of 15

Checklist for Contemporary Art Library

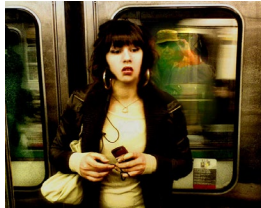
Selections from *PASSENGERS*



PASSENGERS
Untitled # 188, 2008-2010
Color photograph mounted on white Sintra
13 1/4 x 16 1/2 inches (33.7 x 41.9 cm)



PASSENGERS
Untitled # 128, 2008-2010
Color photograph mounted on white Sintra
13 1/4 x 16 1/2 inches (33.7 x 41.9 cm)



PASSENGERS
Untitled # 104, 2008-2010
Color photograph mounted on white Sintra
13 1/4 x 16 3/8 inches (33.7 x 41.6 cm)

Subway Quartet – from
PASSENGERS



PASSENGERS
Untitled # 200, 2008-2010
Color photograph mounted on white Sintra
22 3/4 x 31 1/2 inches (57.8 x 80.0 cm)



PASSENGERS
Untitled # 201, 2008-2010
Color photograph mounted on white Sintra
25 x 31 1/2 inches (63.5 x 80.0 cm)



PASSENGERS
Untitled # 202, 2008-2010
Color photograph mounted on white Sintra
24 3/4 x 31 1/2 inches (62.9 x 80 cm)

PETER BLUM GALLERY



PASSENGERS

Untitled # 203, 2008-2010

Color photograph mounted on white Sintra
25 x 31 1/2 inches (63.5 x 80.0 cm)

Selections from *Beast of*, from *Staring Back*



Unknown Zoo, year unknown

Black and white photograph mounted on aluminum
9 1/2 x 13 7/8 inches (24.1 x 35.2 cm)



Untitled (Rome, 1955), 1955

Black and white photograph mounted on aluminum
21 3/4 x 14 1/2 inches (55.3 x 36.8 cm)



Regent's Park Zoo 1, year unknown

Black and white photograph mounted on aluminum
8 1/8 x 13 7/8 inches (20.6 x 35.2 cm)

Selections from *They Stare* and *I Stare 2*, from *Staring Back*,



I Stare 2

Andrei Tarkovsky, year unknown

Black and white photograph mounted on aluminum
10 7/8 x 13 7/8 inches (27.62 x 35.24 cm)

I Stare 2

Salvador Dali, year unknown

Black and white photograph mounted on aluminum
14 x 9 3/4 inches (35.56 x 24.77 cm)



I Stare 2

Christine Aya, year unknown

Black and white photograph mounted on aluminum
9 x 13 7/8 inches (22.9 x 35.2 cm)



I Stare 2

Simone Signoret, year unknown

Black and white photograph mounted on aluminum
13 7/8 x 9 3/4 inches (35.2 x 24.8 cm)



I Stare 2

Cuban Escort Girl (Havana, 1980), 1980

Black and white photograph mounted on aluminum
13 7/8 x 10 5/8 inches (35.24 x 26.99 cm)



I Stare 2

Ligia Branice, year unknown

Black and white photograph mounted on aluminum
9 7/8 x 13 7/8 inches (25.1 x 35.2 cm)



I Stare 2

Kurosawa (1985), 1985

Black and white photograph mounted on aluminum
13 7/8 x 9 1/2 inches (35.24 x 24.13 cm)



Selections from *I Stare I* from *Staring Back*

PETER BLUM GALLERY



I Stare I

March 7 (Pentagon, 1967), 1967

Black and white photographs mounted on aluminum
10 3/8 x 13 7/8 inches (26.4 x 35.2 cm)



I Stare I

March 4 (Pentagon, 1967), 1967

Black and white photographs mounted on aluminum
10 x 13 7/8 inches (27.6 x 35.2 cm)



I Stare I

Gay-Lussac (Paris, May 1968), 1968

Black and white photographs mounted on aluminum
9 5/8 x 13 7/8 inches (24.5 x 35.2 cm)

Selections from *KOREANS*



KOREANS

Untitled # 20, 1957

Black and white photograph mounted on black Sintra
10 1/4 x 13 7/8 inches (26.0 x 35.2 cm)



KOREANS

Untitled # 21, 1957

Black and white photograph mounted on black Sintra
13 7/8 x 9 7/8 inches (35.2 x 25.1 cm)



KOREANS

Untitled #35, 1957

black and white photograph mounted on black Sintra
13 7/8 x 11 1/4 inches (35.2 x 28.6 cm)



KOREANS

Untitled # 38, 1957

Black and white photograph mounted on black Sintra
9 1/2 x 13 7/8 inches (24.1 x 35.2 cm)



KOREANS

Untitled #44, 1957

black and white photograph mounted on Sintra
11 3/8 x 13 7/8 inches (28.9 x 35.2 cm)

Selections from “*Quelle heure est-elle?*”



QUELLE HEURE EST-ELLE?

Untitled # 11, 2004-2008

Black and white photograph mounted on black Sintra
8 x 10 7/8 inches (20.3 x 27.6 cm)



QUELLE HEURE EST-ELLE?

Untitled # 13, 2004-2008

Black and white photograph mounted on black Sintra
7 7/8 x 10 7/8 inches (20.0 x 27.6 cm)

PETER BLUM GALLERY



QUELLE HEURE EST-ELLE?

Untitled # 32, 2004-2008

Black and white photograph mounted on black Sintra
8 1/2 x 10 7/8 inches (21.6 x 27.6 cm)

Selections from *CRUSH-ART*



CRUSH-ART

Untitled # 16, 2003-2008

15 3/4 x 15 3/4 inches (40 x 40 cm)



CRUSH-ART

Untitled # 3, 2003-2008

Black and white photograph mounted on black Sintra
15 3/4 x 15 3/4 inches (40 x 40 cm)